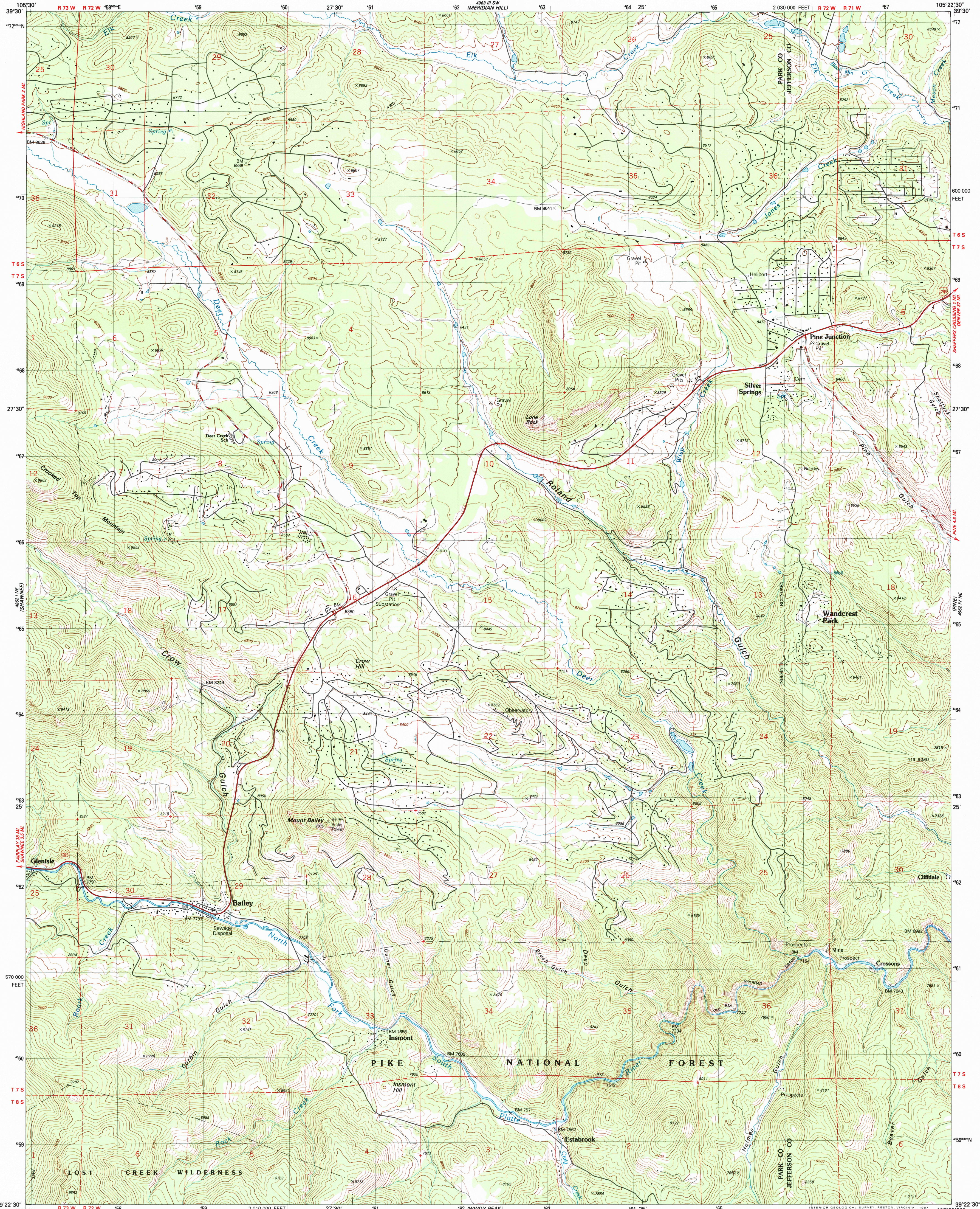


UNITED STATES  
DEPARTMENT OF THE INTERIOR  
GEOLOGICAL SURVEY

BAILEY QUADRANGLE  
COLORADO  
7.5 MINUTE SERIES (TOPOGRAPHIC)



Produced by the United States Geological Survey

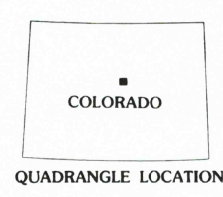
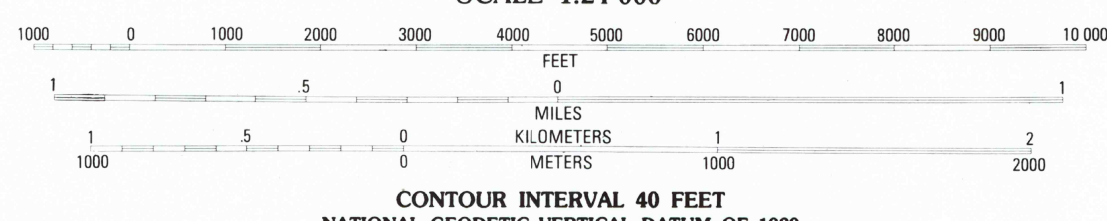
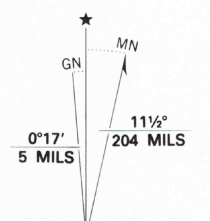
Control by USGS and NOS/NOAA

Compiled by photogrammetric methods from aerial photographs  
taken 1983. Field checked 1984. Map edited 1987

Projection and 10,000-foot grid ticks: Colorado coordinate  
system, central zone (Lambert conformal conic)  
1000-meter Universal Transverse Mercator grid, zone 13  
1927 North American Datum

To place on the predicted North American Datum 1983  
move the projection lines 5 meters north and  
49 meters east as shown by dashed corner ticks

There may be private inholdings within the boundaries of  
the National or State reservations shown on this map



ROAD CLASSIFICATION

- Primary highway, hard surface . . . . .
- Secondary highway, hard surface . . . . .
- Light-duty road, hard or improved surface . . . . .
- Unimproved road . . . . .
- Interstate Route
- U. S. Route
- State Route

BAILEY, COLO.  
39105-D4-TF-024  
1987

DMA 4962 IV NW-SERIES V877

THIS MAP COMPLIES WITH MAP ACCURACY STANDARDS  
FOR SALE BY U.S. GEOLOGICAL SURVEY, P.O. BOX 25286, DENVER, COLORADO 80225  
A FOLDER DESCRIBING TOPOGRAPHIC MAPS AND SYMBOLS IS AVAILABLE ON REQUEST

