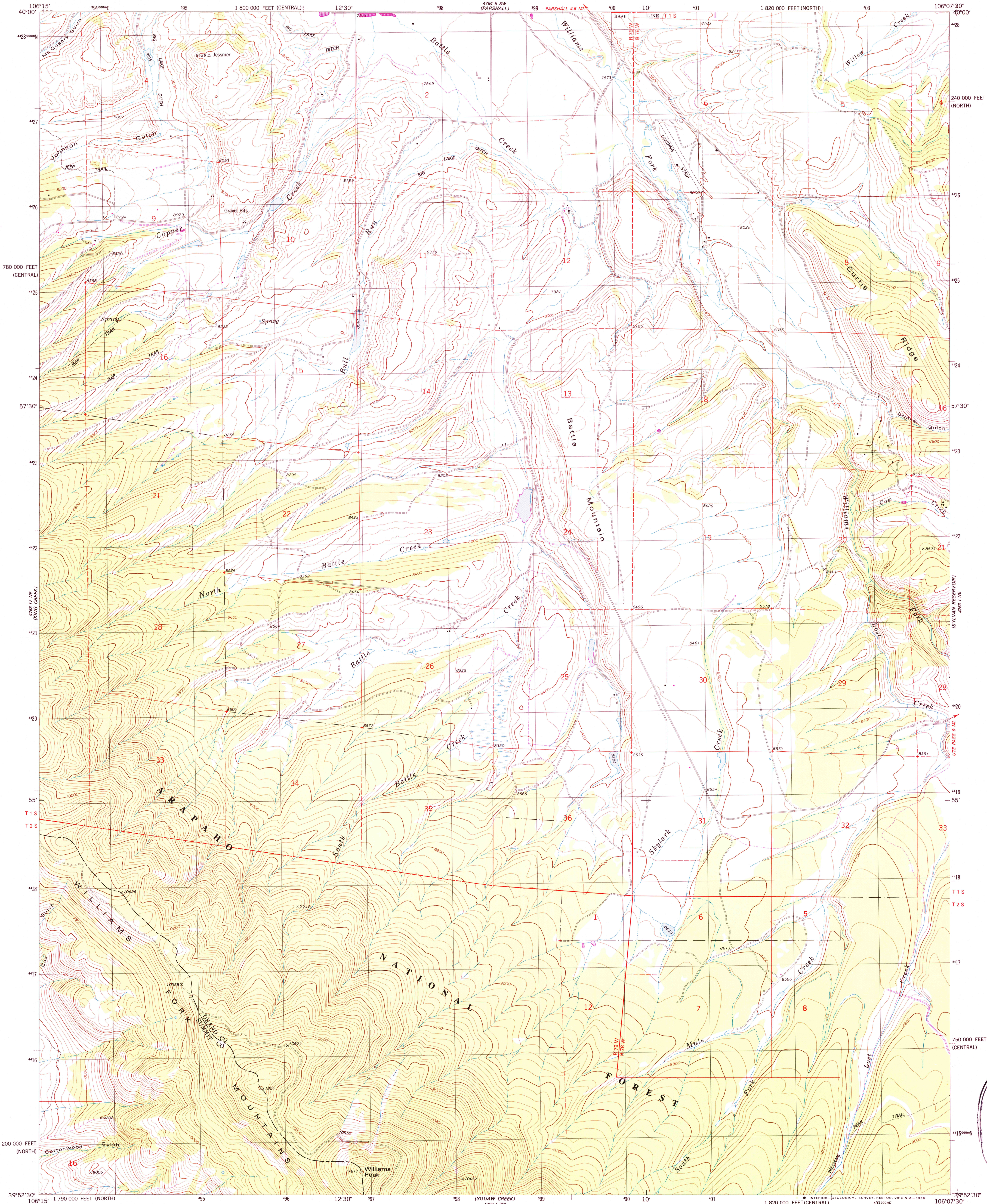
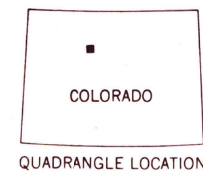
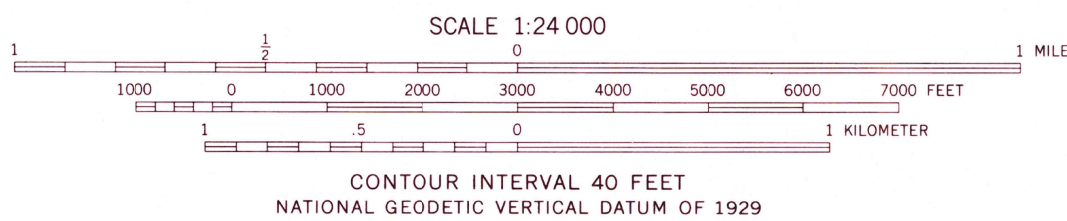
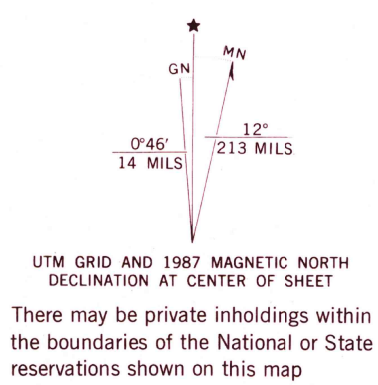


UNITED STATES
DEPARTMENT OF THE INTERIOR
GEOLOGICAL SURVEY

BATTLE MOUNTAIN QUADRANGLE
COLORADO
7.5 MINUTE SERIES (TOPOGRAPHIC)
NW/4 UTE PEAK 15' QUADRANGLE



Mapped, edited, and published by the Geological Survey
Control by USGS, NOS/NOAA, and U.S. Forest Service
Topography by photogrammetric methods from aerial photographs taken 1975. Field checked 1976. Map edited 1979
Projection: Colorado coordinate system, north zone (Lambert conformal conic)
10,000-foot grid ticks based on Colorado coordinate system, north and central zones
1000-meter Universal Transverse Mercator grid, zone 13
1927 North American Datum
Fine red dashed lines indicate selected fence lines
Where omitted, land lines have not been established or are not shown because of insufficient data
To place on the predicted North American Datum 1983 move the projection lines 6 meters north and 50 meters east as shown by dashed corner ticks



ROAD CLASSIFICATION
Primary highway, hard surface
Secondary highway, hard surface
Interstate Route
Light-duty road, hard or improved surface
Unimproved road
U.S. Route
State Route

BATTLE MOUNTAIN, COLO.
NW/4 UTE PEAK 15' QUADRANGLE
39106-H2-TF-024

Revisions shown in purple and woodland compiled from aerial photographs taken 1983 and other source data
Partial field check by U.S. Forest Service. Map edited 1987

1979
PHOTOREVISED 1987
DMA 4763 I NW—SERIES V877

