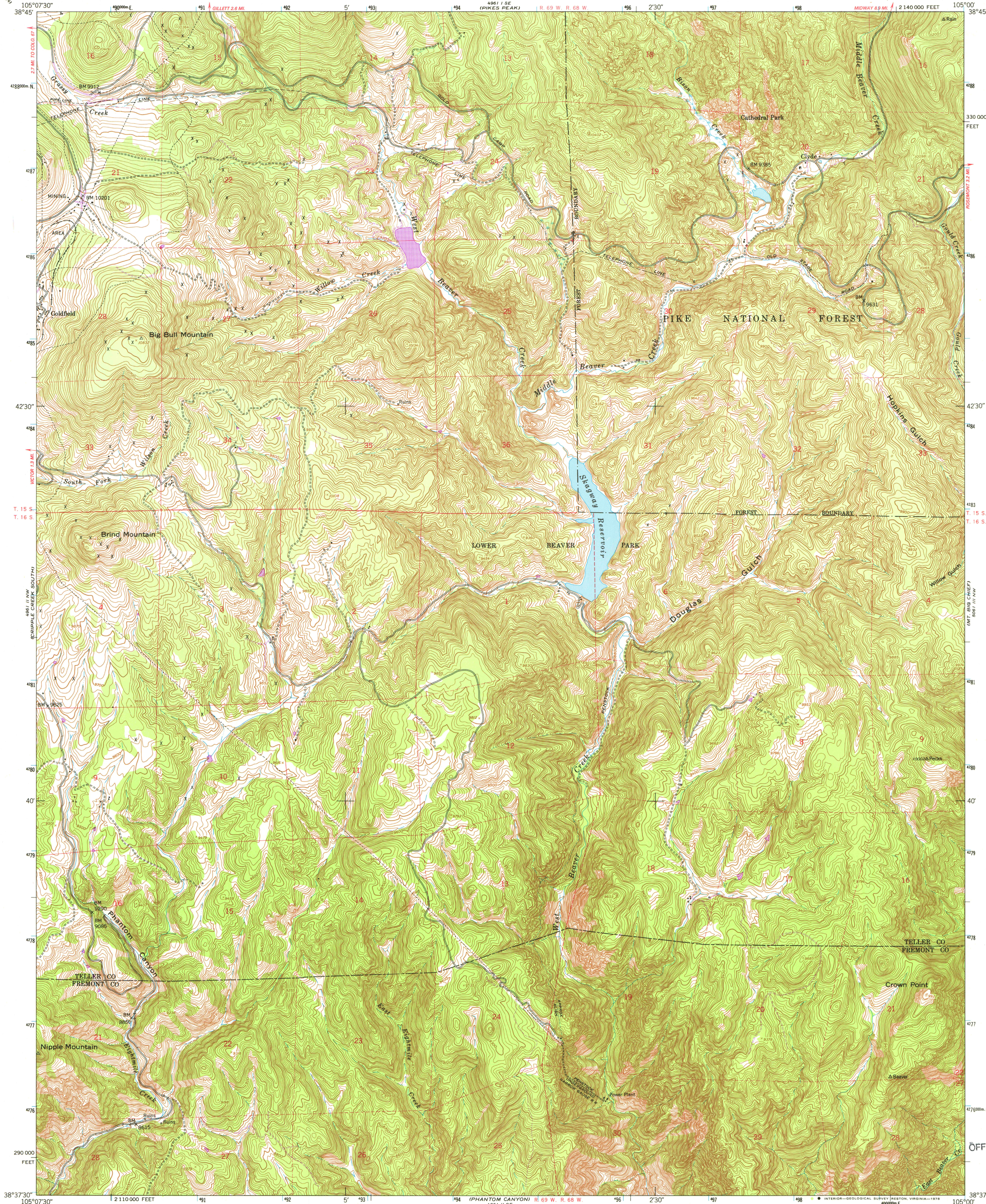


UNITED STATES
DEPARTMENT OF THE INTERIOR
GEOLOGICAL SURVEY

UNITED STATES
DEPARTMENT OF THE ARMY
CORPS OF ENGINEERS

BIG BULL MOUNTAIN QUADRANGLE
COLORADO
7.5 MINUTE SERIES (TOPOGRAPHIC)



Mapped by the Army Map Service
Published for civil use by the Geological Survey

Control by USGS, NOS/NOAA, and USCE

Topography from aerial photographs by multiplex methods

Aerial photographs taken 1950. Field check 1951

Polyconic projection. 1927 North American datum

10,000-foot grid based on Colorado coordinate system,

central zone

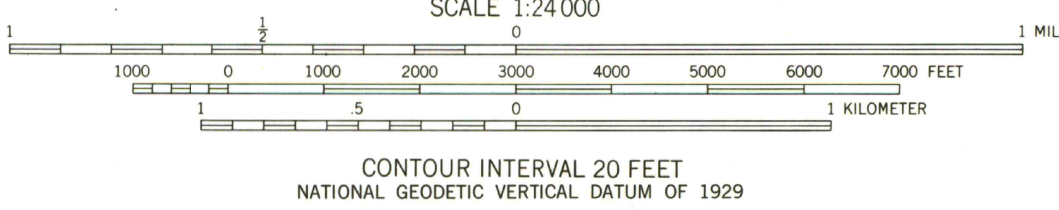
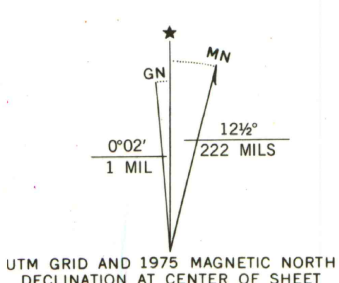
Dashed land lines indicate approximate locations

Unchecked elevations are shown in brown

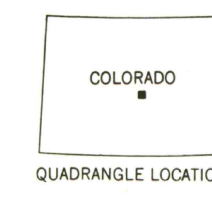
Locations of all boundaries are approximate

1000-meter Universal Transverse Mercator grid ticks,

zone 13, shown in blue



THIS MAP COMPLIES WITH NATIONAL MAP ACCURACY STANDARDS
FOR SALE BY U. S. GEOLOGICAL SURVEY, DENVER, COLORADO 80225, OR RESTON, VIRGINIA 22092
A FOLDER DESCRIBING TOPOGRAPHIC MAPS AND SYMBOLS IS AVAILABLE ON REQUEST



ROAD CLASSIFICATION			
Heavy-duty	4 LANE 16 LANE	Light-duty	
Medium-duty	4 LANE 16 LANE	Unimproved dirt	
U. S. Route		State Route	

BIG BULL MOUNTAIN, COLO.
N 3837.5—W 10500.7.5

1951
PHOTOREVISED 1975
AMS 4961 II NE—SERIES V877

OFFICE COPY

U. S. GOVERNMENT
DOCUMENTS
LIBRARY USE ONLY
ARTHUR L. LANGE
DISSEMINATION OF
TOPOGRAPHIC INFORMATION