

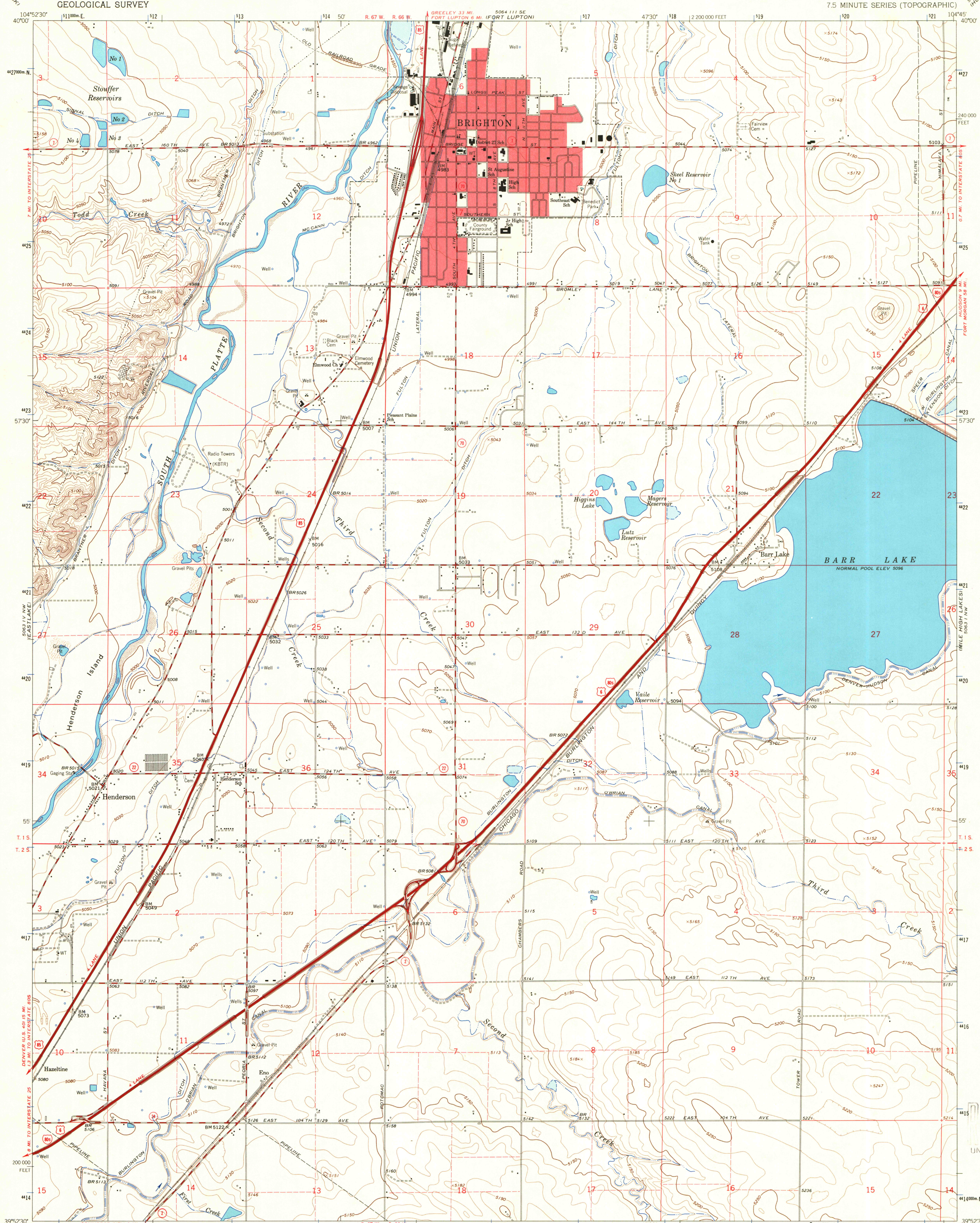
GEOLOGY

LIBRARY
DOCUMENT COLLECTION
JUL 20 1983
UNIVERSITY OF WYOMING
LARAMIE

GEOLOGICAL SURVEY OF WYOMING

BRIGHTON QUADRANGLE
COLORADO-ADAMS CO.
7.5 MINUTE SERIES (TOPOGRAPHIC)

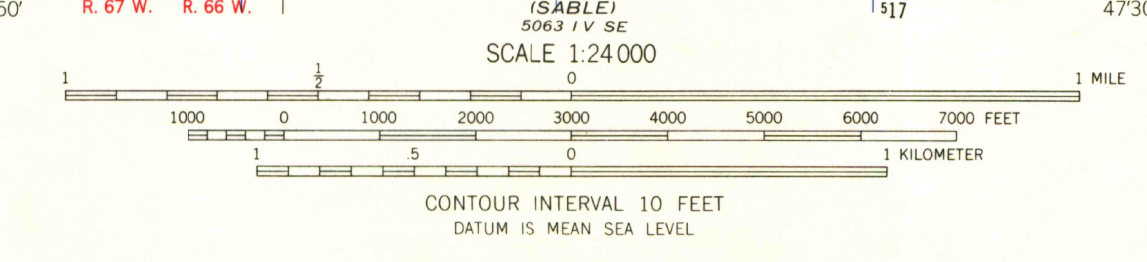
UNITED STATES
DEPARTMENT OF THE INTERIOR
GEOLOGICAL SURVEY



Mapped, edited, and published by the Geological Survey
Control by USGS and USC&GS
Topography by photogrammetric methods from aerial photographs
taken 1964. Field checked 1965. Supersedes map dated 1957
Polyconic projection. 1927 North American datum
10,000-foot grid based on Colorado coordinate system, north zone
1000-meter Universal Transverse Mercator grid ticks,
zone 13, shown in blue
Red tint indicates areas in which only landmark buildings are shown
Fine red dashed lines indicate selected fence lines
This map does not reflect ground conditions resulting
from flood of June 1965

UTM GRID AND 1965 MAGNETIC NORTH
DECLINATION AT CENTER OF SHEET

10°07' 23" N
13° 23' 11" W



ROAD CLASSIFICATION
Heavy-duty ——— Light-duty ———
Medium-duty ——— Unimproved dirt ———
Interstate Route U.S. Route State Route

QUADRANGLE LOCATION

BRIGHTON, COLO. copy 2
N3952 5-W10445/7 5
1965
AMS 5063 IV NE-SERIES V877

FOR SALE BY U.S. GEOLOGICAL SURVEY, DENVER, COLORADO 80225, OR WASHINGTON, D. C. 20242
A FOLDER DESCRIBING TOPOGRAPHIC MAPS AND SYMBOLS IS AVAILABLE ON REQUEST