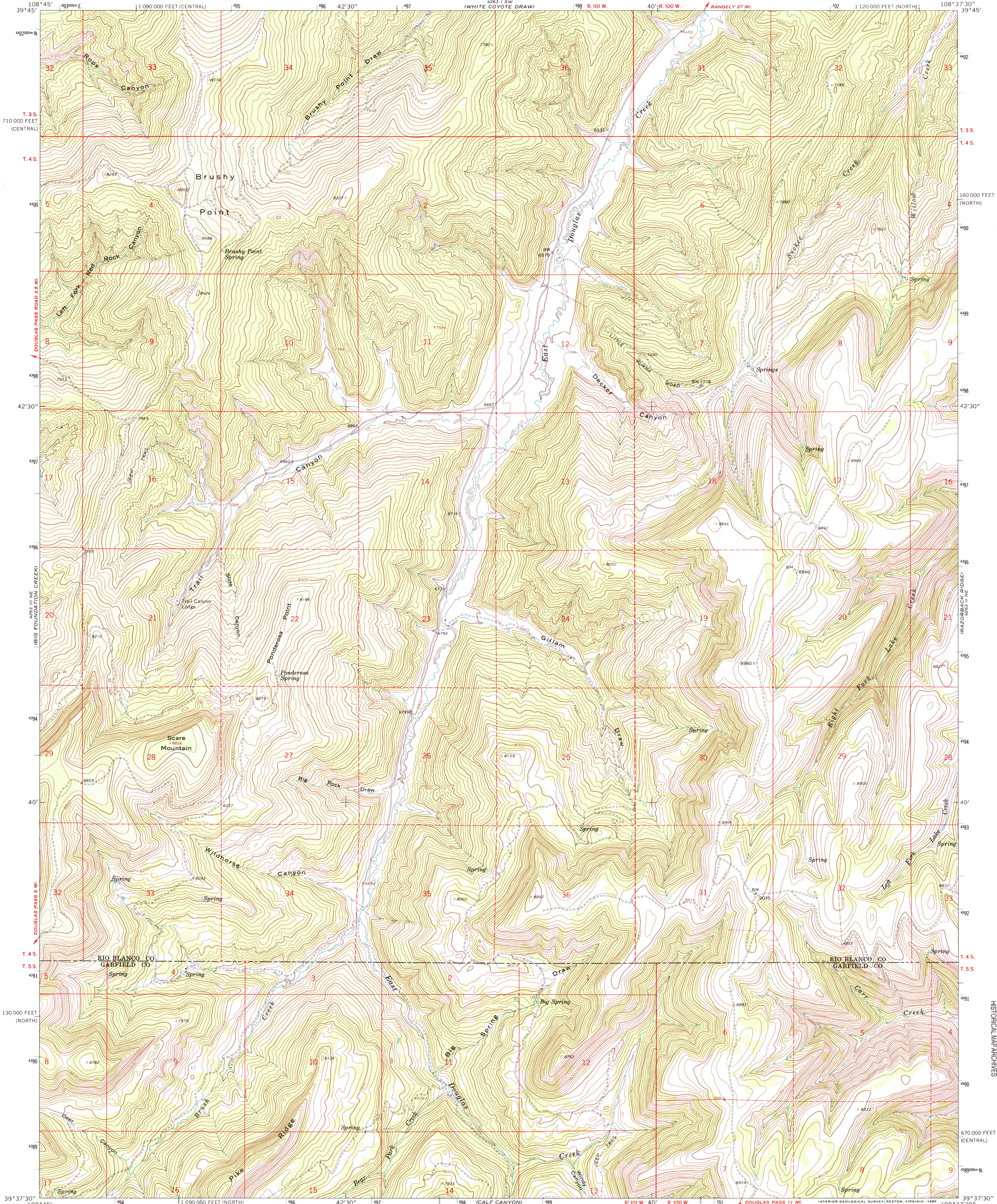


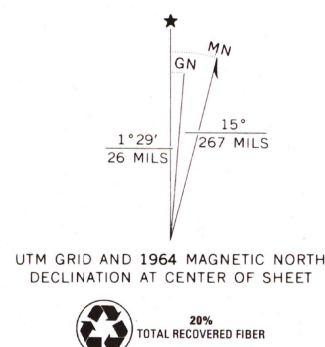


U.S. DEPARTMENT OF THE INTERIOR  
U.S. GEOLOGICAL SURVEY

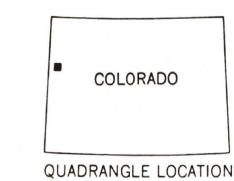
BRUSHY POINT QUADRANGLE  
COLORADO  
7.5 MINUTE SERIES (TOPOGRAPHIC)



Mapped, edited, and published by the Geological Survey  
Control by USGS and USC&GS  
Topography by photogrammetric methods from aerial  
photographs taken 1963. Field checked 1964  
Polyconic projection. 1927 North American datum  
10,000-foot grids based on Colorado coordinate system,  
north and central zones  
1000-meter Universal Transverse Mercator grid ticks,  
zone 12, shown in blue  
Fine red dashed lines indicate selected fence lines  
Map photoinspected 1973  
No major culture or drainage changes observed



SCALE 1:24,000  
CONTOUR INTERVAL 40 FEET  
DATUM IS MEAN SEA LEVEL  
THIS MAP COMPLIES WITH NATIONAL MAP ACCURACY STANDARDS  
FOR SALE BY U.S. GEOLOGICAL SURVEY, P.O. BOX 25286, DENVER, COLORADO 80225  
A FOLDER DESCRIBING TOPOGRAPHIC MAPS AND SYMBOLS IS AVAILABLE ON REQUEST



ROAD CLASSIFICATION  
Light-duty ————— Unimproved dirt - - - - -

BRUSHY POINT, COLO.  
N3937.5—W10837.5/7.5  
1964  
PHOTOINSPECTED 1973  
AMS 4263 II NW—SERIES V877

RECEIVED  
JUN 3 0 1999  
USGS NHD  
HISTORICAL MAP ARCHIVES

