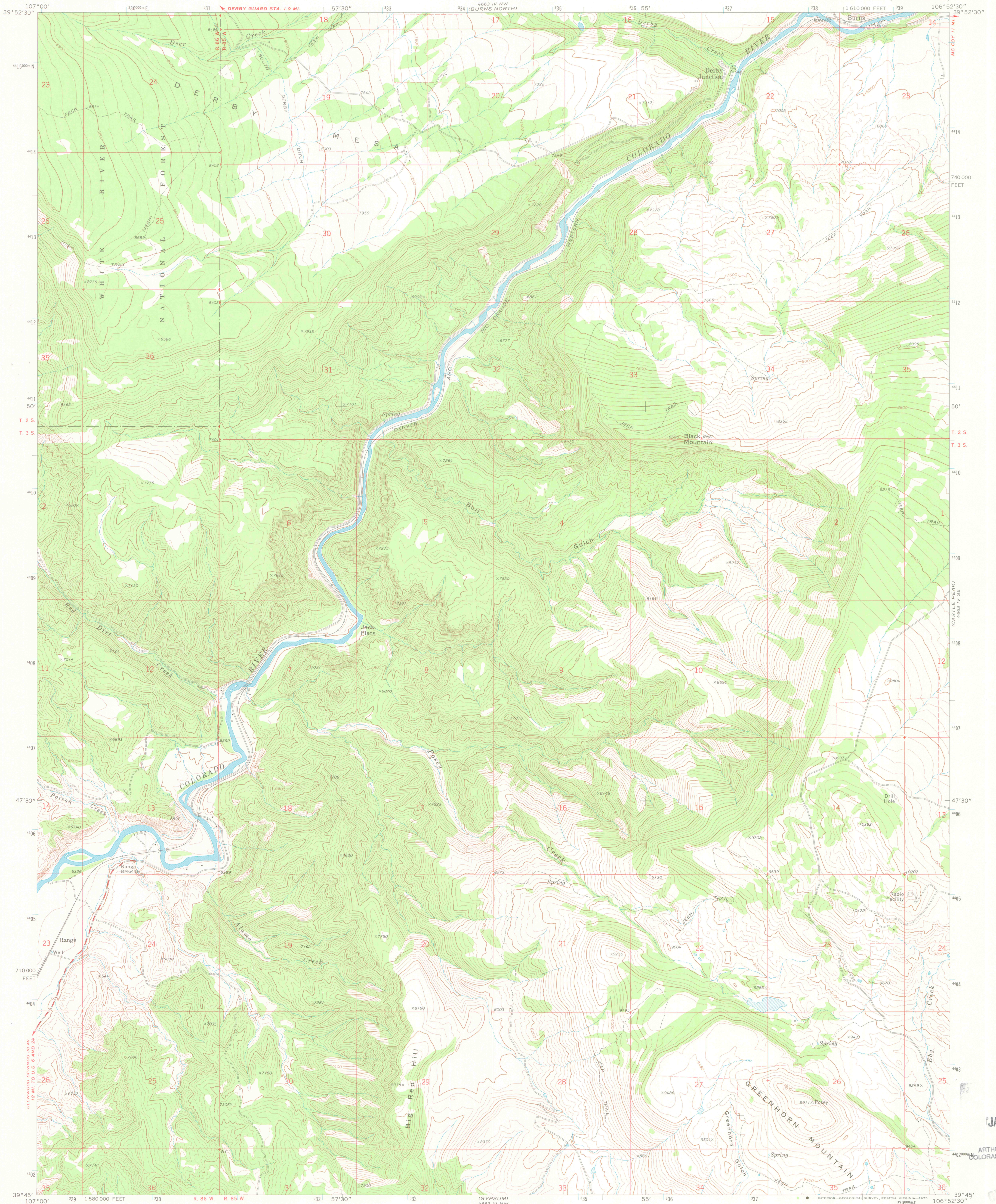
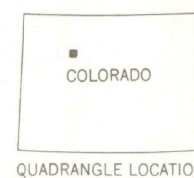
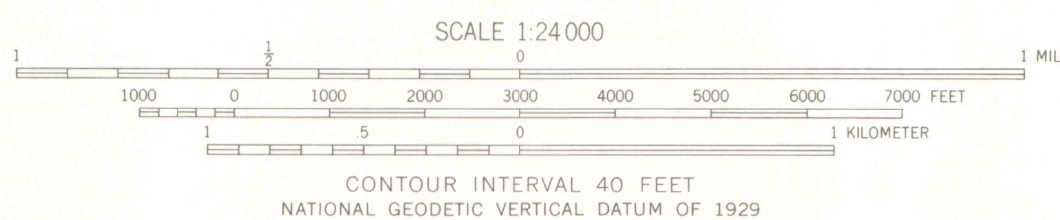
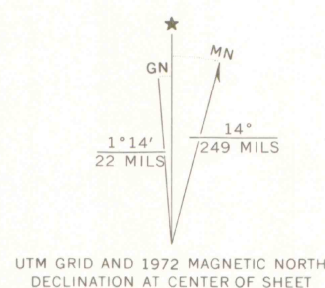


UNITED STATES
DEPARTMENT OF THE INTERIOR
GEOLOGICAL SURVEY

BURNS SOUTH QUADRANGLE
COLORADO—EAGLE CO.
7.5 MINUTE SERIES (TOPOGRAPHIC)



Mapped, edited, and published by the Geological Survey
Control by USGS and USC&GS
Topography by photogrammetric methods from aerial
photographs taken 1971. Field checked 1972
Projection and 10,000-foot grid ticks: Colorado
coordinate system; central zone (Lambert conformal conic)
1000-meter Universal Transverse Mercator grid ticks,
zone 13, shown in blue. 1927 North American datum
Fine red dashed lines indicate selected fence lines



ROAD CLASSIFICATION
Primary highway, hard surface ————
Secondary highway, hard surface ————
Unimproved road ————
Interstate Route ————
U.S. Route ————
State Route ————



BURNS SOUTH, COLO.
N3945—W10652.5/7.5

1972

AMS 4663 IV SW—SERIES V877

JAN 15 1998

MAP ROOM
ARTHUR LAKES LIBRARY
COLORADO SCHOOL OF MINES

OFFICE COPY
G 3700
S24
G4
MAP ROOM
(11647)