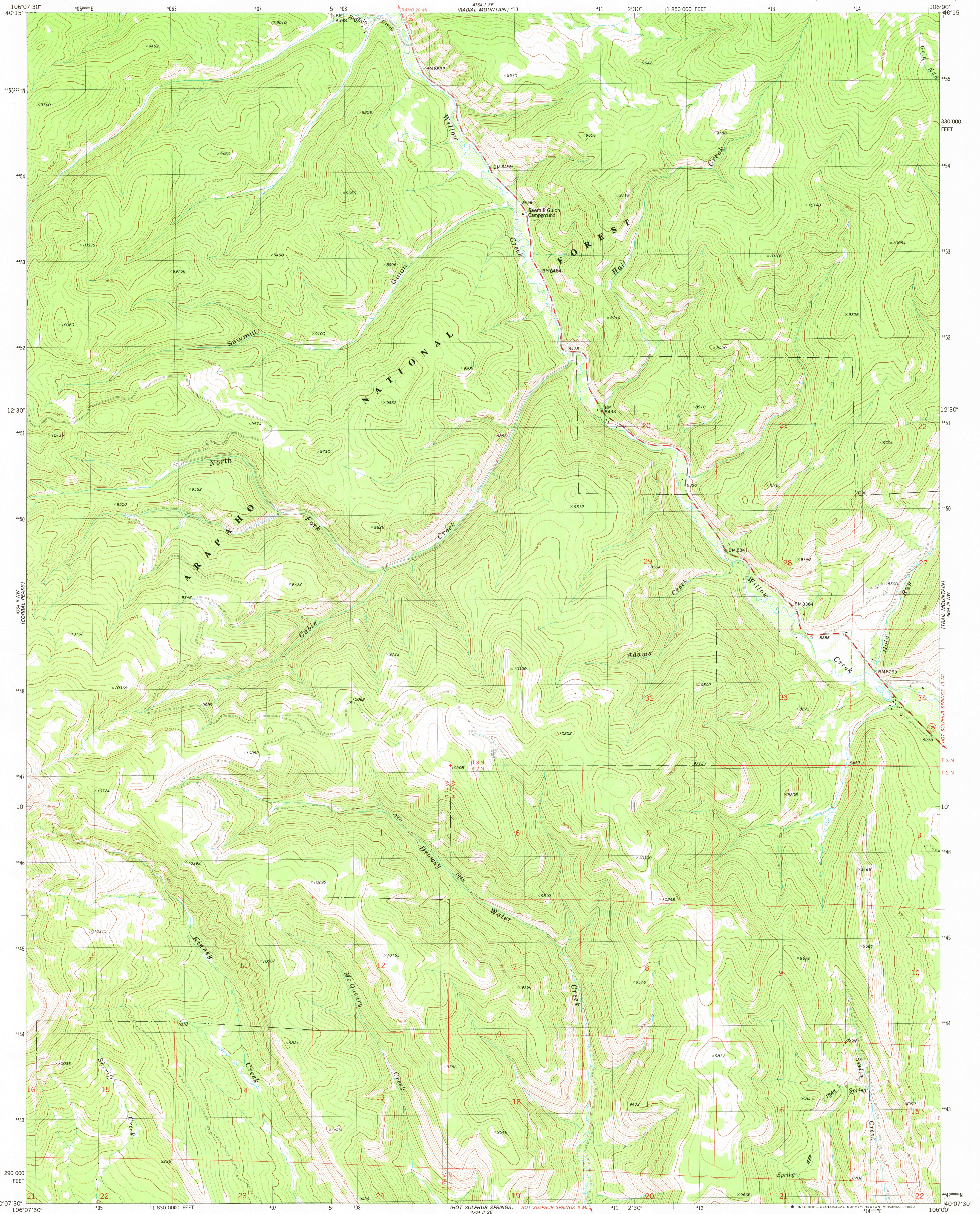


UNITED STATES  
DEPARTMENT OF THE INTERIOR  
GEOLOGICAL SURVEY

CABIN CREEK QUADRANGLE  
COLORADO—GRAND CO.  
7.5 MINUTE SERIES (TOPOGRAPHIC)  
NE/4 HOT SULPHUR SPRINGS 15' QUADRANGLE



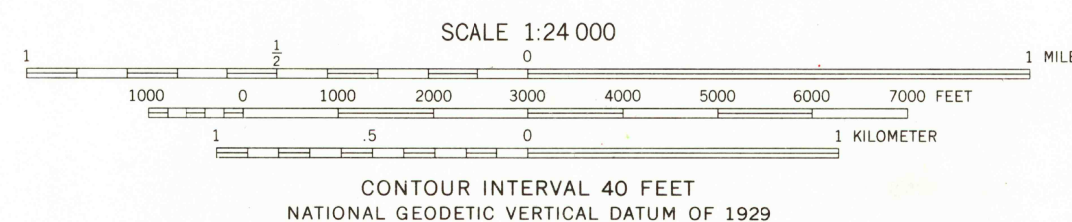
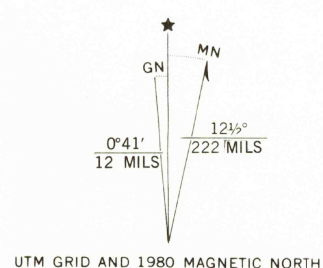
Mappe dited, and published by the Geological Survey

Control by USGS and NOS/NOAA  
Topography by photogrammetric methods from aerial photographs  
taken 1975. Field checked 1976. Map edited 1980

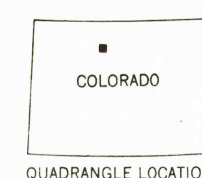
Projection and 10,000-foot grid ticks: Colorado  
coordinate system, north zone (Lambert conformal conic)  
1000-meter Universal Transverse Mercator grid, zone 13  
1927 North American datum

To place on the predicted North American Datum 1983  
move the projection lines 6 meters north and  
50 meters east as shown by dashed corner ticks

Certain land lines are omitted because of insufficient data  
There may be private inholdings within the boundaries of the  
National or State reservations shown on this map



THIS MAP COMPLIES WITH NATIONAL MAP ACCURACY STANDARDS  
FOR SALE BY U. S. GEOLOGICAL SURVEY, DENVER, COLORADO 80225, OR RESTON, VIRGINIA 22092  
A FOLDER DESCRIBING TOPOGRAPHIC MAPS AND SYMBOLS IS AVAILABLE ON REQUEST



ROAD CLASSIFICATION  
Primary highway, hard surface  
Secondary highway, hard surface  
Light-duty road, hard or improved surface  
Unimproved road  
Interstate Route  
U. S. Route  
State Route

CABIN CREEK, COLO.  
NE/4 HOT SULPHUR SPRINGS 15' QUADRANGLE  
N4007.5-W10600/7.5

1980

DMA 4764 II NE—SERIES: V877

FEB 3 1981

2000