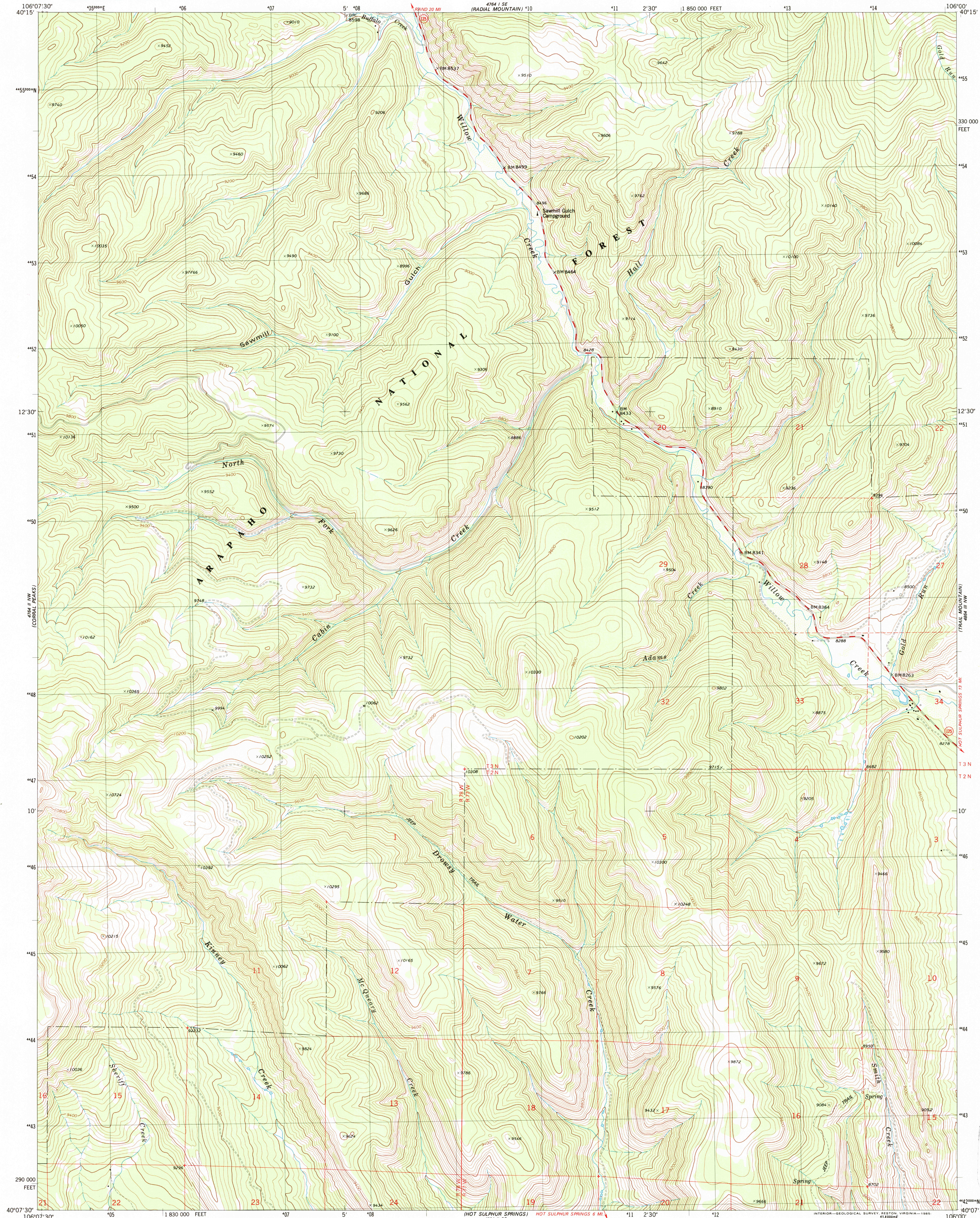
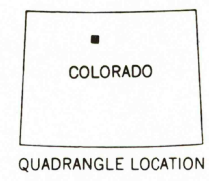
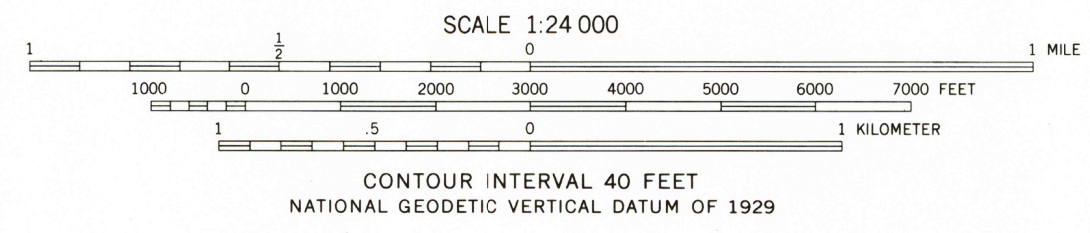
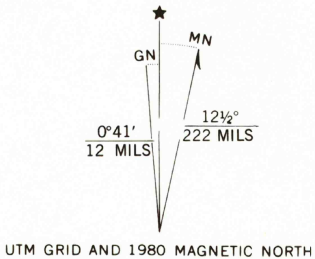


UNITED STATES
DEPARTMENT OF THE INTERIOR
GEOLOGICAL SURVEY

CABIN CREEK QUADRANGLE
COLORADO—GRAND CO.
7.5 MINUTE SERIES (TOPOGRAPHIC)
NE/4 HOT SULPHUR SPRINGS 15' QUADRANGLE



Mapped, edited, and published by the Geological Survey
Control by USGS and NOS/NOAA
Topography by photogrammetric methods from aerial photographs
taken 1975. Field checked 1976. Map edited 1980
Projection and 10,000-foot grid ticks: Colorado
coordinate system, north zone (Lambert conformal conic)
1000-meter Universal Transverse Mercator grid, zone 13
1927 North American Datum
To place on the predicted North American Datum 1983
move the projection lines 6 meters north and
50 meters east as shown by dashed corner ticks
Certain land lines are omitted because of insufficient data
There may be private inholdings within the boundaries of the
National or State reservations shown on this map



ROAD CLASSIFICATION
Primary highway, hard surface ————
Secondary highway, hard surface ————
Light-duty road, hard or improved surface ————
Unimproved road ————
Interstate Route ————
U.S. Route ————
State Route ————

CABIN CREEK, COLO.
NE/4 HOT SULPHUR SPRINGS 15' QUADRANGLE
40106-B1-TF-024

1980

DMA 4764 II NE—SERIES W877

