

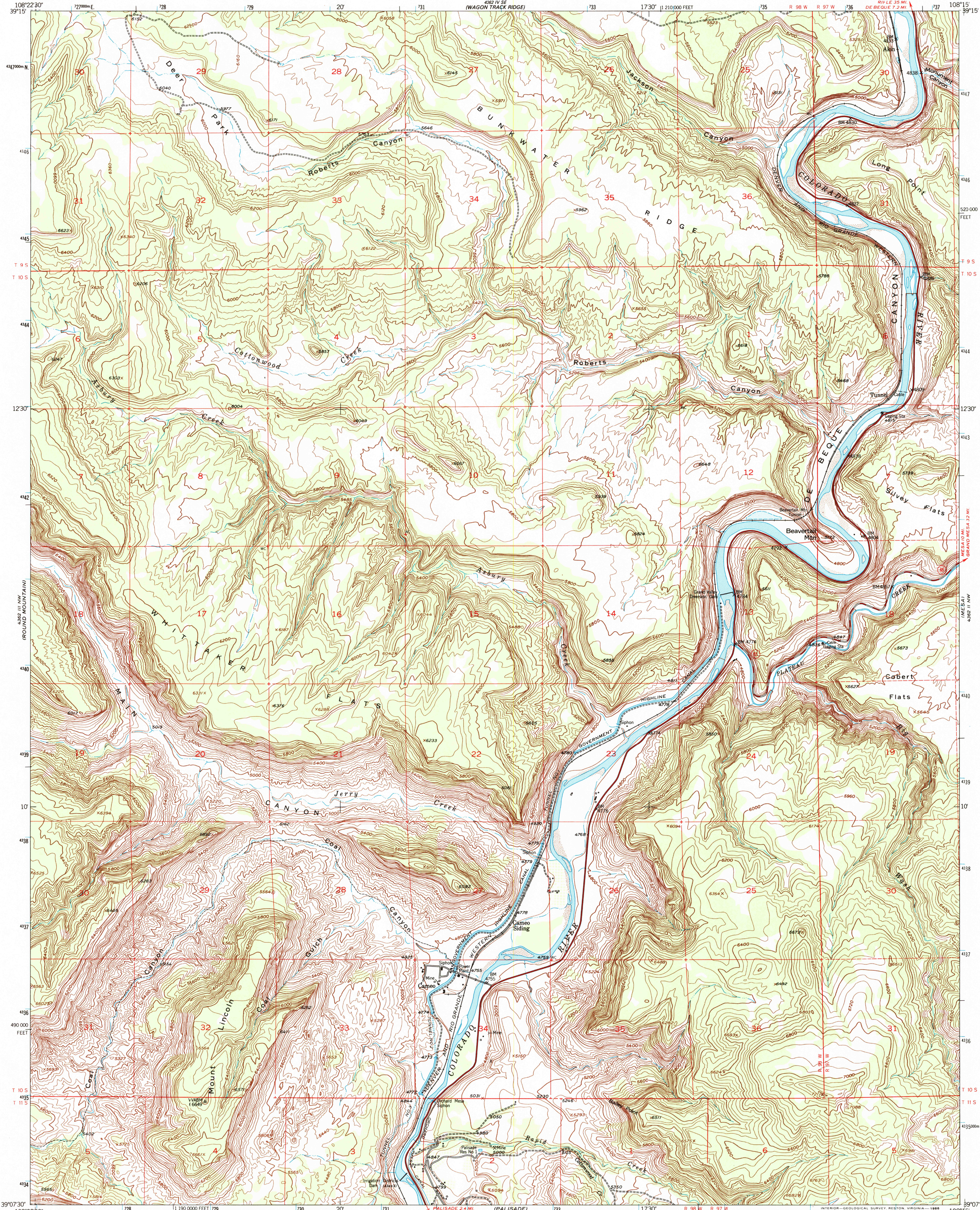
482 II NW
(WAGON TRACK RIDGE)



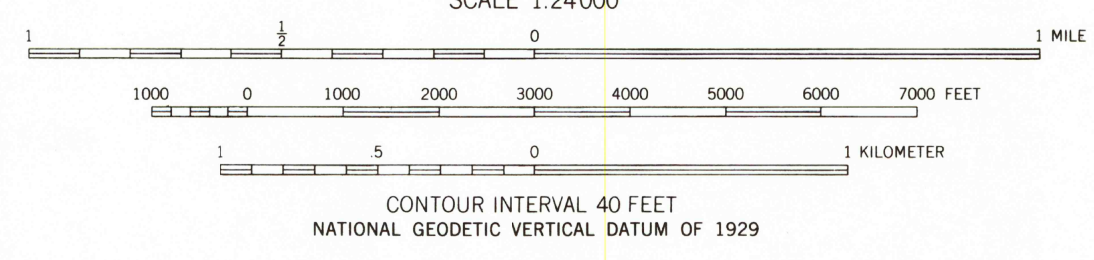
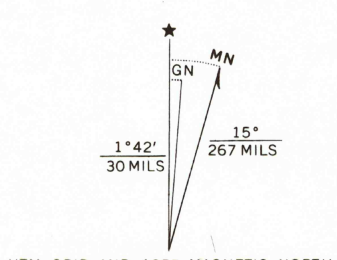
U.S. DEPARTMENT OF THE INTERIOR
U.S. GEOLOGICAL SURVEY

CAMEO QUADRANGLE
COLORADO-MESA CO.
7.5 MINUTE SERIES (TOPOGRAPHIC)

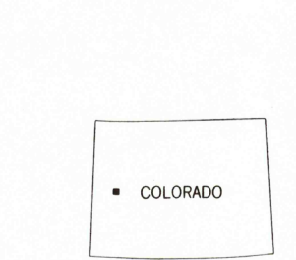
482 I SW
(DE BEQUE)



Mapped, edited, and published by the Geological Survey
Control by USGS and USC&GS
Topography from aerial photographs by multiplex methods
and by planetable surveys 1955. Aerial photographs taken 1951.
Polyconic projection. 1927 North American Datum
10,000-foot grid based on Colorado coordinate system,
central zone
Dashed land lines indicate approximate locations
Unchecked elevations are shown in brown
1000-meter Universal Transverse Mercator grid ticks,
zone 12, shown in blue
To place on the predicted North American Datum 1983
move the projection lines 6 meters north and
56 meters east as shown by dashed corner ticks



THIS MAP COMPLIES WITH NATIONAL MAP ACCURACY STANDARDS
FOR SALE BY U.S. GEOLOGICAL SURVEY, P.O. BOX 25286, DENVER, COLORADO 80225
A FOLDER DESCRIBING TOPOGRAPHIC MAPS AND SYMBOLS IS AVAILABLE ON REQUEST



ROAD CLASSIFICATION
Heavy-duty..... Light-duty.....
Medium-duty..... Unimproved dirt

U.S. Route..... State Route.....

RECEIVED
AUG 29 2003

JUL 22 2003
USGS Library
Reston, VA.
Topo Archive

CAMEO, COLO.
39108-B3-TF-024
1955

DMA 4362 III NE-SERIES V877

3 1818 0041739 8

555711 109084 6
BENT-1-09-0-NB51