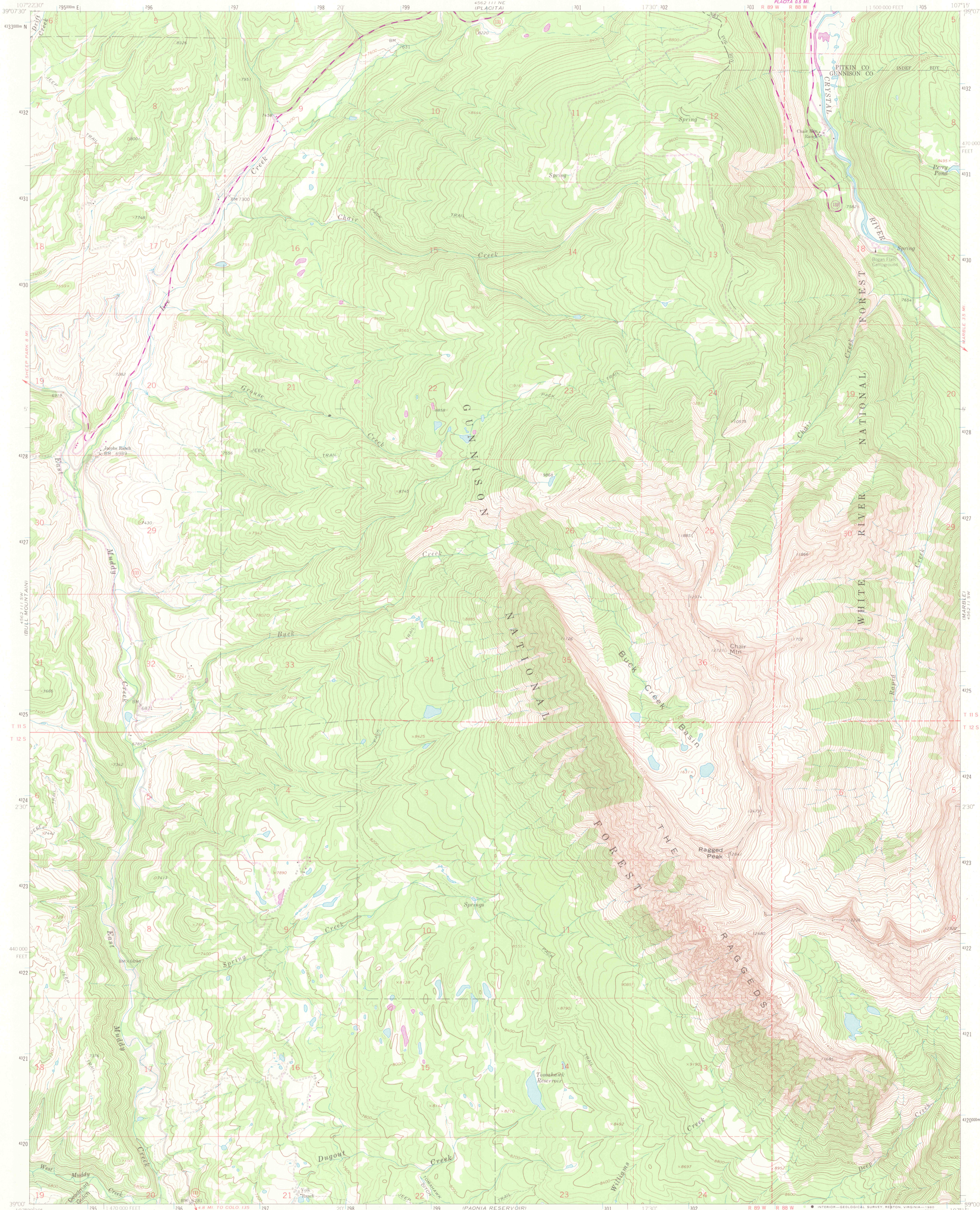


UNITED STATES
DEPARTMENT OF THE INTERIOR
GEOLOGICAL SURVEY

CHAIR MOUNTAIN QUADRANGLE
COLORADO

7.5 MINUTE SERIES (TOPOGRAPHIC)

GLENWOOD SPRINGS 35 MI.
PLACITA 0.5 MI.
1:50,000 FEET

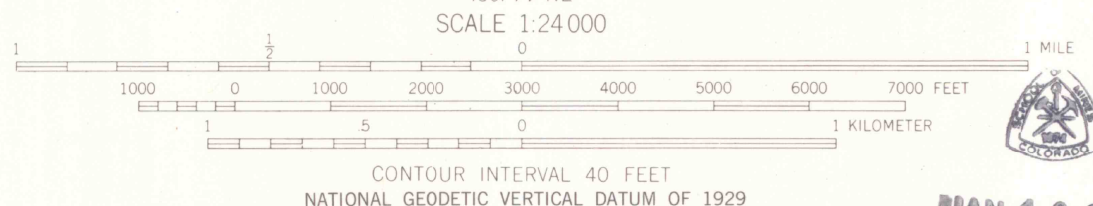


Mapped, edited, and published by the Geological Survey

Control by USGS and NOS/NOAA
Topography by photogrammetric methods from aerial photographs taken 1962. Field checked 1963.
Polyconic projection. 1927 North American datum. 10,000-foot grid based on Colorado coordinate system, central zone 1000 meter Universal Transverse Mercator grid ticks, zone 13, shown in blue.
Fine red dashed lines indicate selected fence lines.
Where omitted, land lines have not been established.

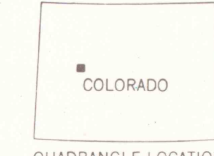
To place on the predicted North American Datum 1983 move the projection lines 5 meters north and 54 meters east as shown by dashed corner ticks.
There may be private inholdings within the boundaries of the National or State reservations shown on this map.

Revisions shown in purple compiled from aerial photographs taken 1976 and other source data. This information not field checked. Map edited 1978.



THIS MAP COMPLIES WITH NATIONAL MAP ACCURACY STANDARDS FOR SALE BY U.S. GEOLOGICAL SURVEY, DENVER, COLORADO 80225, OR RESTON, VIRGINIA 22092. A FOLDER DESCRIBING TOPOGRAPHIC MAPS AND SYMBOLS IS AVAILABLE ON REQUEST.

ROAD CLASSIFICATION	
Primary highway, hard surface	Light-duty road, hard or improved surface
Secondary highway, hard surface	Unimproved road
Interstate Route	U.S. Route
	State Route



OFFICE COPY
LIBRARY USE ONLY

CHAIR MOUNTAIN, COLO.
N3900-W10715/7.5

1963
PHOTOREVISED 1978
DMA 4562 111 SE-SERIES V877

G 3700
s24
.G4
MAP ROOM