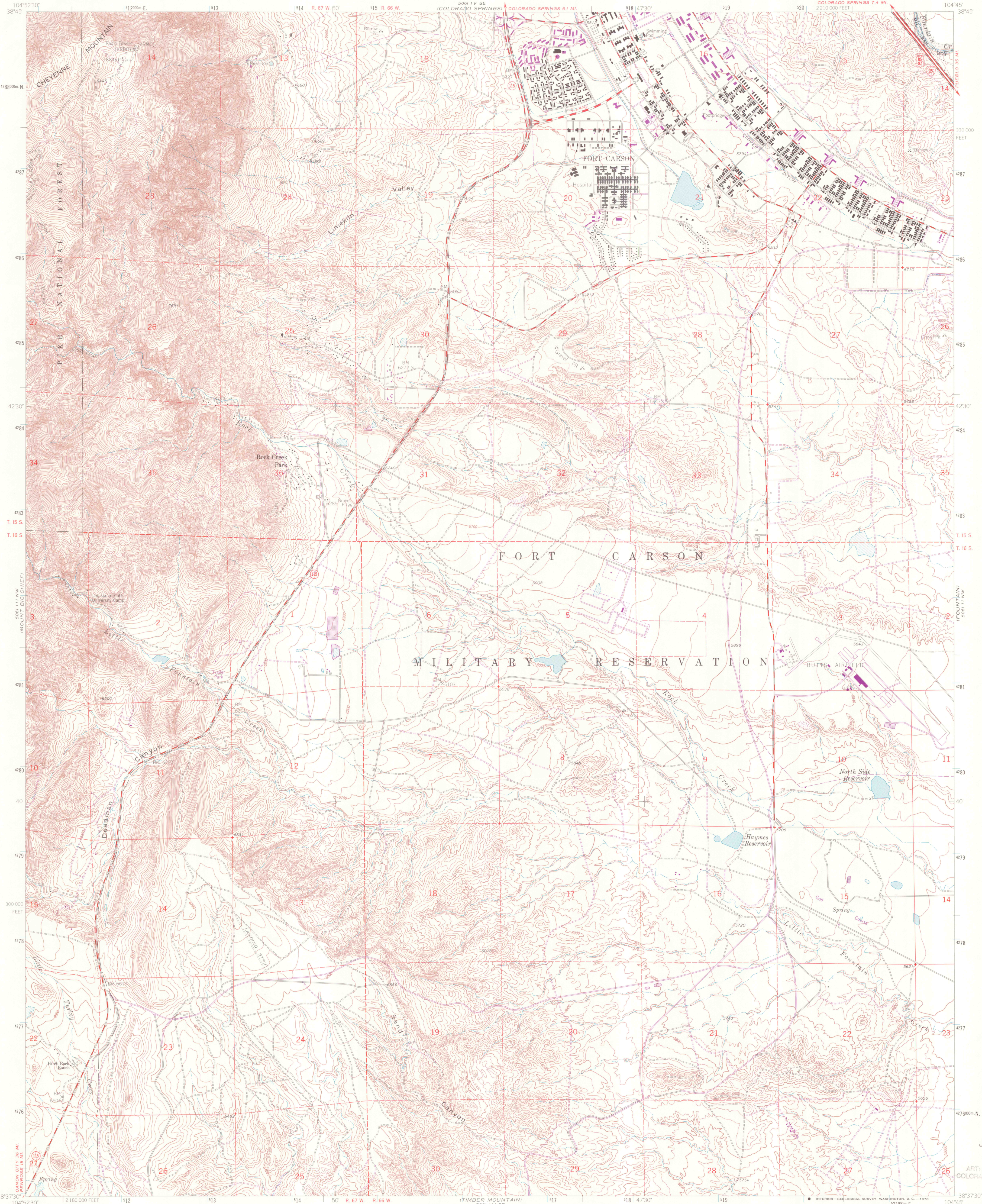


UNITED STATES  
DEPARTMENT OF THE INTERIOR  
GEOLOGICAL SURVEY

CHEYENNE MOUNTAIN QUADRANGLE  
COLORADO-EL PASO CO.  
7.5 MINUTE SERIES (TOPOGRAPHIC)  
NE 1/4 MOUNT BIG CHIEF 15 QUADRANGLE  
COLORADO SPRINGS 7.4 MI.  
2,210,000 FEET



Maped, edited, and published by the Geological Survey  
in cooperation with U. S. Corps of Engineers

Control by USGS and USC&GS

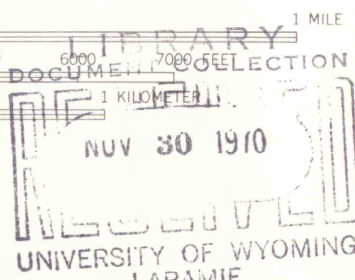
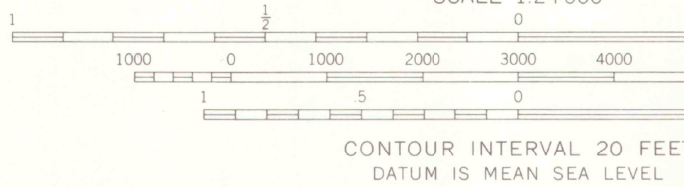
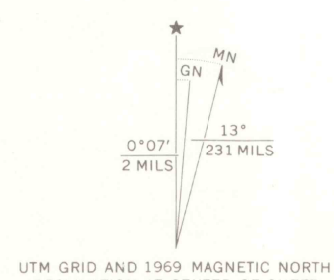
Topography by photogrammetric methods from aerial photographs  
taken 1947. Field checked 1948. Revised from aerial  
photographs taken 1960. Field checked 1961.

Polyconic projection. 1927 North American datum  
10,000-foot grid based on Colorado coordinate system,  
central zone.  
1000-meter Universal Transverse Mercator grid ticks,  
zone 13, shown in blue.

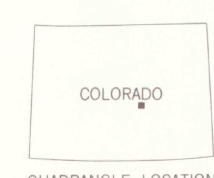
Fine red dashed lines indicate selected fence and field lines where  
generally visible on aerial photographs. This information is unchecked  
Where omitted, land lines have not been established.

Revisions shown in purple compiled from aerial  
photographs taken 1969. This information not field checked.

THIS MAP COMPLIES WITH NATIONAL MAP ACCURACY STANDARDS  
FOR SALE BY U. S. GEOLOGICAL SURVEY, DENVER, COLORADO 80225, OR WASHINGTON, D. C. 20242  
A FOLDER DESCRIBING TOPOGRAPHIC MAPS AND SYMBOLS IS AVAILABLE ON REQUEST



OFFICE COPY  
LIBRARY USE ONLY



ROAD CLASSIFICATION  
Heavy-duty ——— Light duty ———  
Medium-duty ——— Unimproved dirt ———  
Interstate Route U.S. Route State Route

CHEYENNE MOUNTAIN, COLO.  
NE 1/4 MOUNT BIG CHIEF 15 QUADRANGLE  
N3837.5 - W10445.7.5

1961  
PHOTO REVISOR 1969  
AMS 5061 III NE-SERIES V877

JUL 06 2000

ARTUR LUKES LIBRARY  
COLORADO SCHOOL OF MINES

G37 00  
S24  
.G4

G37005  
CI  
W/O  
un3