

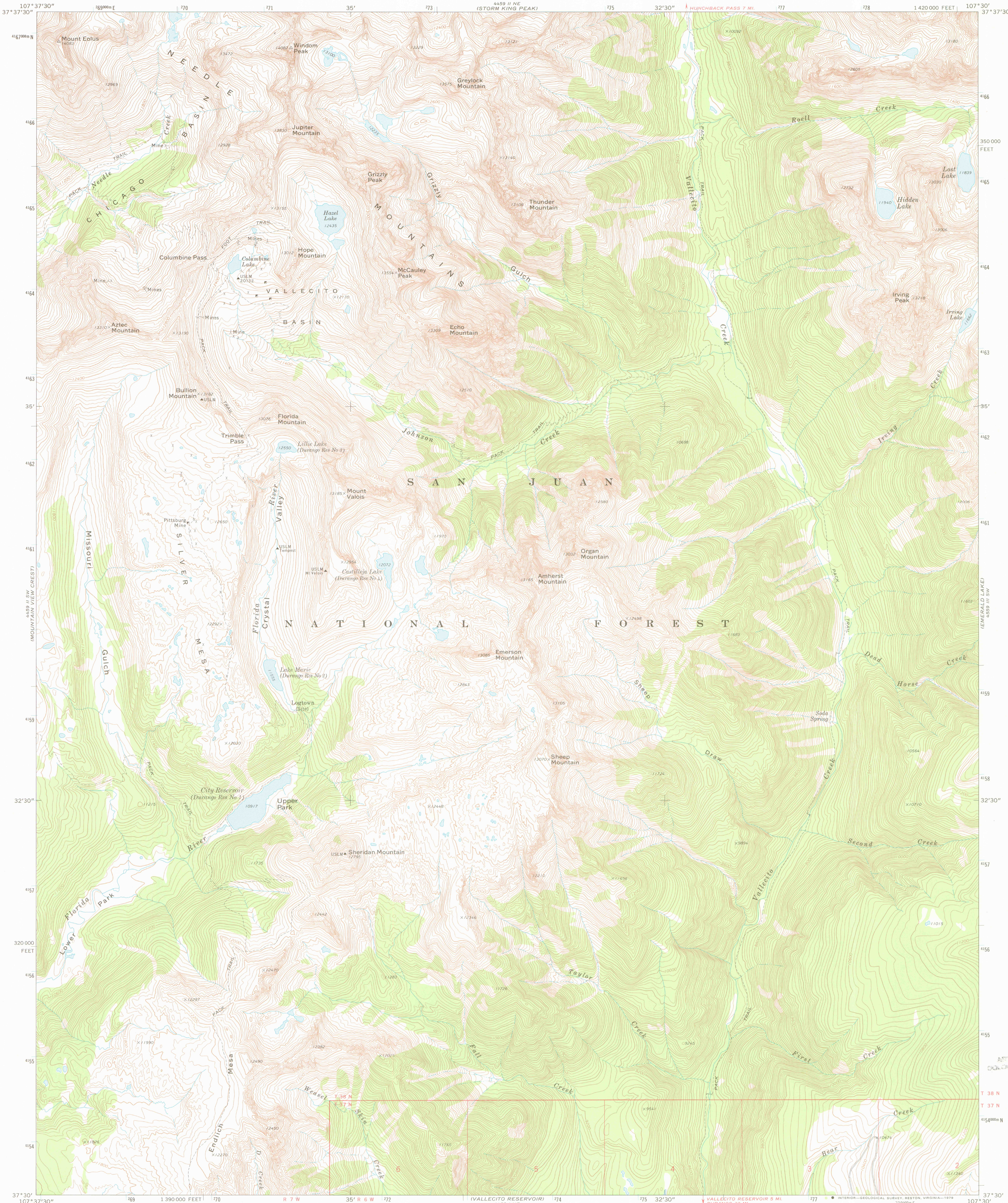
4459 II NW
(SNOWDON PEAK)

UNITED STATES
DEPARTMENT OF THE INTERIOR
GEOLOGICAL SURVEY



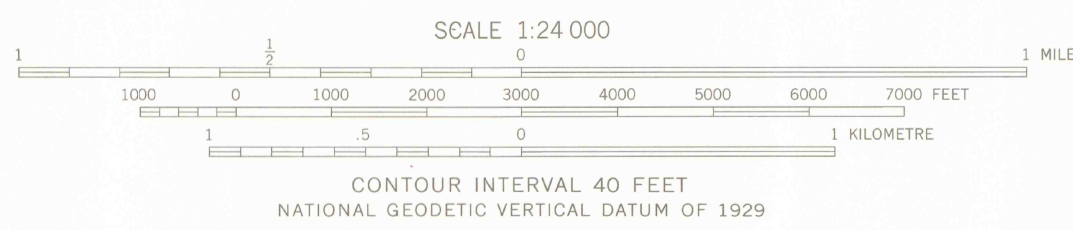
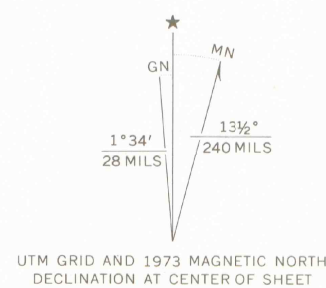
COLUMBINE PASS QUADRANGLE
COLORADO—LA PLATA CO.
7.5 MINUTE SERIES (TOPOGRAPHIC)
SE/4 NEEDLE MOUNTAINS 15' QUADRANGLE

4459 II NW
(ROCKY MOUNTAIN PEAK)



4459 II NW
(LEMON RESERVOIR)

Mapped, edited, and published by the Geological Survey
Control by USGS and USC&GS
Topography by photogrammetric methods from aerial
photographs taken 1972. Field checked 1973
Projection and 10,000-foot grid ticks: Colorado
coordinate system, south zone (Lambert conformal conic)
1000-metre Universal Transverse Mercator grid ticks,
zone 13, shown in blue. 1927 North American datum
Where omitted, land lines have not been established
or are not shown because of insufficient data
There may be private inholdings within the boundaries of
the National or State reservations shown on this map
Map photinspected 1975
No major culture or drainage changes observed



ROAD CLASSIFICATION

Primary highway, hard surface	Light-duty road, hard or improved surface
Secondary highway, hard surface	Unimproved road
Interstate Route	U. S. Route
	State Route

COLUMBINE PASS, COLO.
SE/4 NEEDLE MOUNTAINS 15' QUADRANGLE
N3730—W10730/7.5

1973
PHOTOINSPECTED 1975
DMA 4459 II SE—SERIES V877

OFFICE COPY
LIBRARY USE ONLY

DEC 22 2008

3700
324
G4
MAP ROOM