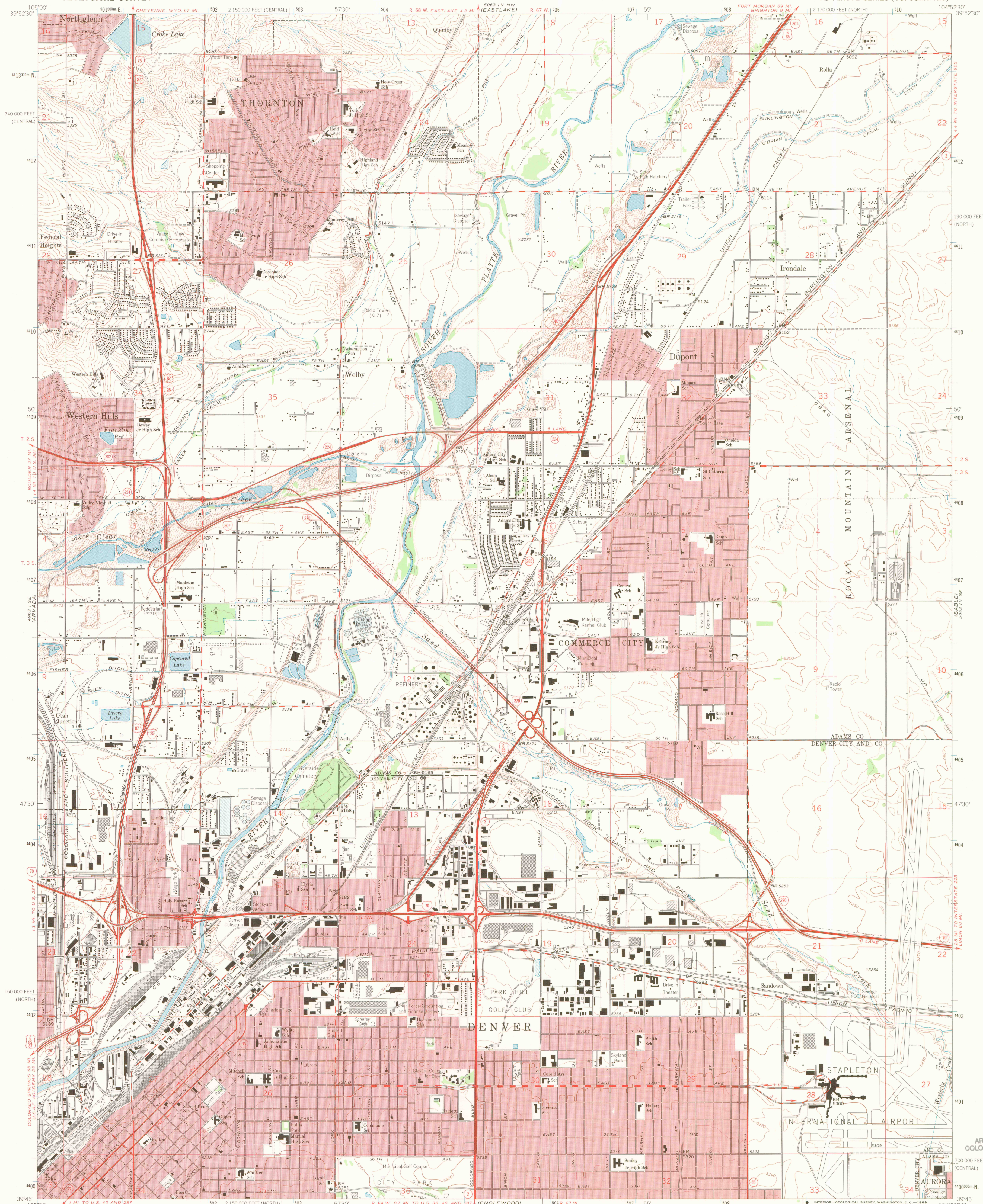


UNITED STATES
DEPARTMENT OF THE INTERIOR
GEOLOGICAL SURVEY

COMMERCE CITY QUADRANGLE
COLORADO
7.5 MINUTE SERIES (TOPOGRAPHIC)



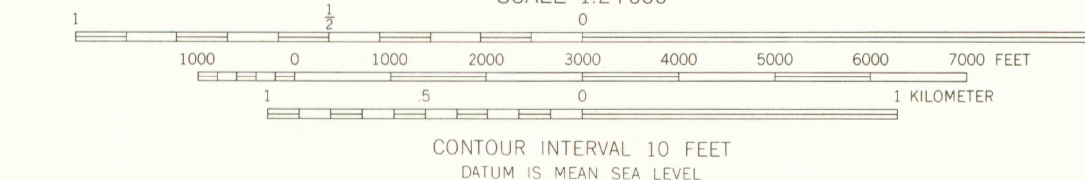
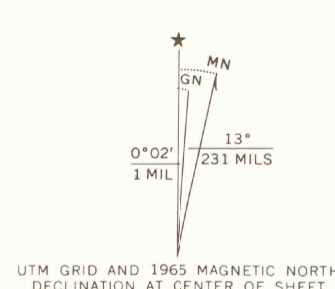
Mapped, edited, and published by the Geological Survey

Control by USGS and USC&GS

Topography by photogrammetric methods from aerial photographs
taken 1964. Field checked 1965. Supersedes Derby map dated 1957

Polyconic projection. 1927 North American datum
10,000-foot grids based on Colorado coordinate system,
north and central zones
1000-meter Universal Transverse Mercator grid ticks,
zone 13, shown in blue

Red tint indicates areas in which only landmark buildings are shown
Fine red dashed lines indicate selected fence lines
This map does not reflect ground conditions resulting
from flood of June 1965



THIS MAP COMPLIES WITH NATIONAL MAP ACCURACY STANDARDS
FOR SALE BY U. S. GEOLOGICAL SURVEY, DENVER, COLORADO 80225, OR WASHINGTON, D. C. 20242
A FOLDER DESCRIBING TOPOGRAPHIC MAPS AND SYMBOLS IS AVAILABLE ON REQUEST

ROAD CLASSIFICATION

Heavy-duty	Light-duty
Medium-duty	Unimproved dirt
Interstate Route	U.S. Route
	State Route

OFFICE COPY
LIBRARY
COMMERCE CITY, COLO.
N3945-W10452.5/7.5
1965
AMS 5063 IV SW-SERIES V877

JUL 2 9 1999

MAP ROOM
ARTHUR LAKES LIBRARY
COLORADO SCHOOL OF MINES

700 000 FEET
(CENTRAL)
4400000 N.
39°45'
104°52'30"

2 170 000 FEET (CENTRAL)
5100000 E.

2 170 000 FEET (NORTH)
104°52'30"

2 170 000 FEET (CENTRAL)
5100000 E.

2 170 000 FEET (NORTH)
104°52'30"

2 170 000 FEET (CENTRAL)
5100000 E.

2 170 000 FEET (NORTH)
104°52'30"