

4861' E  
THIRTYONE MILE  
MOUNTAIN



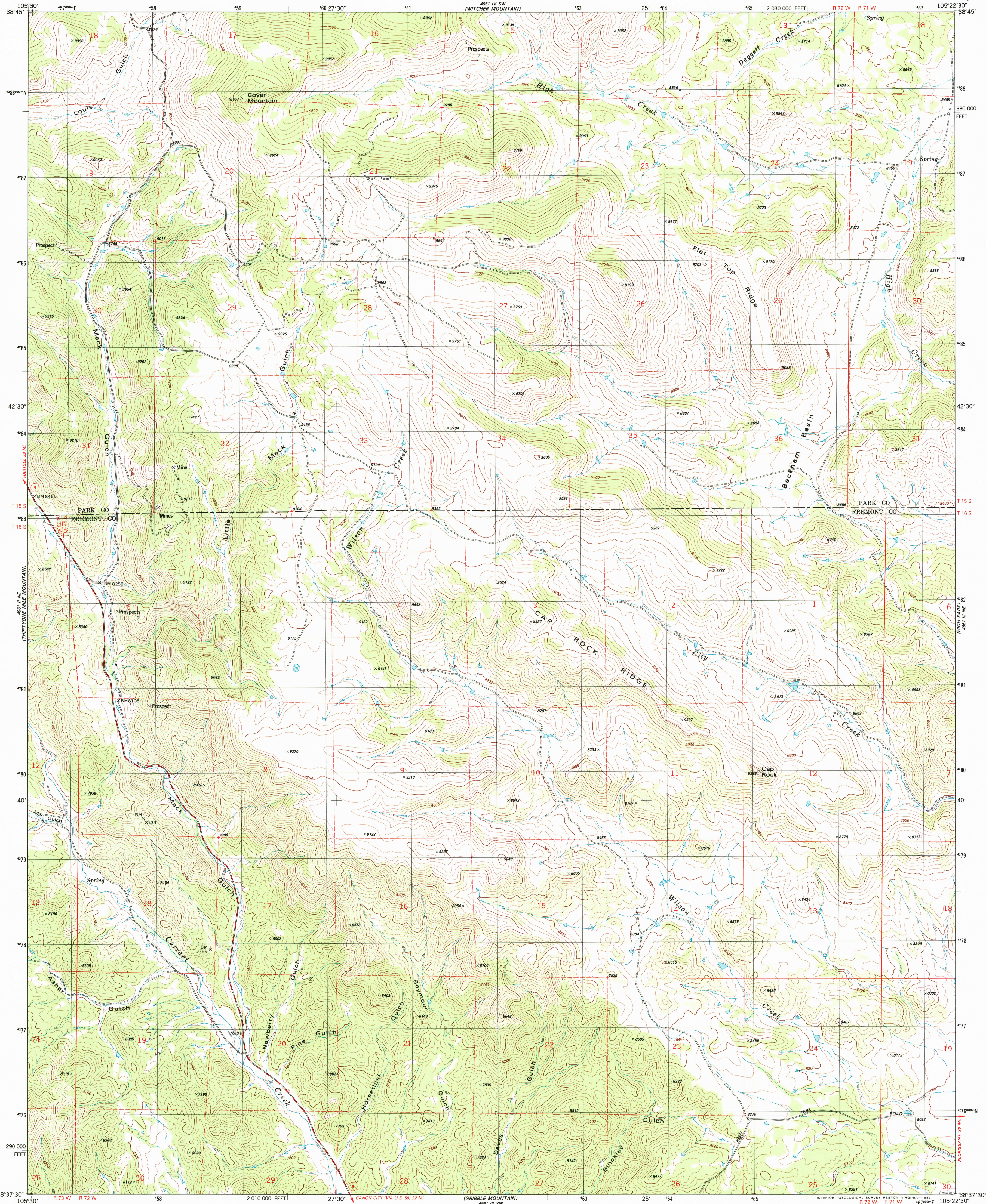
U.S. DEPARTMENT OF THE INTERIOR  
U.S. GEOLOGICAL SURVEY

COVER MOUNTAIN QUADRANGLE  
COLORADO

7.5 MINUTE SERIES (TOPOGRAPHIC)

NW/4 COVER MTN. 15' QUADRANGLE

4861' E  
THIRTYONE MILE  
MOUNTAIN



Mapped, edited, and published by the Geological Survey

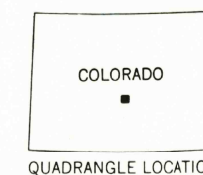
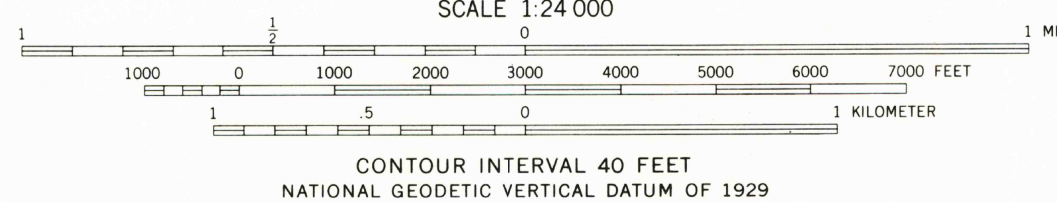
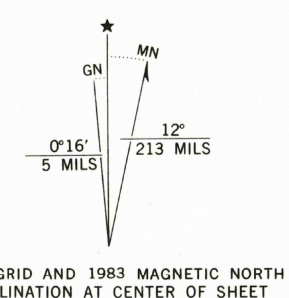
Control by USGS and NOS/NOAA

Topography by photogrammetric methods from aerial photographs  
taken 1975. Field checked 1976. Map edited 1983

Projection and 10,000-foot grid ticks: Colorado  
coordinate system, central zone (Lambert conformal conic)  
1000-meter Universal Transverse Mercator grid, zone 13  
1927 North American datum

To place on the predicted North American Datum 1983  
move the projection lines 4 meters north and  
49 meters east as shown by dashed corner ticks

Fine red dashed lines indicate selected fence lines



ROAD CLASSIFICATION	
Primary highway, hard surface	Light-duty road, hard or improved surface
Secondary highway, hard surface	Unimproved road
Interstate Route	U. S. Route
	State Route

RECEIVED  
JUL 3 1 2002

COVER MOUNTAIN, COLO.  
NW/4 COVER MTN. 15' QUADRANGLE  
N3837.5-W10522.5/7.5

USGS  
HISTORICAL MAP ARCHIVES

1983

DMA 4961 III NW-SERIES V877

THIS MAP COMPLIES WITH NATIONAL MAP ACCURACY STANDARDS  
FOR SALE BY U.S. GEOLOGICAL SURVEY, P.O. BOX 25286, DENVER, COLORADO 80225  
A FOLDER DESCRIBING TOPOGRAPHIC MAPS AND SYMBOLS IS AVAILABLE ON REQUEST

