

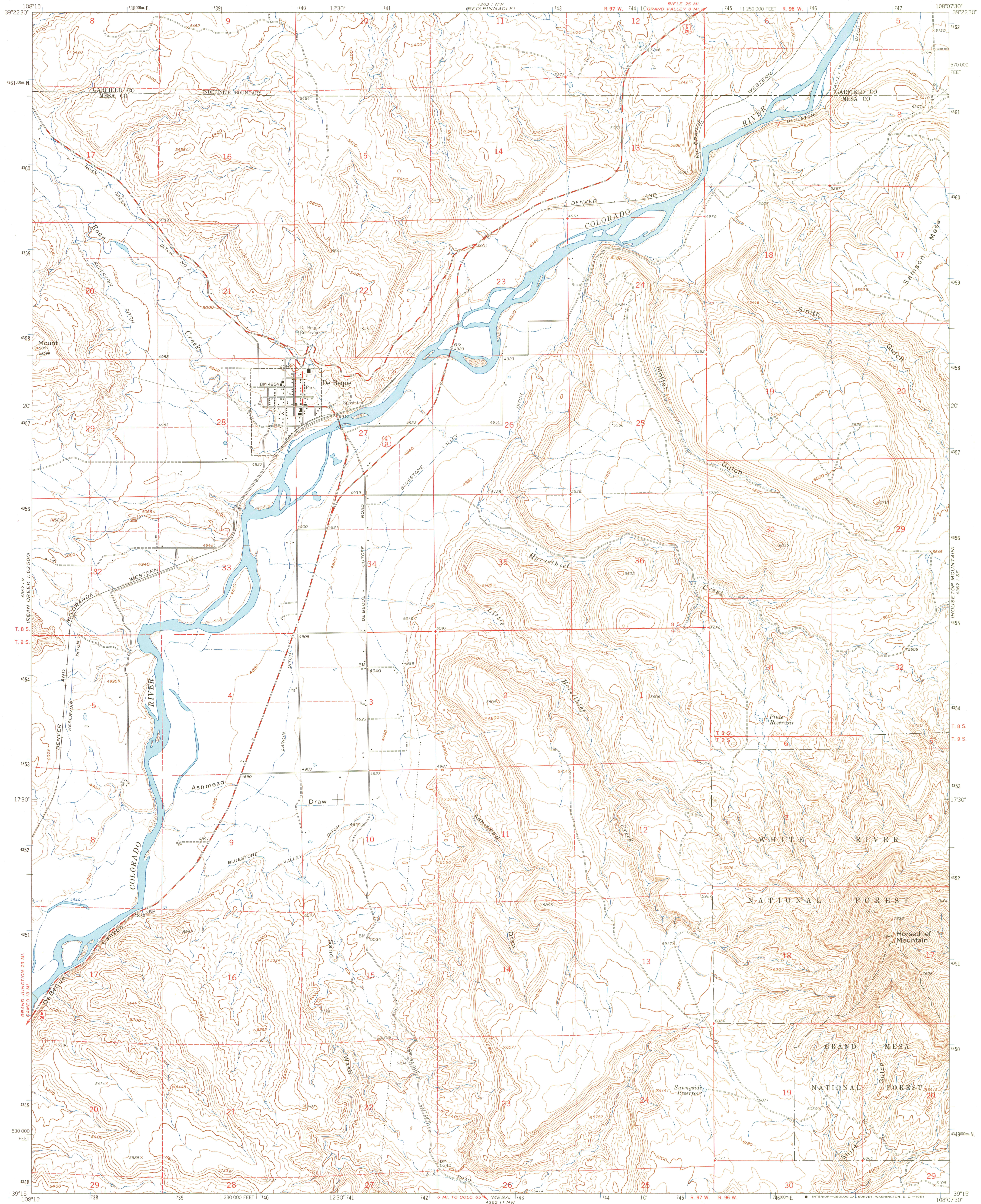
1:62,500
1:62,500
1:62,500

UNITED STATES
DEPARTMENT OF THE INTERIOR
GEOLOGICAL SURVEY

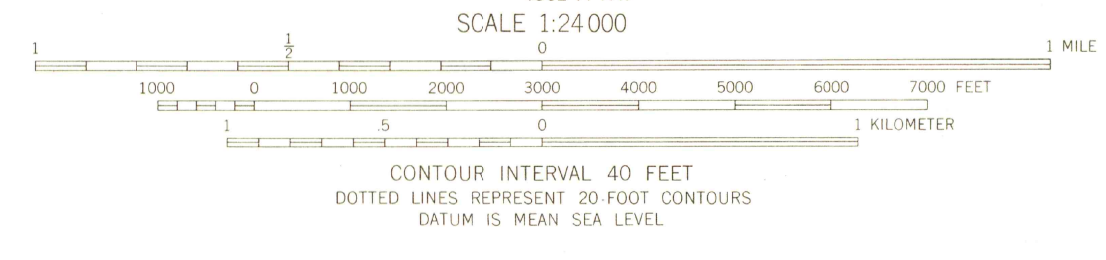
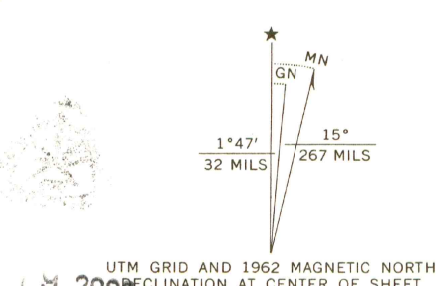
STATE OF COLORADO
OFFICE OF THE GOVERNOR

DE BEQUE QUADRANGLE
COLORADO
7.5 MINUTE SERIES (TOPOGRAPHIC)
SW 1/4 GRAND VALLEY 15' QUADRANGLE

1:62,500
1:62,500
1:62,500



Maped, edited, and published by the Geological Survey
Control by USGS and USC&GS
Topography by photogrammetric methods from aerial
photographs taken 1960. Field checked 1962
Polyconic projection. 1927 North American datum
10,000-foot grid based on Colorado coordinate system, central zone
1000-meter Universal Transverse Mercator grid ticks,
zone 12, shown in blue
Fine red dashed lines indicate selected fence lines



THIS MAP COMPLIES WITH NATIONAL MAP ACCURACY STANDARDS
FOR SALE BY U.S. GEOLOGICAL SURVEY, DENVER 25, COLORADO OR WASHINGTON 25, D.C.
A FOLDER DESCRIBING TOPOGRAPHIC MAPS AND SYMBOLS IS AVAILABLE ON REQUEST

DE BEQUE, COLO.
SW 1/4 GRAND VALLEY 15' QUADRANGLE
N3915-W10807.5/7.5

1962
AMS 4362 1 SW-SERIES V877

G 3700
c24
.G4
MAP ROOM