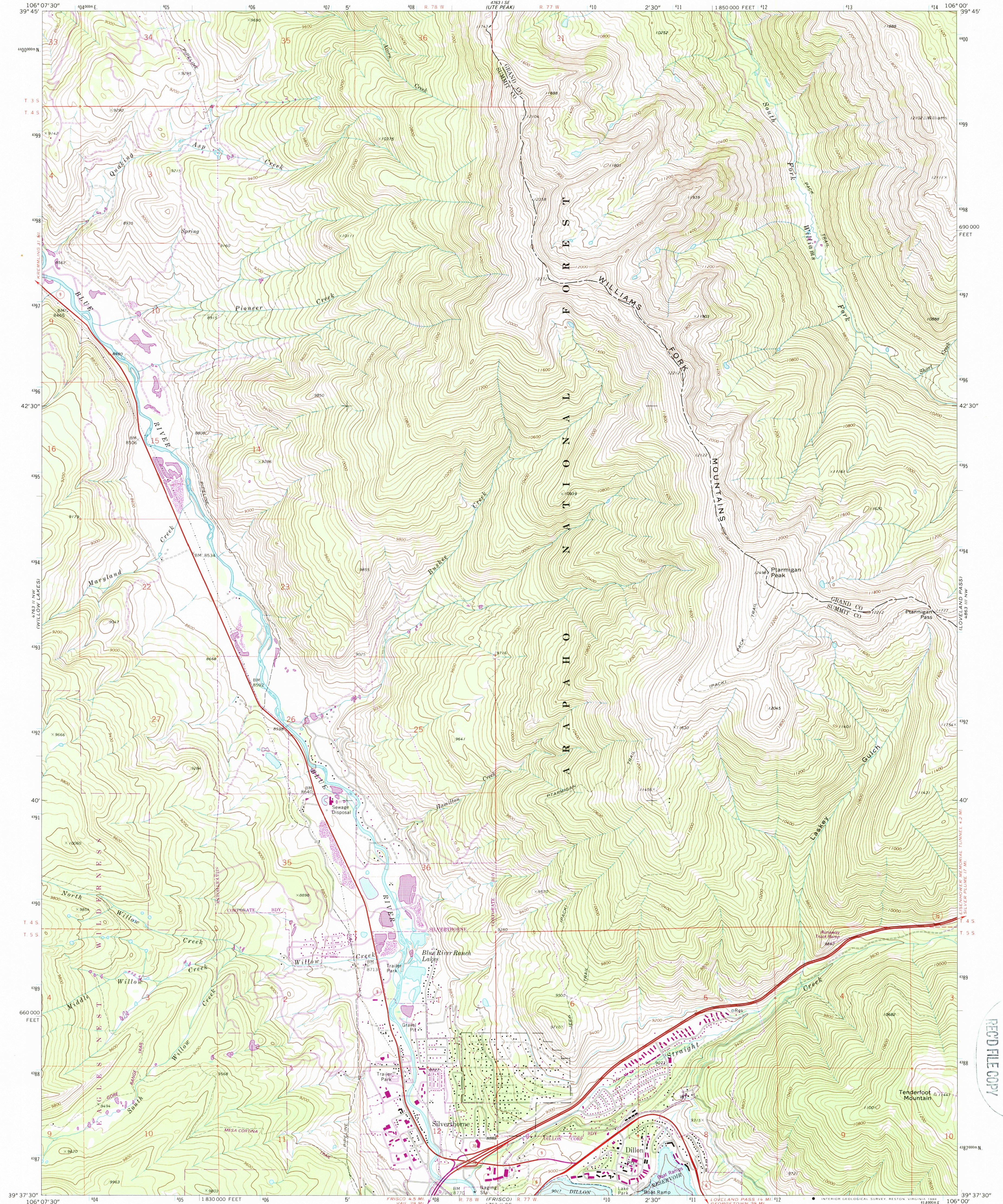


UNITED STATES  
DEPARTMENT OF THE INTERIOR  
GEOLOGICAL SURVEY

DILLON QUADRANGLE  
COLORADO  
7.5 MINUTE SERIES (TOPOGRAPHIC)



Mapped, edited, and published by the Geological Survey

Control by USGS, NOS, NOAA, and Denver Water Board

Topography by photogrammetric methods from aerial

photographs taken 1969. Field checked 1970

Polyconic projection. 1927 North American Datum

10,000-foot grid based on Colorado coordinate system,

central zone

1000-meter Universal Transverse Mercator grid ticks,

zone 13, shown in blue

Fine red dashed lines indicate selected fence lines

Certain land lines are omitted because of insufficient data

Areas covered by dashed light-blue pattern are

subject to controlled inundation

Underwater contours from AMS compilation

from aerial photographs taken 1958

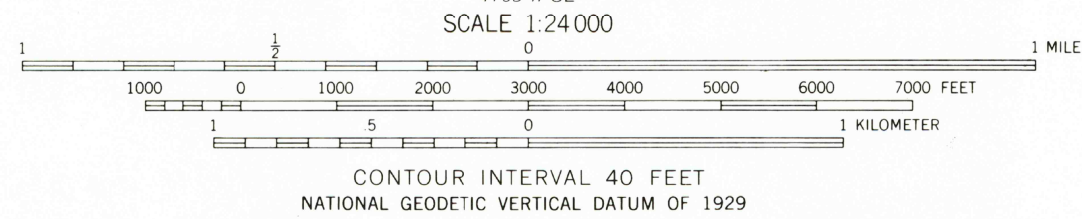
There may be private inholdings within the boundaries

of the National or State reservations shown on this map

To place on the predicted North American Datum 1983

move the projection lines 5 meters north and

50 meters east as shown by dashed corner ticks



THIS MAP COMPLIES WITH NATIONAL MAP ACCURACY STANDARDS  
FOR SALE BY U.S. GEOLOGICAL SURVEY  
DENVER, COLORADO 80225, OR RESTON, VIRGINIA 22092  
A FOLDER DESCRIBING TOPOGRAPHIC MAPS AND SYMBOLS IS AVAILABLE ON REQUEST

Revisions shown in purple and woodland  
compiled from aerial photographs taken 1983  
and other source data. Partial field check  
by U. S. Forest Service. Map edited 1987

ROAD CLASSIFICATION  
Primary highway, hard surface  
Secondary highway, hard surface  
Unimproved road  
Interstate Route  
U. S. Route  
State Route

DILLON, COLO.  
39106-F1-TF-024

1970  
PHOTOREVISED 1987  
DMA 4763 II NE-SERIES V87

USGS NMD HISTORICAL MAP  
OCT 14 1988  
REC'D FILE COPY