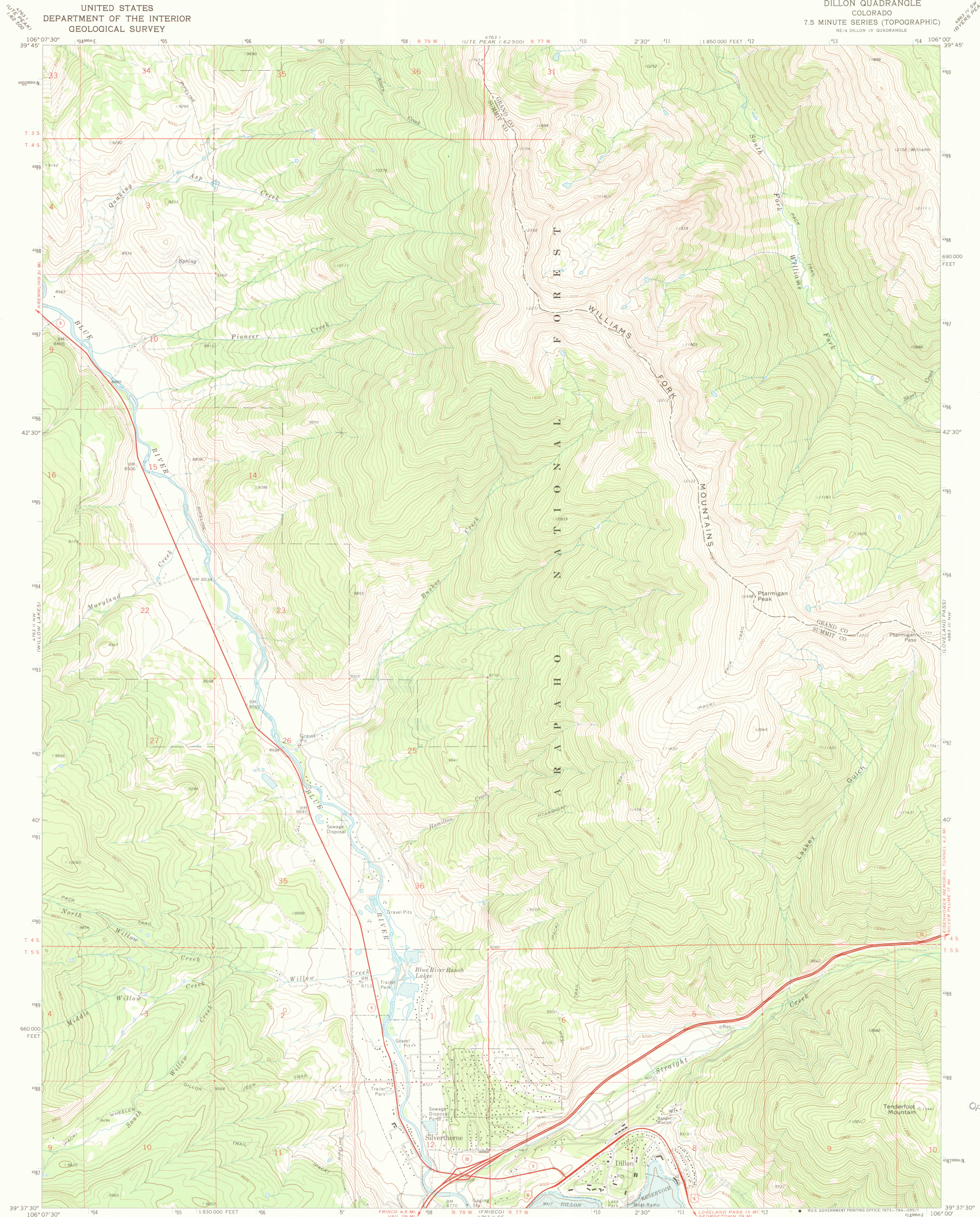


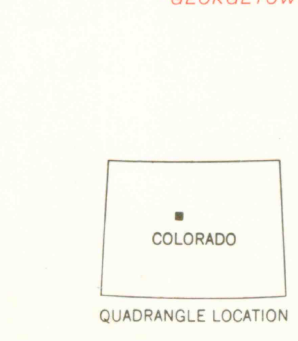
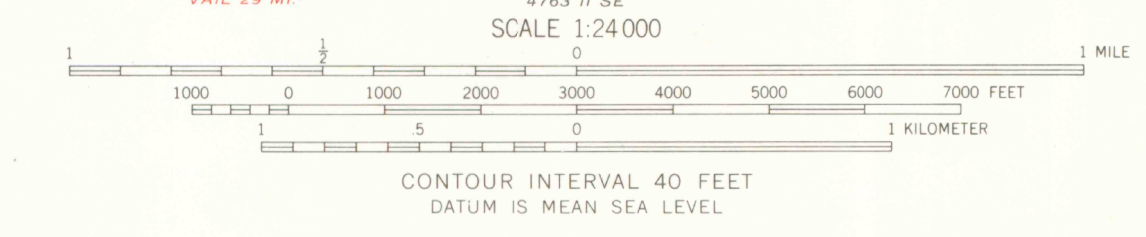
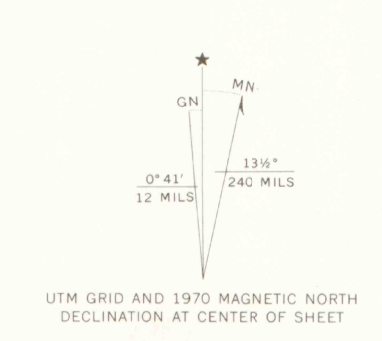
UNITED STATES  
DEPARTMENT OF THE INTERIOR  
GEOLOGICAL SURVEY

DILLON QUADRANGLE  
COLORADO  
7.5 MINUTE SERIES (TOPOGRAPHIC)

4763 II NE  
1:62,500



Mapped, edited, and published by the Geological Survey  
Control by USGS, USC&GS, and Denver Water Board  
Topography by photogrammetric methods from aerial  
photographs taken 1969. Field checked 1970  
Polyconic projection. 1927 North American datum  
10,000-foot grid based on Colorado coordinate system,  
central zone  
1000-meter Universal Transverse Mercator grid ticks,  
zone 13, shown in blue  
Fine red dashed lines indicate selected fence lines  
Certain land lines are omitted because of insufficient data  
Areas covered by dashed light-blue pattern are  
subject to controlled inundation  
Underwater contours from AMS compilation  
from aerial photographs taken 1958



ROAD CLASSIFICATION

Primary highway, hard surface	Light-duty road, hard or improved surface
Secondary highway, hard surface	Unimproved road
State Route	U. S. Route
	State Route

U.S. GOV.  
DOCUMENTS  
ARTHUR LAKES LIBRARY  
COLORADO SCHOOL OF MINES  
GOLDEN, COLORADO

DILLON, COLO.  
NE 1/4 DILLON 15' QUADRANGLE  
N 3937.5-W 10600/7.5  
1970  
AMS 4763 II NE-SERIES V877

OFFICE COPY  
LIBRARY USE ONLY