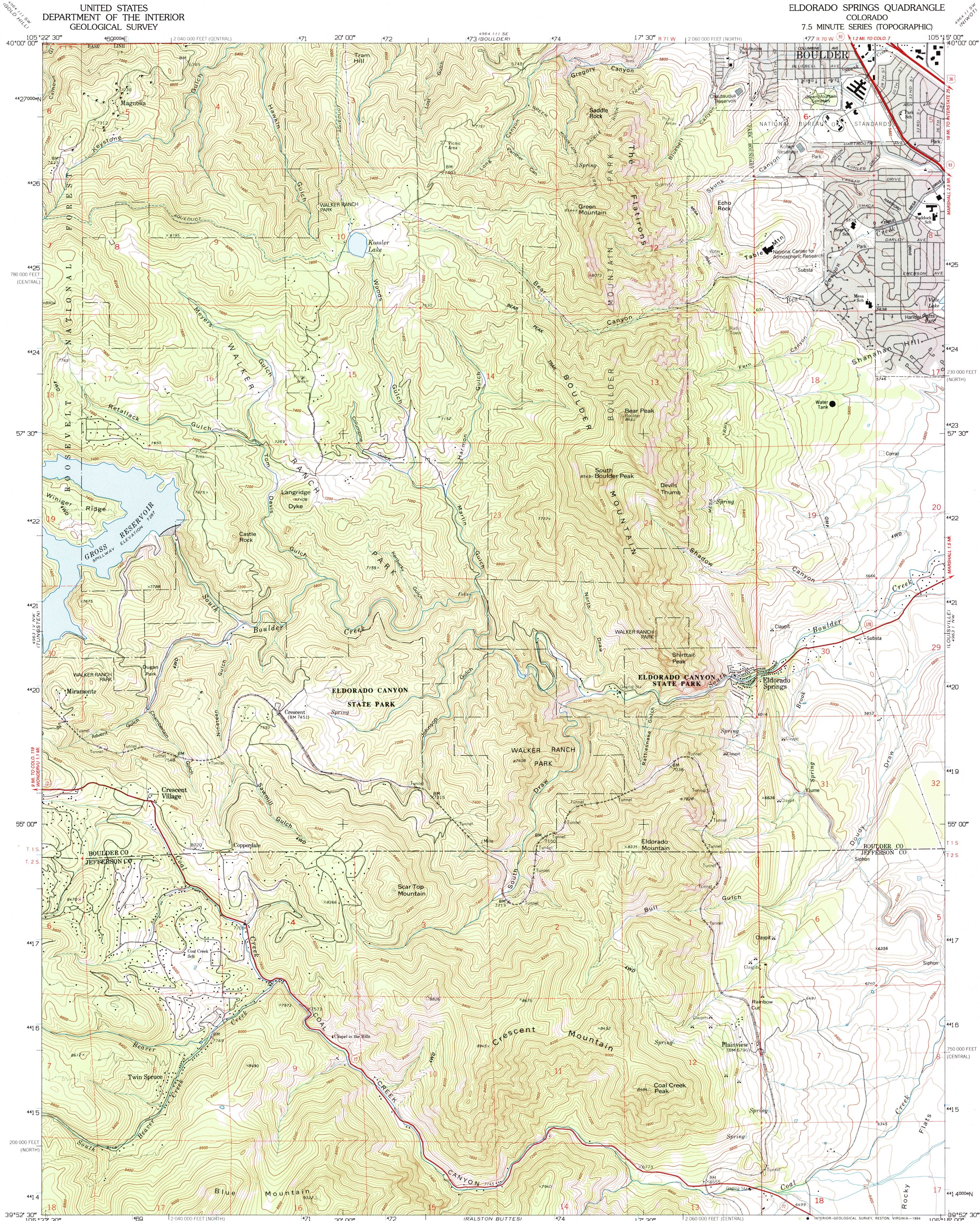
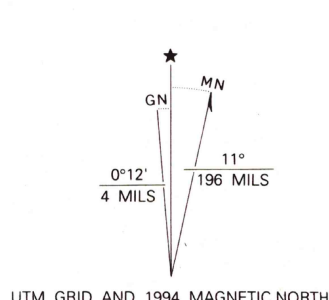


UNITED STATES
DEPARTMENT OF THE INTERIOR
GEOLOGICAL SURVEY

ELDORADO SPRINGS QUADRANGLE
COLORADO
7.5 MINUTE SERIES (TOPOGRAPHIC)



Produced by the United States Geological Survey
Control by USGS and NOS/NOAA
Compiled from aerial photographs taken 1964. Revised from aerial photographs taken 1988 and 1990 and other sources. Field checked 1995. Map edited 1994. Contours and land elevations have not been revised and may conflict with other content
North American Datum of 1927 (NAD 27). Projection and blue 10 000-meter Universal Transverse Mercator ticks, zone 13 10 000-foot ticks. Colorado Coordinate System, north and central zones
North American Datum of 1983 (NAD 83) is shown by dashed corner ticks. The values of the shift between NAD 27 and NAD 83 for 7.5-minute intersections are obtainable from National Geodetic Survey NADCON software
There may be private inholdings within the boundaries of the National or State reservations shown on this map
Gray tint indicates areas in which only landmark buildings are shown
Certain land lines are omitted because of insufficient data



SCALE 1:24 000
1 000 0 1000 2000 3000 4000 5000 6000 7000 FEET
1 KILOMETER
CONTOUR INTERVAL 40 FEET
NATIONAL GEODETIC VERTICAL DATUM OF 1929

THIS MAP COMPLIES WITH NATIONAL MAP ACCURACY STANDARDS
FOR SALE BY U. S. GEOLOGICAL SURVEY, DENVER, COLORADO 80225, OR RESTON, VIRGINIA 22092
A FOLDER DESCRIBING TOPOGRAPHIC MAPS AND SYMBOLS IS AVAILABLE ON REQUEST

ROAD CLASSIFICATION
Heavy-duty ——— Light-duty ———
Medium-duty ——— Unimproved dirt ———
U. S. Route ——— State Route ———

QUADRANGLE LOCATION
COLORADO
ELDORADO SPRINGS, CO
39105-H3-TF-024
1965
REVISED 1994
DMA 4963 IV NE-SERIES V877

OCT 25 1994
REC'D FILE COPY