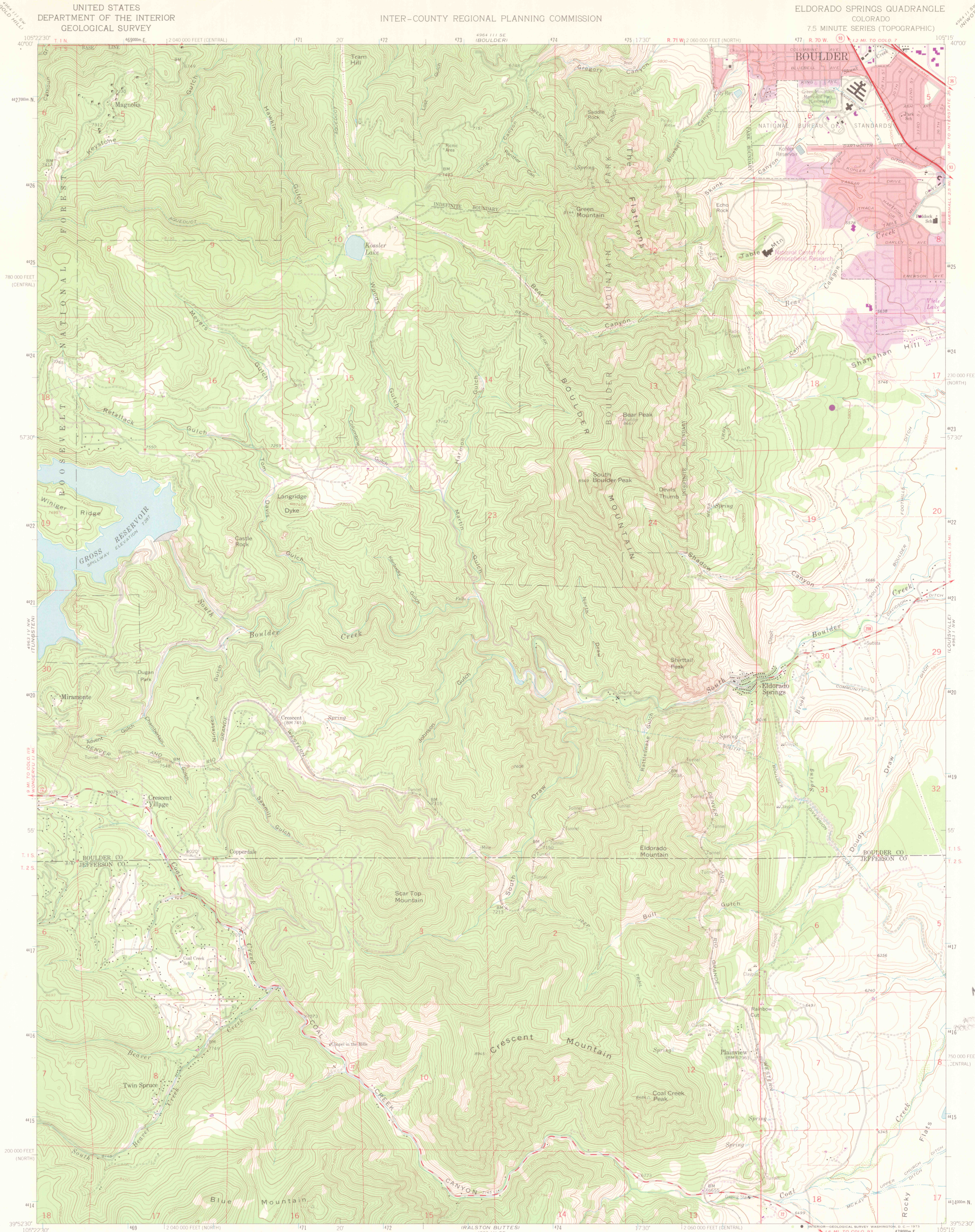


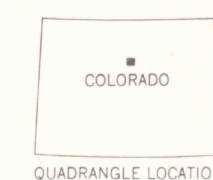
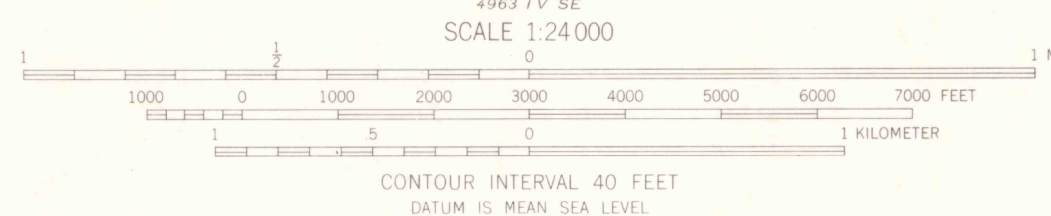
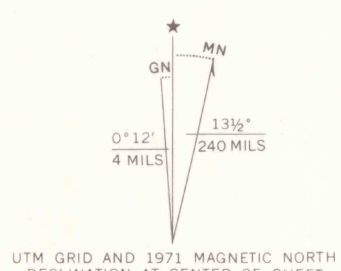
UNITED STATES  
DEPARTMENT OF THE INTERIOR  
GEOLOGICAL SURVEY

INTER-COUNTY REGIONAL PLANNING COMMISSION

ELDORADO SPRINGS QUADRANGLE  
COLORADO  
7.5 MINUTE SERIES (TOPOGRAPHIC)



Mapped, edited, and published by the Geological Survey  
Control by USGS and USC&GS  
Topography by photogrammetric methods from aerial photographs  
taken 1964. Field checked 1965. Supersedes map dated 1942  
Polyconic projection, 1927 North American datum  
10,000-foot grids based on Colorado coordinate system, north  
and central zones  
1000-meter Universal Transverse Mercator grid ticks,  
zone 13, shown in blue  
Red tint indicates areas in which only landmark buildings are shown  
Fine red dashed lines indicate selected fence lines  
Certain land lines are omitted because of insufficient data  
Revisions shown in purple compiled from aerial photographs  
taken 1971. This information not field checked  
Purple tint indicates extension of urban areas



ROAD CLASSIFICATION  
Heavy-duty ——— Light-duty ———  
Medium-duty ——— Unimproved dirt ———  
U.S. Route ——— State Route ———

ELDORADO SPRINGS, COLO.  
N3952.5-W10515.7.5

1965  
PHOTOREVISED 1971  
AMS 4963 IV NE-SERIES V877

OFFICE COPY  
LIBRARY USE ONLY

MOUNTAIN SPORTS  
821 PEARL ST  
BOULDER, COLO 80302

MAR 30 2004