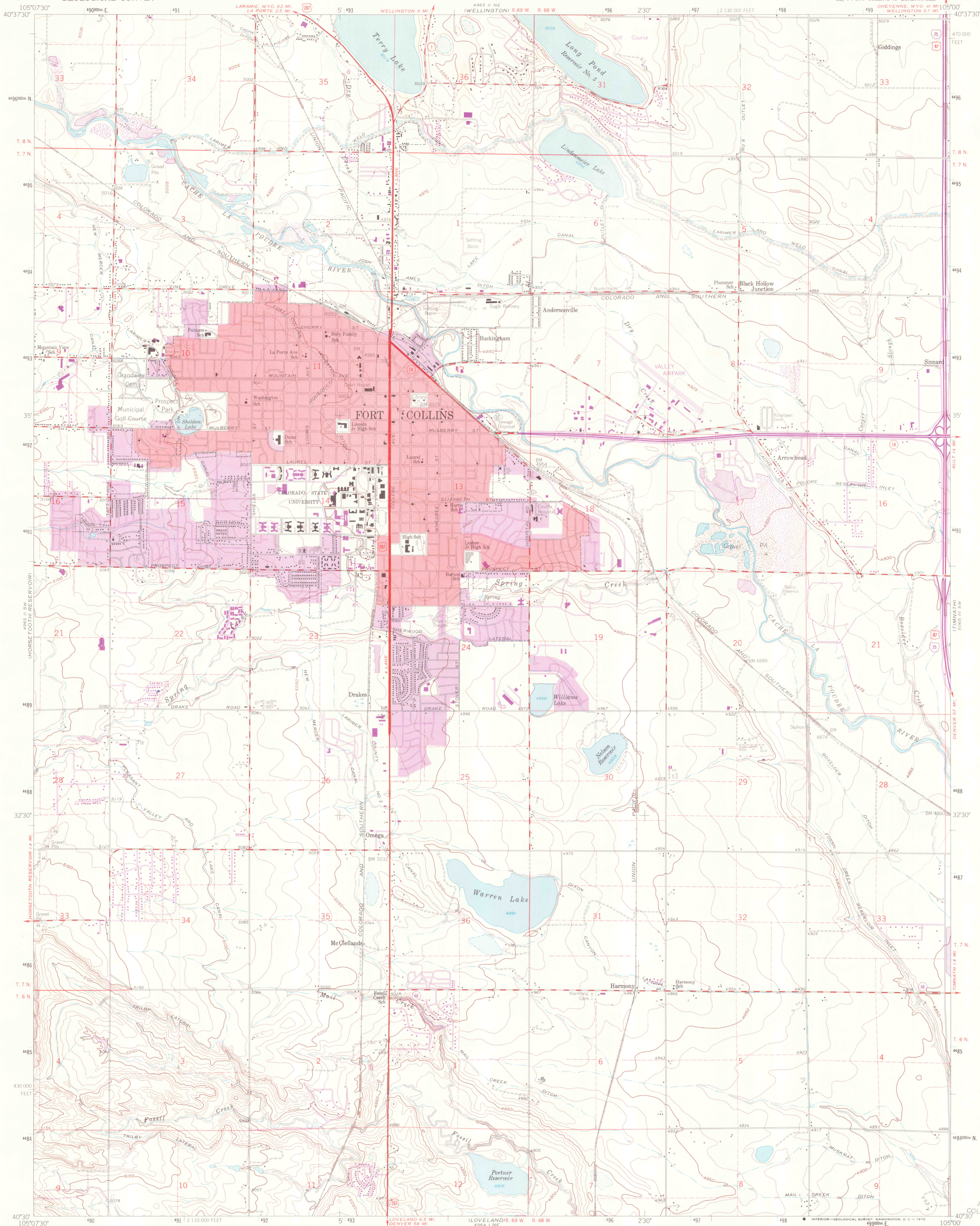


UNITED STATES
DEPARTMENT OF THE INTERIOR
GEOLOGICAL SURVEY

FORT COLLINS QUADRANGLE
COLORADO-LARIMER CO
7.5 MINUTE SERIES (TOPOGRAPHIC)
SE/4 FORT COLLINS 15 QUADRANGLE



Mapped, edited, and published by the Geological Survey

Control by USGS and USC&GS

Topography by photogrammetric methods from aerial photographs taken 1958. Field checked 1960

Polycyclic projection. 1927 North American datum
10,000-foot grid based on Colorado coordinate system,
north zone
1000-meter Universal Transverse Mercator grid ticks,
zone 13, shown in blue

Red tint indicates areas in which only landmark buildings are shown
Fine red dashed lines indicate selected fence and field lines where
generally visible on aerial photographs. This information is unchecked

Revisions shown in purple compiled from aerial photographs
taken 1969. This information not field checked

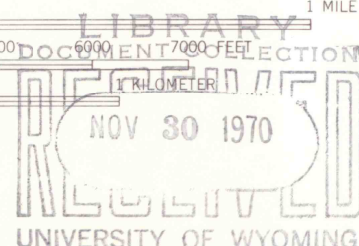
Purple tint indicates extension of urban areas

SCALE 1:24,000

CONTOUR INTERVAL 10 FEET
DOTTED LINES REPRESENT 5-FOOT CONTOURS
DATUM IS MEAN SEA LEVEL

UTM GRID AND 1969 MAGNETIC NORTH
DECLINATION AT CENTER OF SHEET

THIS MAP COMPLIES WITH NATIONAL MAP ACCURACY STANDARDS
FOR SALE BY U.S. GEOLOGICAL SURVEY, DENVER, COLORADO 80225, OR WASHINGTON, D.C. 20242
A FOLDER DESCRIBING TOPOGRAPHIC MAPS AND SYMBOLS IS AVAILABLE ON REQUEST



ROAD CLASSIFICATION
Heavy-duty ——— Light-duty ———
Medium-duty ——— Unimproved dirt ———
Interstate Route U.S. Route State Route

FORT COLLINS, COLO.
SE/4 FORT COLLINS 15 QUADRANGLE
N4030-W10500/7.5

OFFICE COPY
LIBRARY USE ONLY

1960
PHOTOREVISED 1969
AMS 4965 II SE-SERIES V877

JUL 0 6 2000

MAP BY
ARTHUR LAKES, DENVER
COLORADO SCHOOL OF MINES

G37 00
\$24
.G 4

G37003
-C1
Un3

w/o