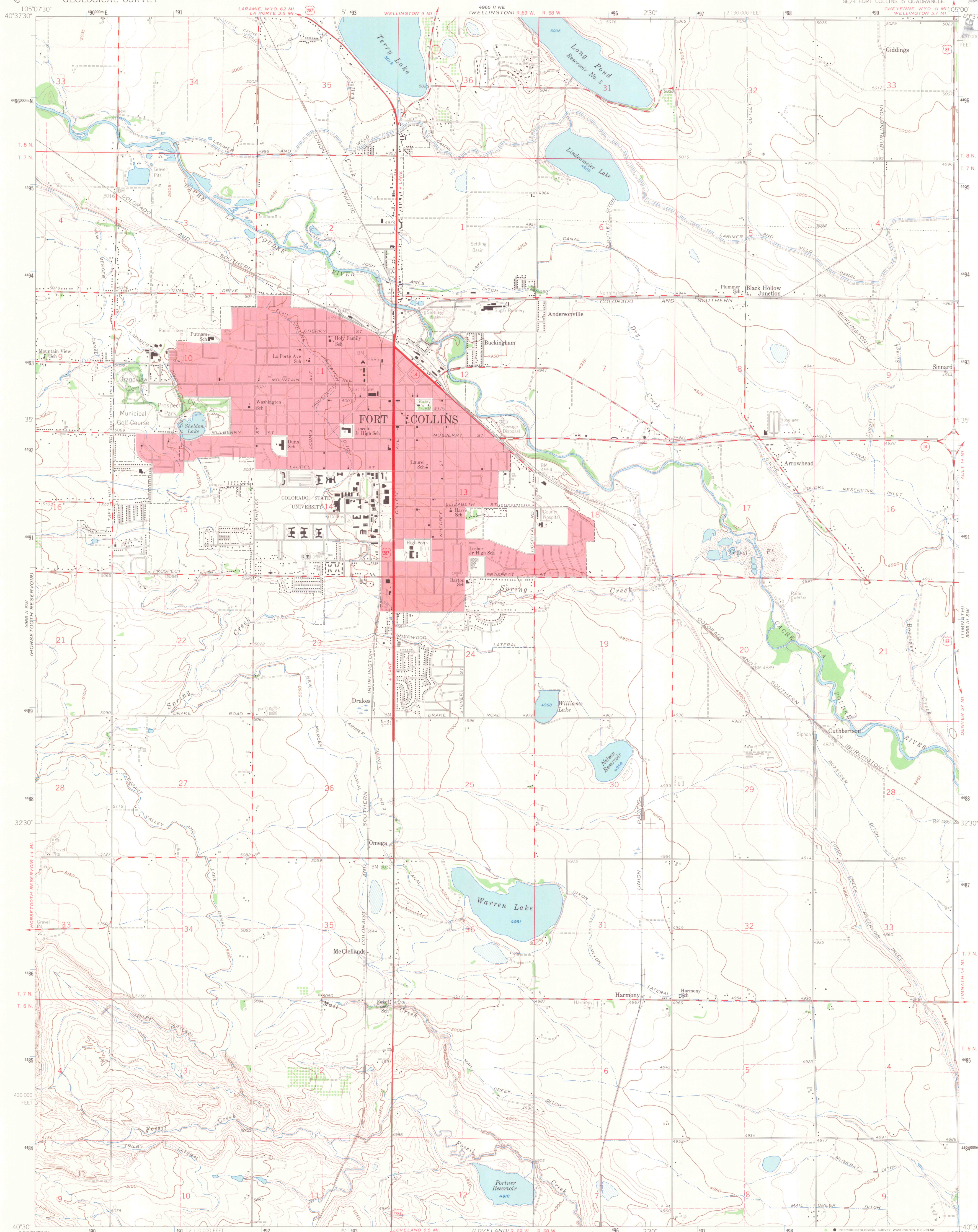


UNITED STATES  
DEPARTMENT OF THE INTERIOR  
GEOLOGICAL SURVEY

FORT COLLINS QUADRANGLE  
COLORADO-LARIMER CO  
7.5 MINUTE SERIES (TOPOGRAPHIC)  
SE/4 FORT COLLINS 15 QUADRANGLE



Mapped, edited, and published by the Geological Survey  
Control by USGS and USC&GS  
Topography by photogrammetric methods from aerial  
photographs taken 1958. Field checked 1960  
Polyconic projection. 1927 North American datum.  
10,000-foot grid based on Colorado coordinate system,  
north zone  
1000 meter Universal Transverse Mercator grid ticks,  
zone 13, shown in blue  
Red tint indicates areas in which only landmark buildings are shown  
Fine red dashed lines indicate selected fence and field lines where  
generally visible on aerial photographs. This information is unchecked

SCALE 1:24,000  
CONTOUR INTERVAL 10 FEET  
DOTTED LINES REPRESENT 5-FOOT CONTOURS  
DATUM IS MEAN SEA LEVEL  
THIS MAP COMPLIES WITH NATIONAL MAP ACCURACY STANDARDS  
FOR SALE BY U.S. GEOLOGICAL SURVEY, DENVER, COLORADO 80225 OR WASHINGTON, D.C. 20542  
A FOLDER DESCRIBING TOPOGRAPHIC MAPS AND SYMBOLS IS AVAILABLE ON REQUEST

ROAD CLASSIFICATION  
Heavy-duty ——— Light-duty ———  
Medium-duty ——— Unimproved dirt ———  
U.S. Route ——— State Route ———

FORT COLLINS, COLO.  
SE/4 FORT COLLINS 15 QUADRANGLE  
N4030-W10500/7.5

1960  
AMS 4965 II SE-SERIES V877



Fort Collins  
1960  
C.2