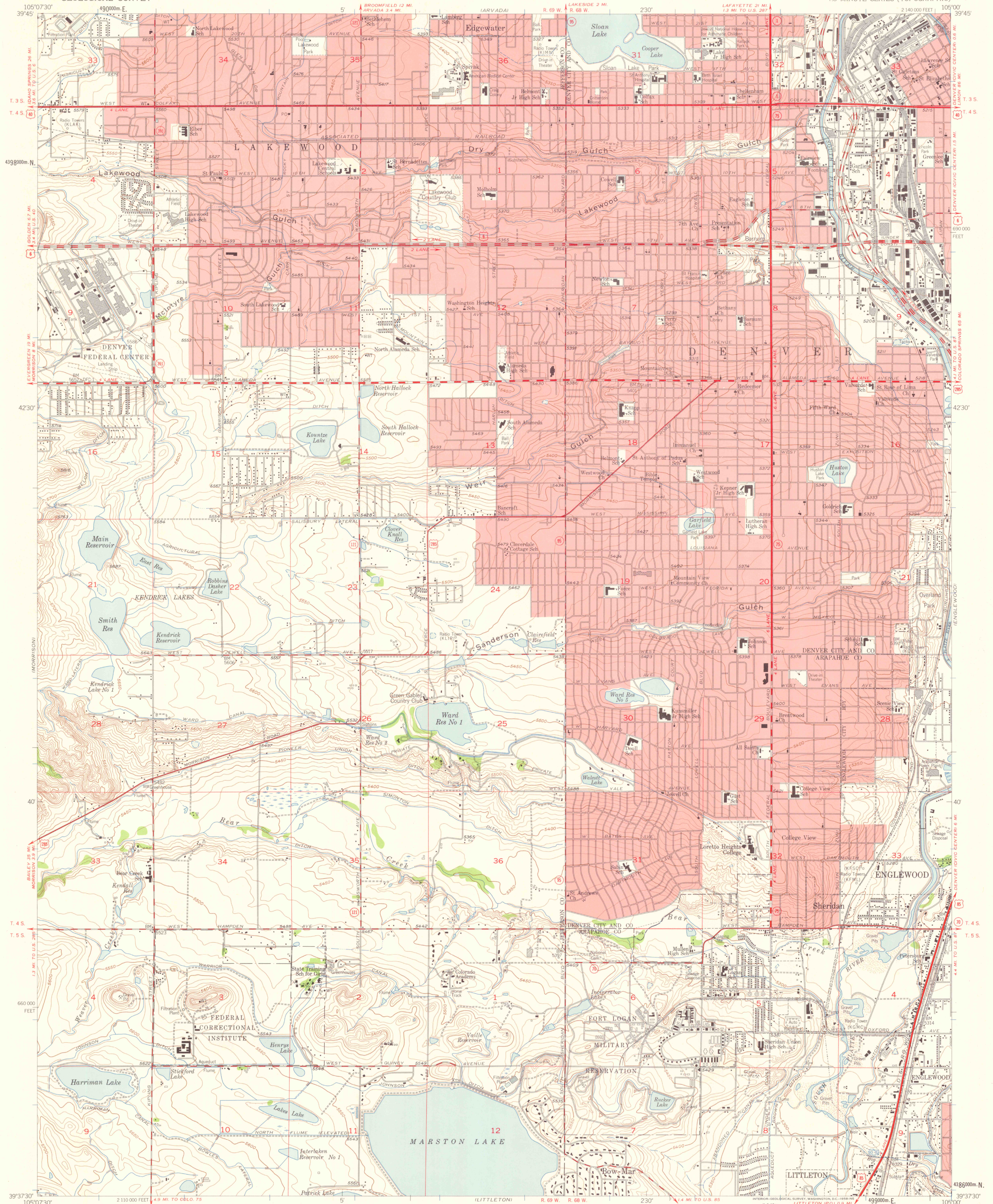


UNITED STATES
DEPARTMENT OF THE INTERIOR
GEOLOGICAL SURVEY

FORT LOGAN QUADRANGLE
COLORADO
7.5 MINUTE SERIES (TOPOGRAPHIC)



Mapped, edited, and published by the Geological Survey

Control by USGS and USC&GS

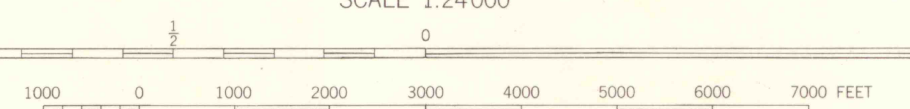
Culture and drainage in part compiled from aerial photographs
taken 1954. Topography by planetable surveys 1937, revised 1957

Polyconic projection. 1927 North American datum
10,000-foot grid based on Colorado coordinate system,
central zone

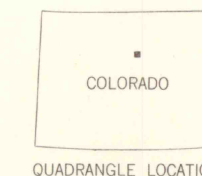
1000-meter Universal Transverse Mercator grid ticks,
zone 13, shown in blue

Red tint indicates areas in which only
landmark buildings are shown

SCALE 1:24000



CONTOUR INTERVAL 10 FEET
DATUM IS MEAN SEA LEVEL



ROAD CLASSIFICATION

Heavy-duty ——— Light-duty ———
Medium-duty ——— Unimproved dirt ———

U.S. Route ——— State Route ———

FORT LOGAN, COLO.
N3937.5-W10500/7.5

1957