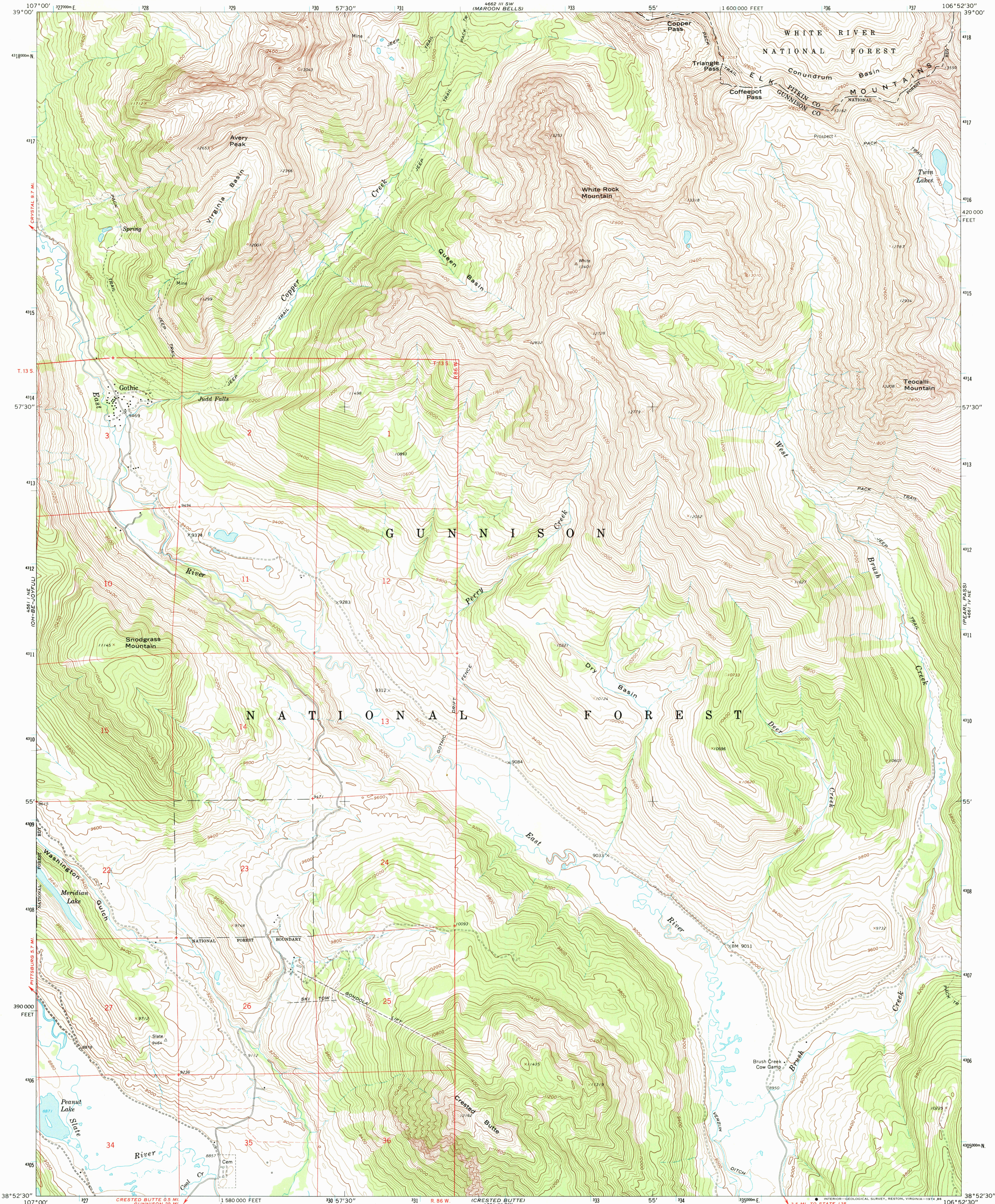


UNITED STATES  
DEPARTMENT OF THE INTERIOR  
GEOLOGICAL SURVEY

GOthic QUADRANGLE  
COLORADO  
7.5 MINUTE SERIES (TOPOGRAPHIC)  
NW/4 CRESTED BUTTE 15' QUADRANGLE

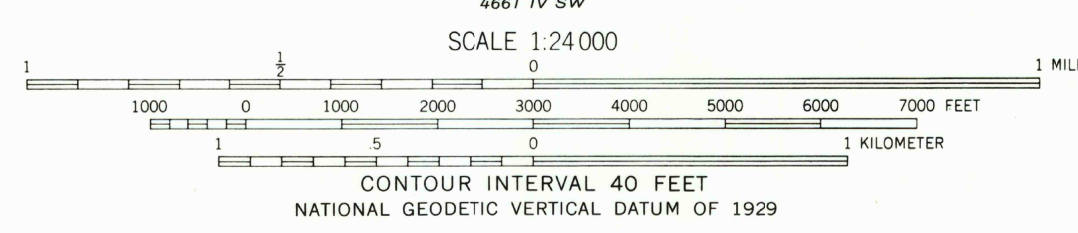
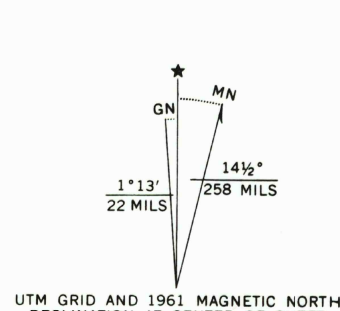


Maped, edited, and published by the Geological Survey  
Control by USGS and USC&GS

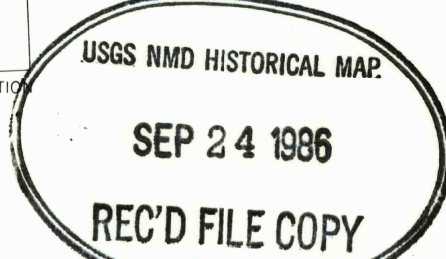
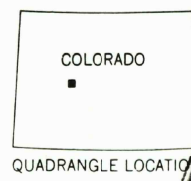
Topography by photogrammetric methods from aerial  
photographs taken 1958. Field checked 1961

Polyconic projection. 1927 North American datum  
10,000-foot grid based on Colorado coordinate system, central zone  
1000-meter Universal Transverse Mercator grid ticks,  
zone 13, shown in blue

Fine red dashed lines indicate selected fence and field lines where  
generally visible on aerial photographs. This information is unchecked  
Certain land lines are omitted because of insufficient data



THIS MAP COMPLIES WITH NATIONAL MAP ACCURACY STANDARDS  
FOR SALE BY U.S. GEOLOGICAL SURVEY, DENVER, COLORADO 80225, OR RESTON, VIRGINIA 22092  
A FOLDER DESCRIBING TOPOGRAPHIC MAPS AND SYMBOLS IS AVAILABLE ON REQUEST



ROAD CLASSIFICATION  
Light-duty ————— Unimproved dirt =====

GOthic, COLO.  
NW/4 CRESTED BUTTE 15' QUADRANGLE  
N8352.5—W10652.5/7.5

1961  
AMS 4661 IV NW—SERIES V877