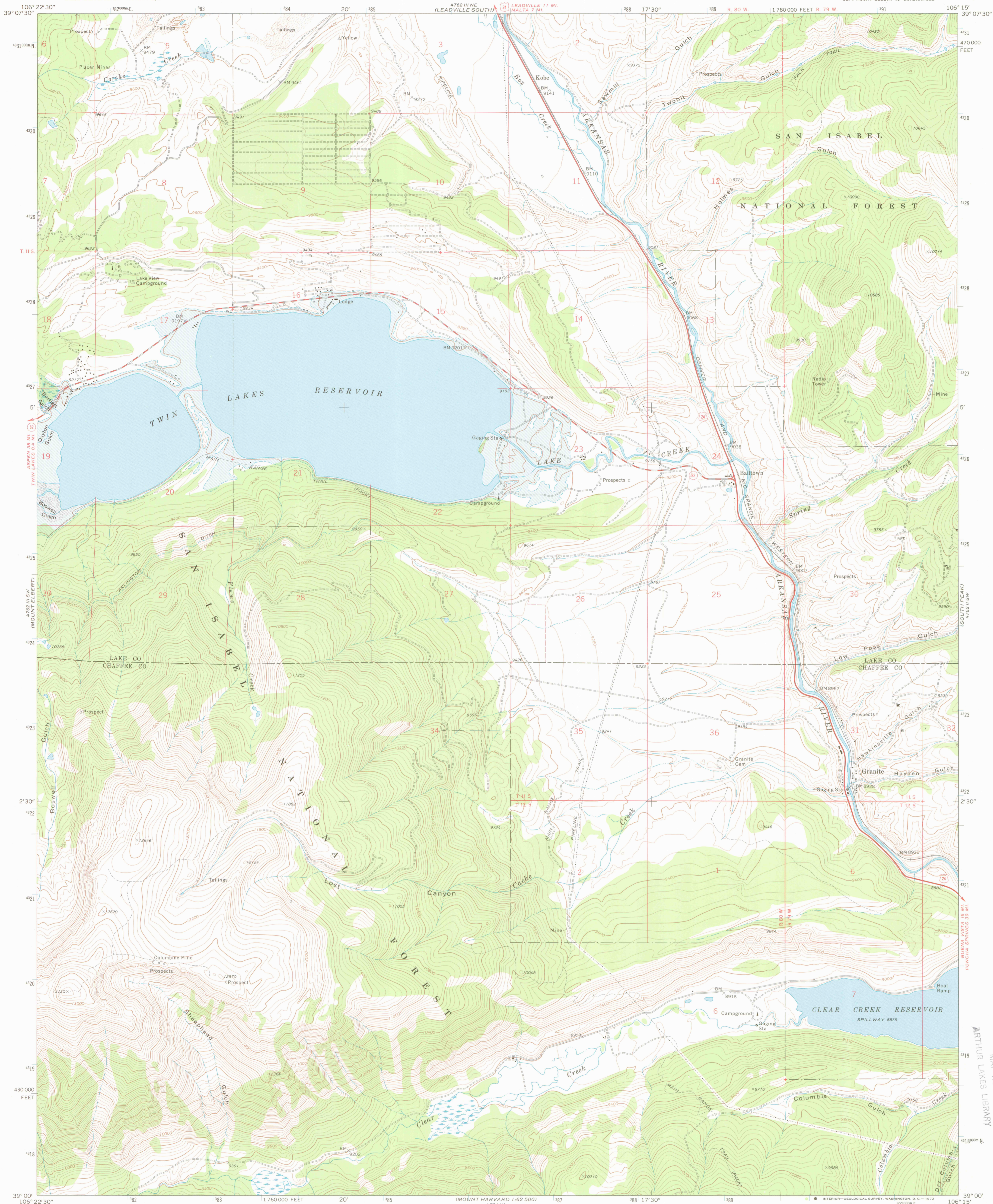
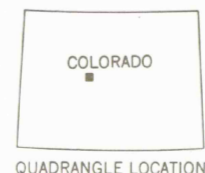
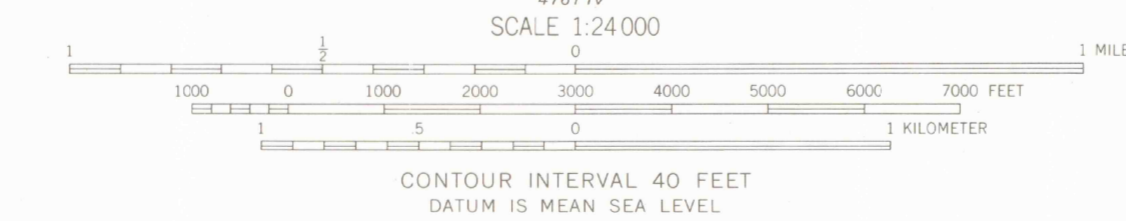
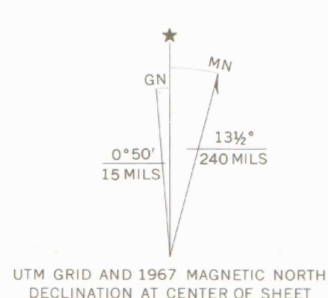


UNITED STATES
DEPARTMENT OF THE INTERIOR
GEOLOGICAL SURVEY

GRANITE QUADRANGLE
COLORADO
7.5 MINUTE SERIES (TOPOGRAPHIC)



Mapped, edited, and published by the Geological Survey
Control by USGS, USC&GS, and U. S. Bureau of Reclamation
Topography by photogrammetric methods from aerial
photographs taken 1966. Field checked 1967
Polyconic projection. 1927 North American datum
10,000-foot grid based on Colorado coordinate system,
central zone
1000-meter Universal Transverse Mercator grid ticks,
zone 13, shown in blue
Fine red dashed lines indicate selected fence lines
Certain land lines are omitted because of insufficient data
Blue hatching indicates areas to be submerged by
Twin Lakes Reservoir at elevation 9208 feet



ROAD CLASSIFICATION
Heavy-duty ——— Light-duty ———
Medium-duty ——— Unimproved dirt ———
U.S. Route ——— State Route ———

GRANITE, COLO.
SE 1/4 MOUNT ELBERT 15' QUADRANGLE
N3900-W10615/7.5

1967

AMS 4762 III SE—SERIES V877
LIBRARY USE ONLY

MAR 27 1980
MAP ROOM
ARTHUR LAKES LIBRARY
OFFICE COPY