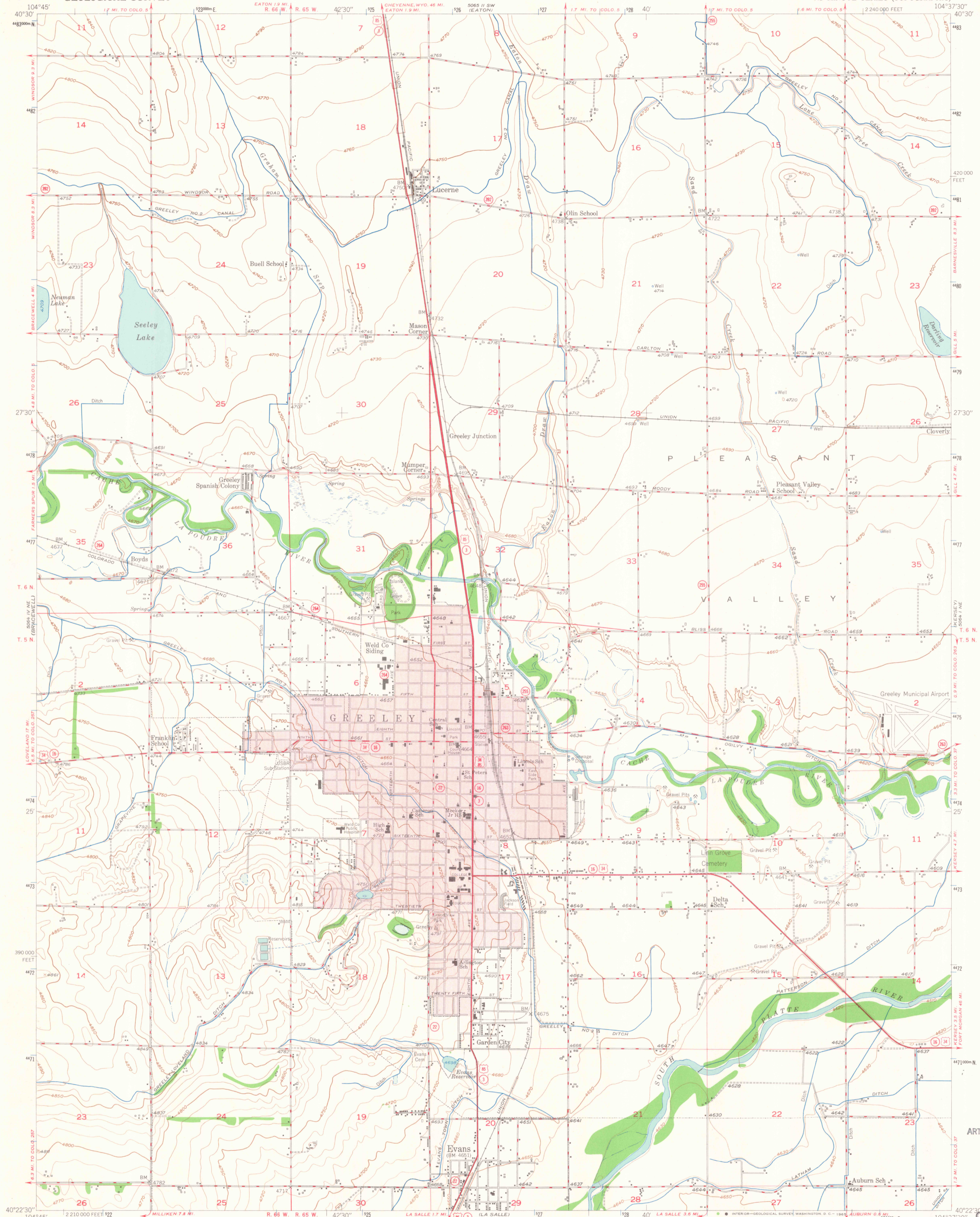
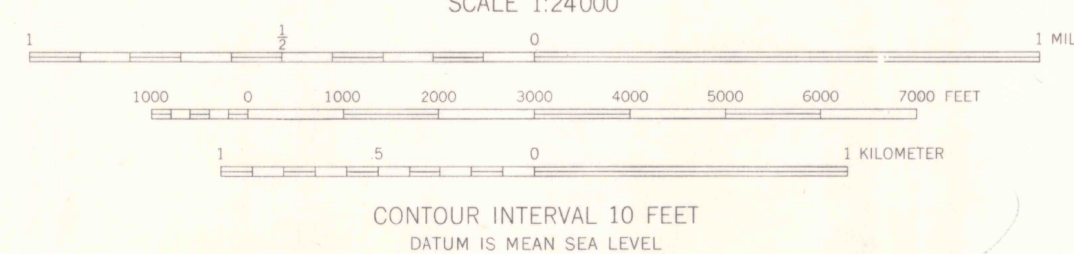
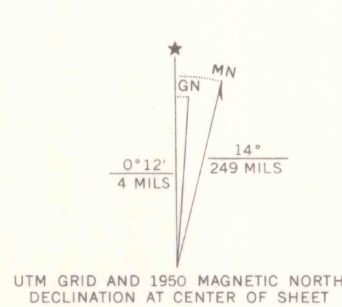


UNITED STATES
DEPARTMENT OF THE INTERIOR
GEOLOGICAL SURVEY

GREELEY QUADRANGLE
COLORADO-WELD CO.
7.5 MINUTE SERIES (TOPOGRAPHIC)



Mapped, edited, and published by the Geological Survey
as part of the Department of the Interior program
for the development of the Missouri River Basin
Control by USGS and USC&GS
Culture and drainage in part compiled from
aerial photographs taken October 1948
Topography by plane-table methods 1949-1950
Polyconic projection. 1927 North American datum
10,000-foot grid based on Colorado coordinate system,
north zone
Red tint indicates area in which only
landmark buildings are shown
Land lines omitted in urban area
1000-meter Universal Transverse Mercator grid ticks,
zone 13, shown in blue



THIS MAP COMPLIES WITH NATIONAL MAP ACCURACY STANDARDS
FOR SALE BY U.S. GEOLOGICAL SURVEY, DENVER 25, COLORADO OR WASHINGTON 25, D.C.
A FOLDER DESCRIBING TOPOGRAPHIC MAPS AND SYMBOLS IS AVAILABLE ON REQUEST

ROAD CLASSIFICATION
HARD-SURFACE ALL WEATHER ROADS
Heavy-duty ——— **LANE ISLAND**
Medium-duty ——— **LANE ISLAND**
Loose-surface, graded, or narrow hard-surface ———
U. S. Route
State Route
DRY WEATHER ROADS
Improved dirt ———
Unimproved dirt ———
BYU LIBRARY
Greeley, CO.
N4022.5-W10437.5/7.5
1950
AMS 5064 1 NW—SERIES V877

MAY 10 1983
MAP ROOM
ARTHUR LAKES LIBRARY

OFFICE COPY
Greeley 3701
1950 G C222
s24
U5
C222
s24
U5