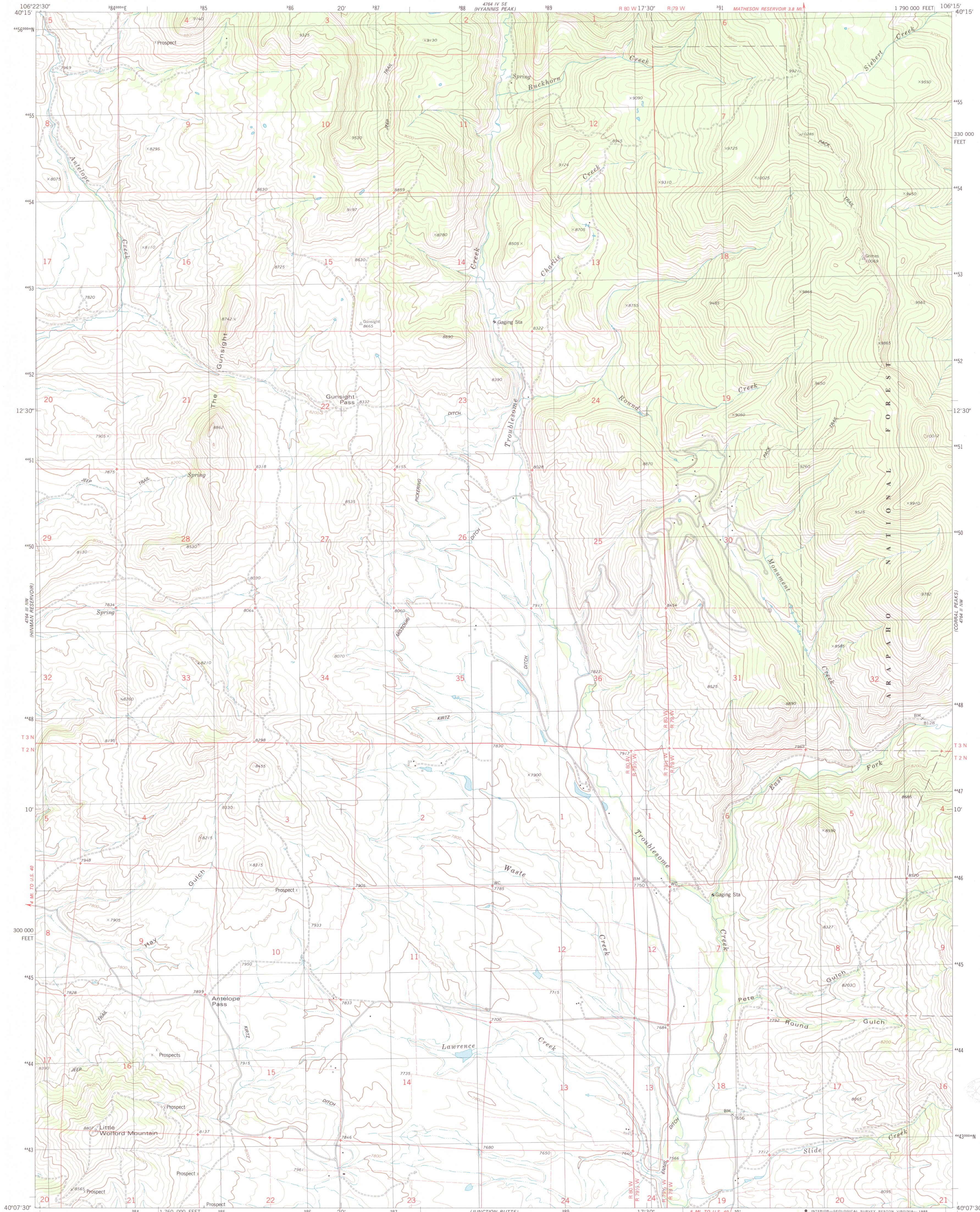


UNITED STATES
DEPARTMENT OF THE INTERIOR
GEOLOGICAL SURVEY

GUNSIGHT PASS QUADRANGLE
COLORADO—GRAND CO.
7.5 MINUTE SERIES (TOPOGRAPHIC)

NE/4 KREMMLING 15' QUADRANGLE

1 790 000 FEET



Mapped, edited, and published by the Geological Survey

Control by USGS and NOS/NOAA

Topography by photogrammetric methods from aerial photographs taken 1975. Field checked 1976. Map edited 1980

Projection and 10,000-foot grid ticks: Colorado coordinate system, north zone (Lambert conformal conic)

1000-meter Universal Transverse Mercator grid, zone 13

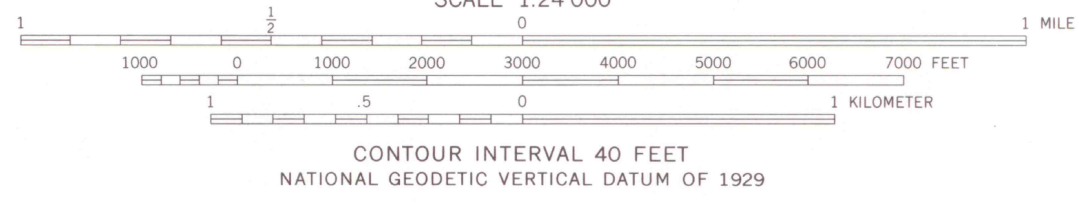
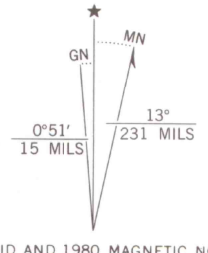
1927 North American Datum

To place on the predicted North American Datum 1983 move the projection lines 6 meters north and 51 meters east as shown by dashed corner ticks

Fine red dashed lines indicate selected fence lines

Certain land lines are omitted because of insufficient data

There may be private inholdings within the boundaries of the National or State reservations shown on this map



ROAD CLASSIFICATION	
Primary highway, hard surface	Light-duty road, hard or improved surface
Secondary highway, hard surface	Unimproved road
Interstate Route	U.S. Route
	State Route

GUNSIGHT PASS, COLO.

NE/4 KREMMLING 15' QUADRANGLE
40106-B3-TF-024

1980

DMA 4764 III NE—SERIES V877

THIS MAP COMPLIES WITH NATIONAL MAP ACCURACY STANDARDS
FOR SALE BY U.S. GEOLOGICAL SURVEY, DENVER, COLORADO 80225, OR RESTON, VIRGINIA 22092
A FOLDER DESCRIBING TOPOGRAPHIC MAPS AND SYMBOLS IS AVAILABLE ON REQUEST

G 3700
s24
.G4
MAP ROOM