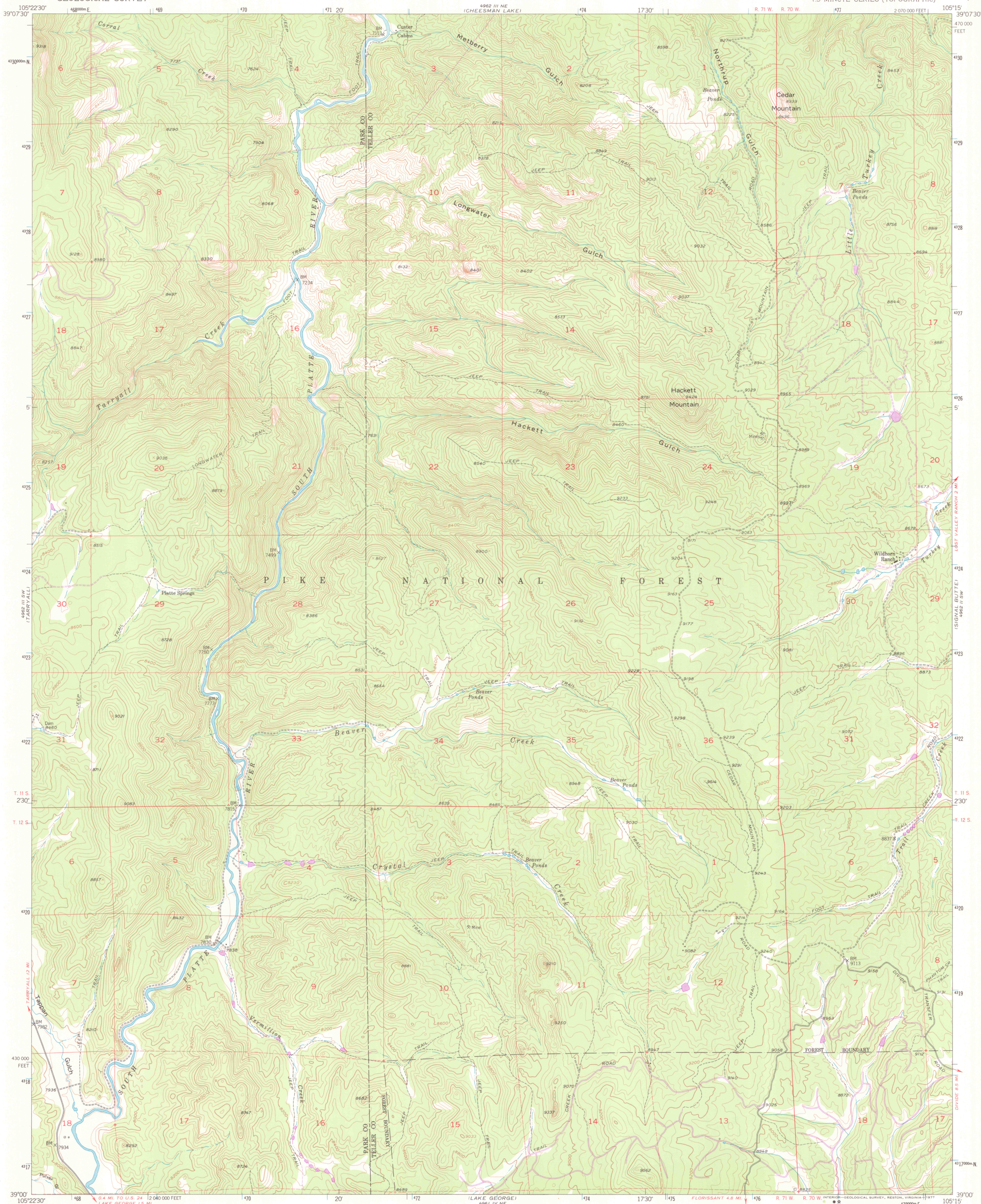


UNITED STATES  
DEPARTMENT OF THE INTERIOR  
GEOLOGICAL SURVEY

HACKETT MOUNTAIN QUADRANGLE  
COLORADO  
7.5 MINUTE SERIES (TOPOGRAPHIC)



Maped, edited, and published by the Geological Survey as part of the Department of the Interior program for the development of the Missouri River Basin Control by USGS and NOS/NOAA  
Topography from aerial photographs by multiplex methods  
Aerial photographs taken 1953. Field check 1956  
Polyconic projection. 1927 North American datum  
10,000-foot grid based on Colorado coordinate system, central zone  
1000-meter Universal Transverse Mercator grid ticks, zone 13, shown in blue  
Dashed land lines indicate approximate locations  
Unchecked elevations are shown in brown

Revisions shown in purple compiled from aerial photographs taken 1975. This information not field checked

THIS MAP COMPLIES WITH NATIONAL MAP ACCURACY STANDARDS  
FOR SALE BY U.S. GEOLOGICAL SURVEY, DENVER, COLORADO 80225, OR RESTON, VIRGINIA 22092  
A FOLDER DESCRIBING TOPOGRAPHIC MAPS AND SYMBOLS IS AVAILABLE ON REQUEST

COLORADO  
QUADRANGLE LOCATION

ROAD CLASSIFICATION  
Light-duty ————— Unimproved dirt —————  
HACKETT MOUNTAIN, COLO.  
N3900-W10515/7.5

1956  
PHOTOREVISED 1975  
AMS 4962 III SE-SERIES V877

ARTHUR LAKES LIBRARY  
COLORADO SCHOOL OF MINES  
GOLDEN, COLORADO

OFFICE COPY