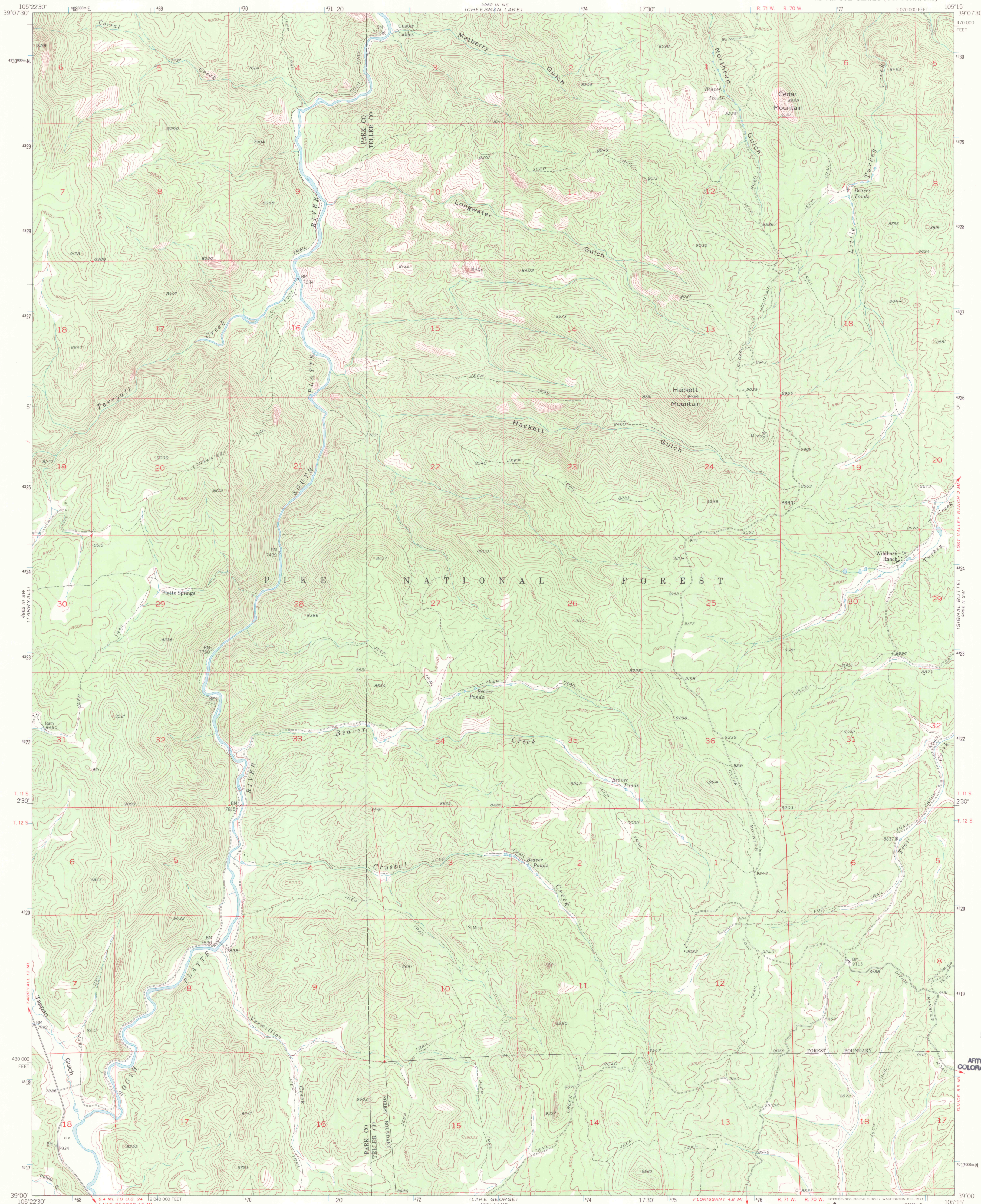


UNITED STATES
DEPARTMENT OF THE INTERIOR
GEOLOGICAL SURVEY

HACKETT MOUNTAIN QUADRANGLE
COLORADO
7.5 MINUTE SERIES (TOPOGRAPHIC)

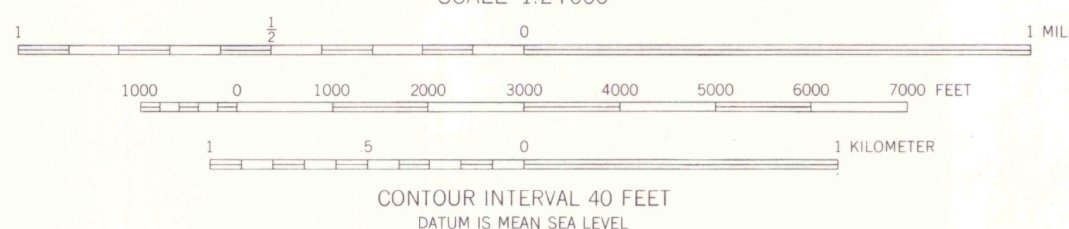
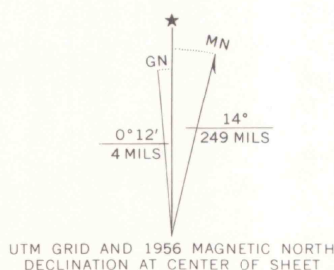


Mapped, edited, and published by the Geological Survey
as part of the Department of the Interior program
for the development of the Missouri River Basin
Control by USGS and USC&GS

Topography from aerial photographs by multiplex methods
Aerial photographs taken 1953. Field check 1956

Polyconic projection. 1927 North American datum
10,000-foot grid based on Colorado coordinate system,
central zone
1000-meter Universal Transverse Mercator grid ticks,
zone 13, shown in blue

Dashed land lines indicate approximate locations
Unchecked elevations are shown in brown



ROAD CLASSIFICATION
Light-duty ————— Unimproved dirt —————

HACKETT MOUNTAIN, COLO.
N3900-W10515/7.5

1956

AMS 4962 III SE-SERIES V877



MAY 27 1998

MAP ROOM
ARTHUR LAKES LIBRARY
COLORADO SCHOOL OF MINES

G 3700
s24
.G4
MAP ROOM

