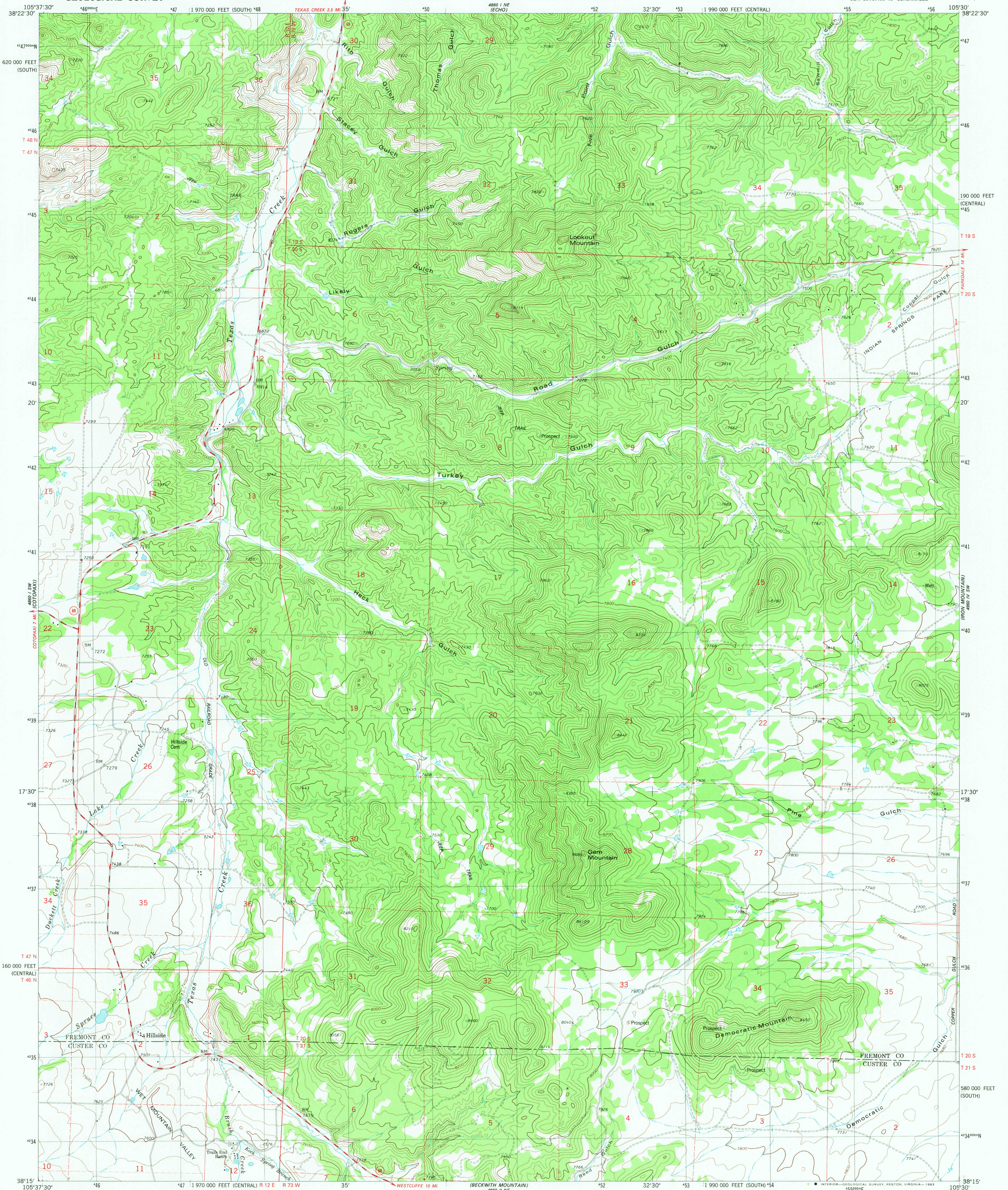


UNITED STATES  
DEPARTMENT OF THE INTERIOR  
GEOLOGICAL SURVEY

HILLSIDE QUADRANGLE  
COLORADO  
7.5 MINUTE SERIES (TOPOGRAPHIC)



Mapped, edited, and published by the Geological Survey

Control by USGS and NOS/NOAA

Topography by photogrammetric methods from aerial photographs  
taken 1975. Field checked 1976. Map edited 1980

Projection: Colorado coordinate system, central zone  
(Lambert conformal conic)

10,000-foot grid ticks based on Colorado coordinate system,  
central and south zones

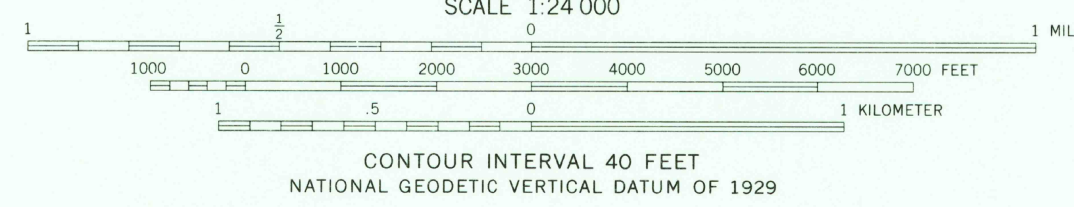
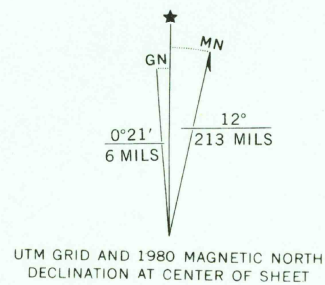
1000-meter Universal Transverse Mercator grid, zone 13

1927 North American datum

To place on the predicted North American Datum 1983  
move the projection lines 3 meters north and  
49 meters east as shown by dashed corner ticks

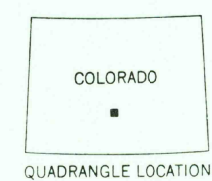
Fine red dashed lines indicate selected fence lines

Certain land lines are omitted because of insufficient data



THIS MAP COMPLIES WITH NATIONAL MAP ACCURACY STANDARDS  
FOR SALE BY U. S. GEOLOGICAL SURVEY, DENVER, COLORADO 80225, OR RESTON, VIRGINIA 22092  
A FOLDER DESCRIBING TOPOGRAPHIC MAPS AND SYMBOLS IS AVAILABLE ON REQUEST

ROAD CLASSIFICATION	
Primary highway, hard surface	Light-duty road, hard or improved surface
Secondary highway, hard surface	Unimproved road
Interstate Route	U. S. Route
	State Route



HILLSIDE COLO.  
SE 1/4 COTOPAXI 15' QUADRANGLE  
N3815-W10530/7.5

1980

DMA 4860 I SE-SERIES V877