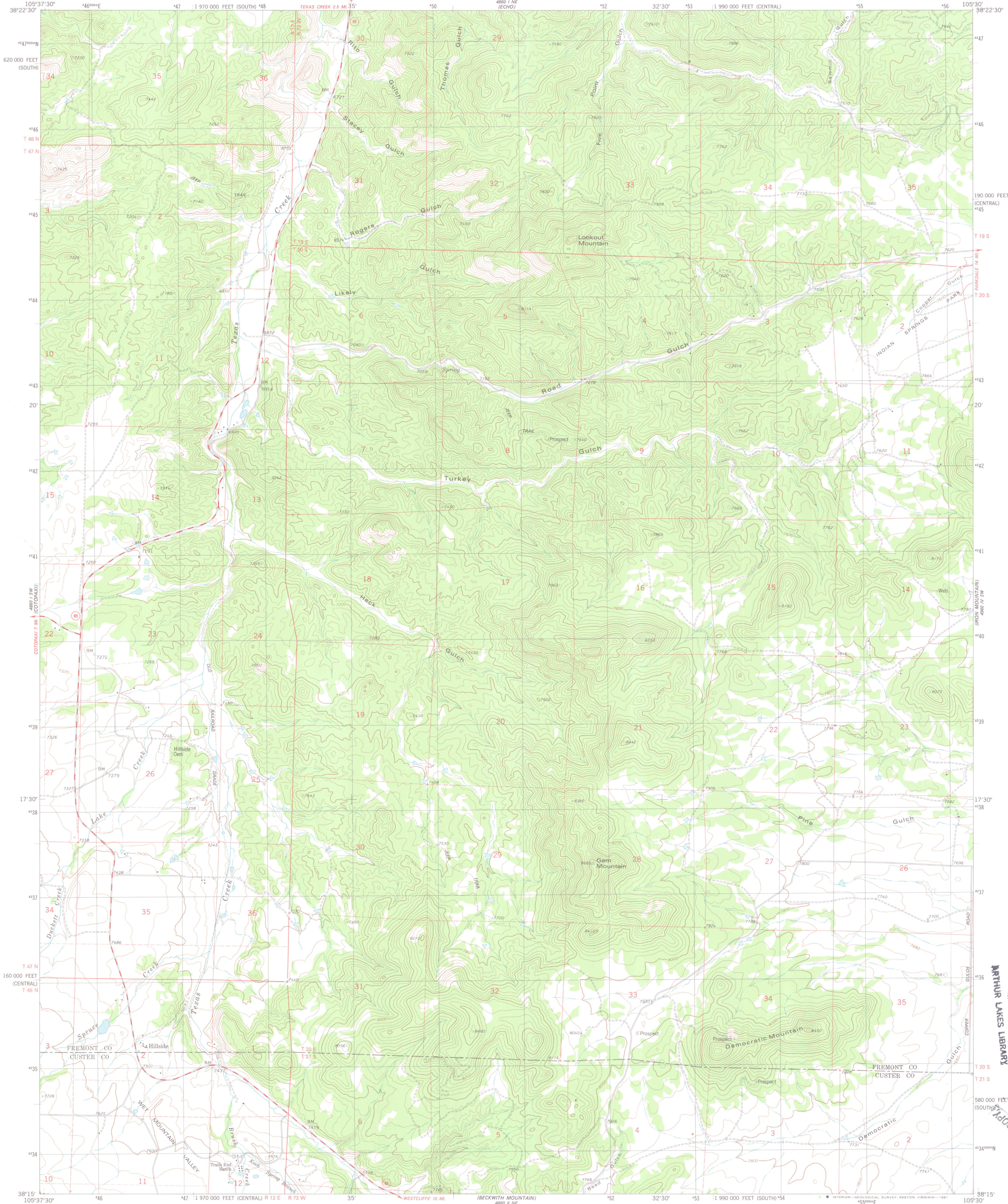


UNITED STATES
DEPARTMENT OF THE INTERIOR
GEOLOGICAL SURVEY

HILLSIDE QUADRANGLE
COLORADO
7.5 MINUTE SERIES (TOPOGRAPHIC)
SE/4 COTOPAXI 15' QUADRANGLE



Mapped, edited, and published by the Geological Survey

Control by USGS and NOS/NOAA

Topography by photogrammetric methods from aerial photographs taken 1975. Field checked 1976. Map edited 1980

Projection: Colorado coordinate system, central zone (Lambert conformal conic)

10,000-foot grid ticks based on Colorado coordinate system, central and south zones

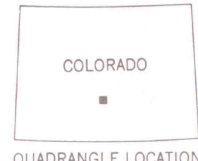
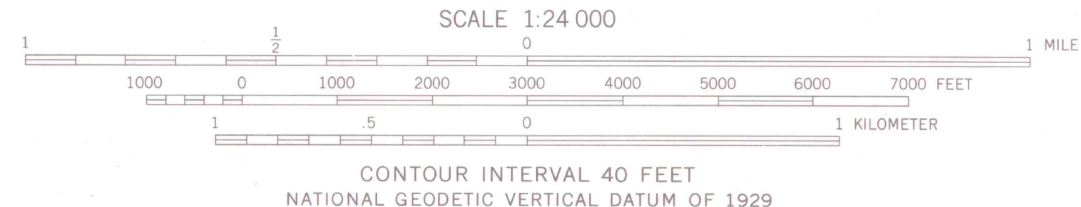
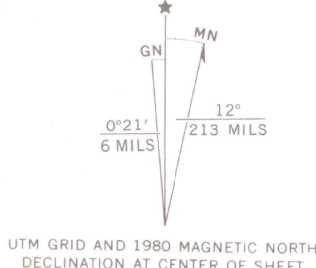
1000-meter Universal Transverse Mercator grid, zone 13

1927 North American datum

To place on the predicted North American Datum 1983 move the projection lines 3 meters north and 49 meters east as shown by dashed corner ticks

Fine red dashed lines indicate selected fence lines

Certain land lines are omitted because of insufficient data



ROAD CLASSIFICATION	
Primary highway, hard surface	Light-duty road, hard or improved surface
Secondary highway, hard surface	Unimproved road
Interstate Route	U. S. Route
	State Route

HILLSIDE COLO.
SE/4 COTOPAXI 15' QUADRANGLE
N3815-W10530/7.5

1980

DMA 4860 I SE-SERIES V877

JUL 1 4 1981
MAP ROOM
ARTHUR LAKES LIBRARY

OFFICE COPY
JUL 1 4 1981
MAP ROOM
ARTHUR LAKES LIBRARY

LIBRARY USE ONLY