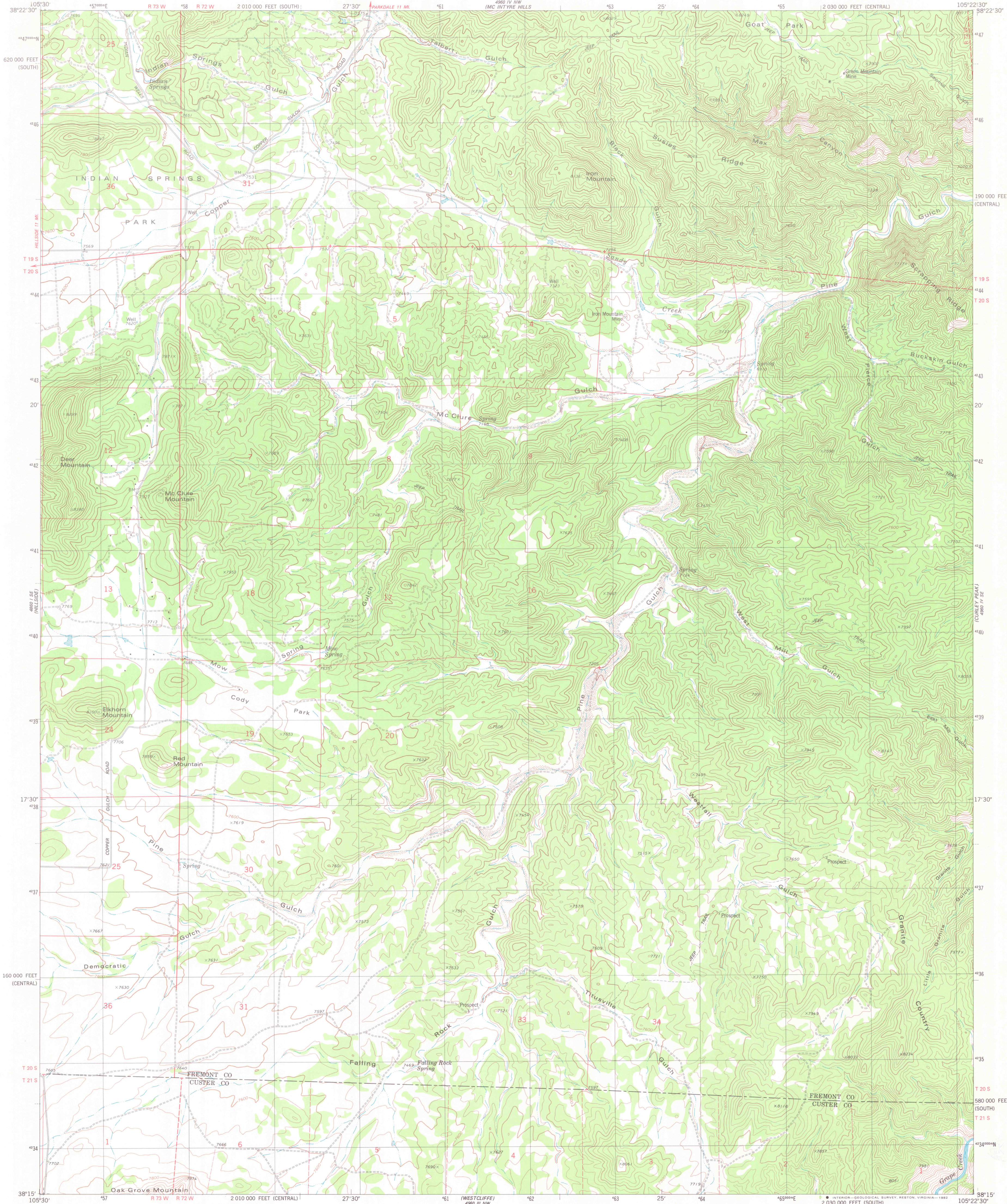
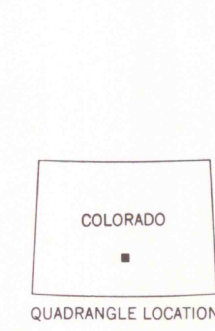
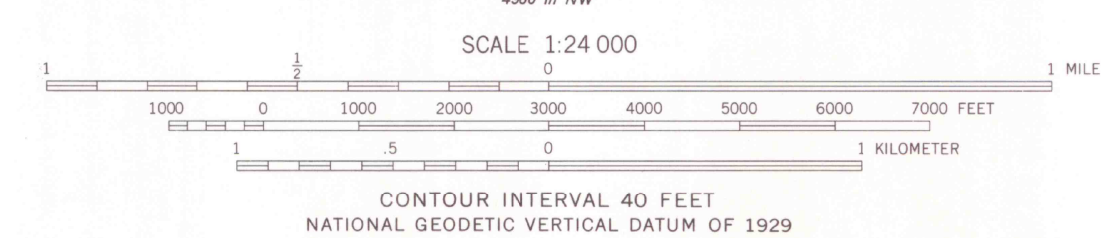
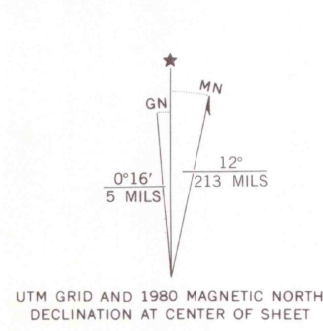


UNITED STATES  
DEPARTMENT OF THE INTERIOR  
GEOLOGICAL SURVEY

IRON MOUNTAIN QUADRANGLE  
COLORADO  
7.5 MINUTE SERIES (TOPOGRAPHIC)  
SW/4 ROYAL GORGE 15' QUADRANGLE



Mapped, edited, and published by the Geological Survey  
Control by USGS and NOS/NOAA  
Topography by photogrammetric methods from aerial photographs  
taken 1975. Field checked 1976. Map edited 1980  
Projection: Colorado coordinate system, central zone  
(Lambert conformal conic)  
10,000-foot grid ticks based on Colorado coordinate  
system, central and south zones  
1000-meter Universal Transverse Mercator grid, zone 13  
1927 North American datum  
To place on the predicted North American Datum 1983  
move the projection lines 3 meters north and  
49 meters east as shown by dashed corner ticks  
Fine red dashed lines indicate selected fence lines  
Certain land lines are omitted because of  
insufficient data



ROAD CLASSIFICATION	
Primary highway, hard surface	Light-duty road, hard or improved surface
Secondary highway, hard surface	Unimproved road
Interstate Route	U. S. Route
	State Route

IRON MOUNTAIN, COLO.  
SW/4 ROYAL GORGE 15' QUADRANGLE  
N3815-W10522.5/7.5

1980

DMA 4960 IV SW-SERIES V877