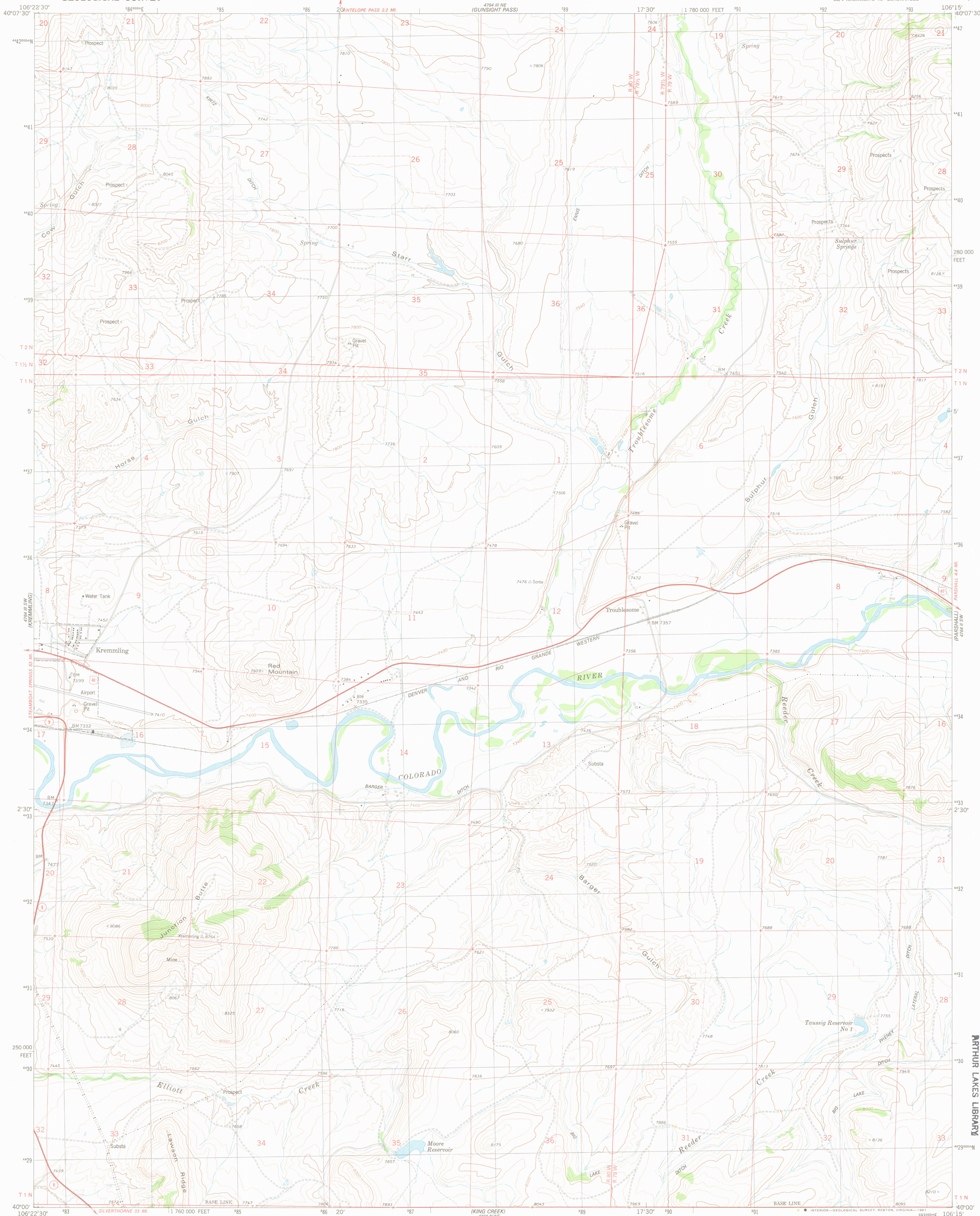


UNITED STATES
DEPARTMENT OF THE INTERIOR
GEOLOGICAL SURVEY

JUNCTION BUTTE QUADRANGLE
COLORADO—GRAND CO.
7.5 MINUTE SERIES (TOPOGRAPHIC)
SE/4 KREMMLING 15' QUADRANGLE



Mapped, edited, and published by the Geological Survey

Control by USGS and NOS/NOAA

Topography by photogrammetric methods from aerial photographs taken 1975. Field checked 1976. Map edited 1980

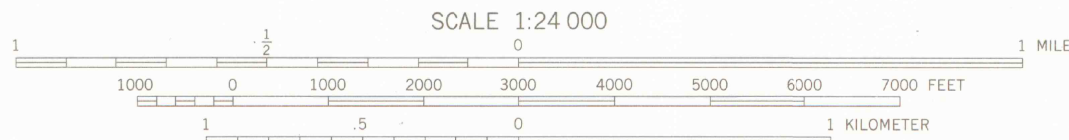
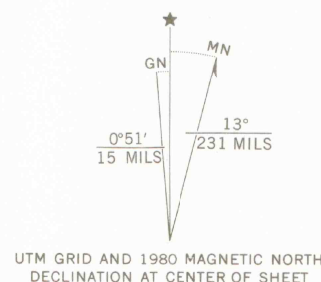
Projection and 10,000-foot grid ticks. Colorado coordinate system, north zone (Lambert conformal conic)

1000-meter Universal Transverse Mercator grid, zone 13

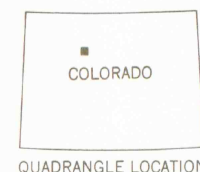
1927 North American datum

To place on the predicted North American Datum 1983 move the projection lines 6 meters north and 51 meters east as shown by dashed corner ticks

Fine red dashed lines indicate selected fence lines



CONTOUR INTERVAL 40 FEET
DOTTED LINES REPRESENT 20-FOOT CONTOURS
NATIONAL GEODETIC VERTICAL DATUM OF 1929



ROAD CLASSIFICATION	
Primary highway, hard surface	Light-duty road, hard or improved surface
Secondary highway, hard surface	Unimproved road
Interstate Route	U. S. Route
	State Route

JUNCTION BUTTE, COLO.
SE/4 KREMMLING 15' QUADRANGLE
N4000-W10615/7.5

1980

DMA 4764 III SE-SERIES V877

LIBRARY USE ONLY