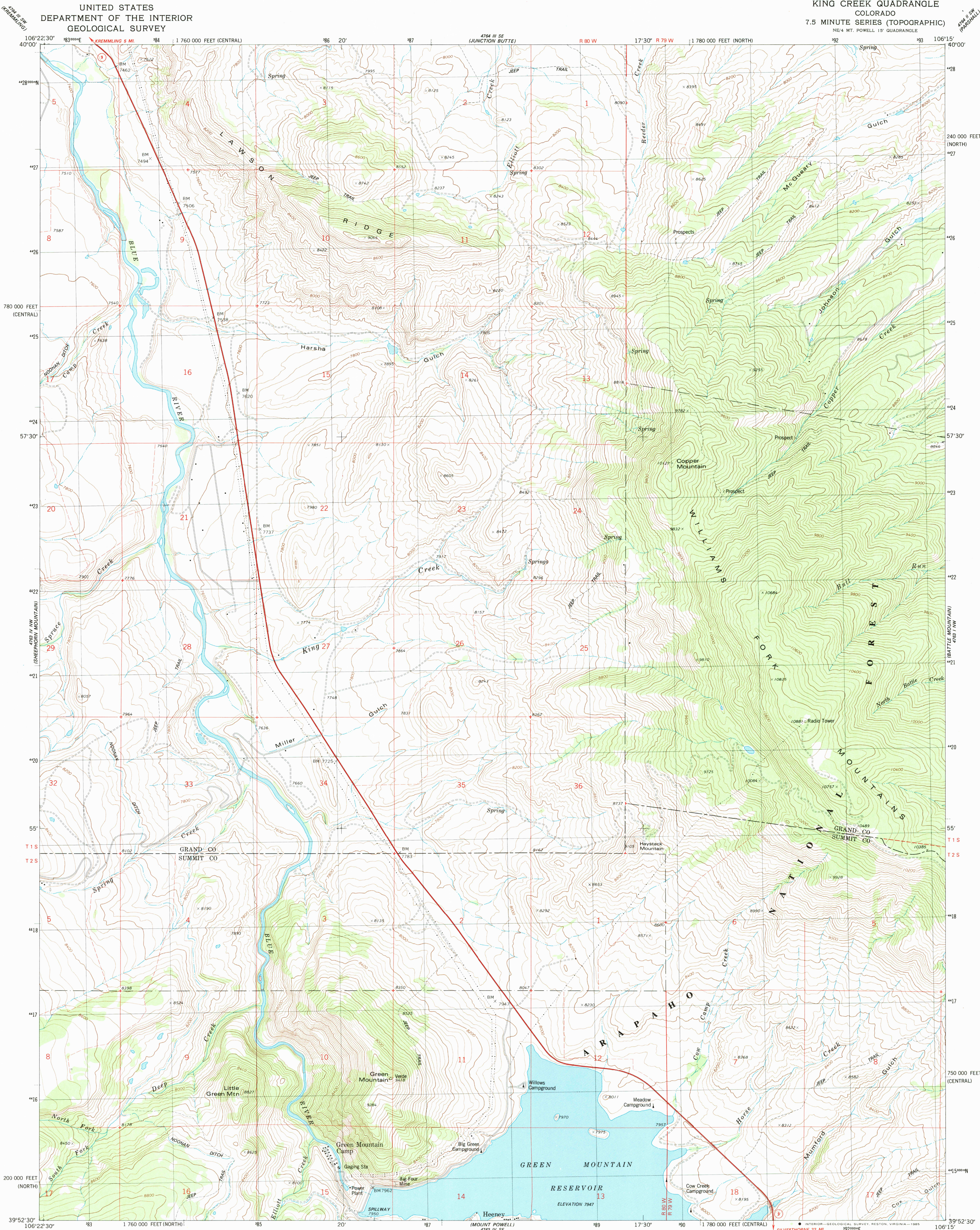


UNITED STATES
DEPARTMENT OF THE INTERIOR
GEOLOGICAL SURVEY

KING CREEK QUADRANGLE
COLORADO
7.5 MINUTE SERIES (TOPOGRAPHIC)
NE/4 MT. POWELL 15' QUADRANGLE



Mapped, edited, and published by the Geological Survey

Control by USGS, NOS/NOAA, and U.S. Forest Service

Topography by photogrammetric methods from aerial photographs taken 1975. Field checked 1976. Map edited 1980

Projection: Colorado coordinate system, north zone (Lambert conformal conic)

10,000-foot grid ticks based on Colorado coordinate system, north and central zones

1000-meter Universal Transverse Mercator grid, zone 13

1927 North American Datum

To place on the predicted North American Datum 1983

move the projection lines 6 meters north and

51 meters east as shown by dashed corner ticks

Fine red dashed lines indicate selected fence lines

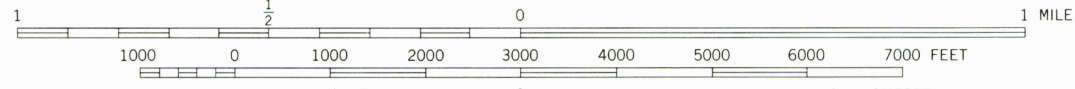
Where omitted, land lines have not been established

or are not shown because of insufficient data

There may be private inholdings within the boundaries of the

National or State reservations shown on this map

SCALE 1:24 000



CONTOUR INTERVAL 40 FEET

NATIONAL GEODETIC VERTICAL DATUM OF 1929

THIS MAP COMPLIES WITH NATIONAL MAP ACCURACY STANDARDS

FOR SALE BY U.S. GEOLOGICAL SURVEY, DENVER, COLORADO 80225, OR RESTON, VIRGINIA 22092

A FOLDER DESCRIBING TOPOGRAPHIC MAPS AND SYMBOLS IS AVAILABLE ON REQUEST

ROAD CLASSIFICATION

- Primary highway, hard surface
- Secondary highway, hard surface
- Light-duty road, hard or improved surface
- Unimproved road
- Interstate Route
- U.S. Route
- State Route



KING CREEK, COLO.

NE/4 MT. POWELL 15' QUADRANGLE

39106-H3-TF-024

1980

DMA 4763 IV NE-SERIES V877

