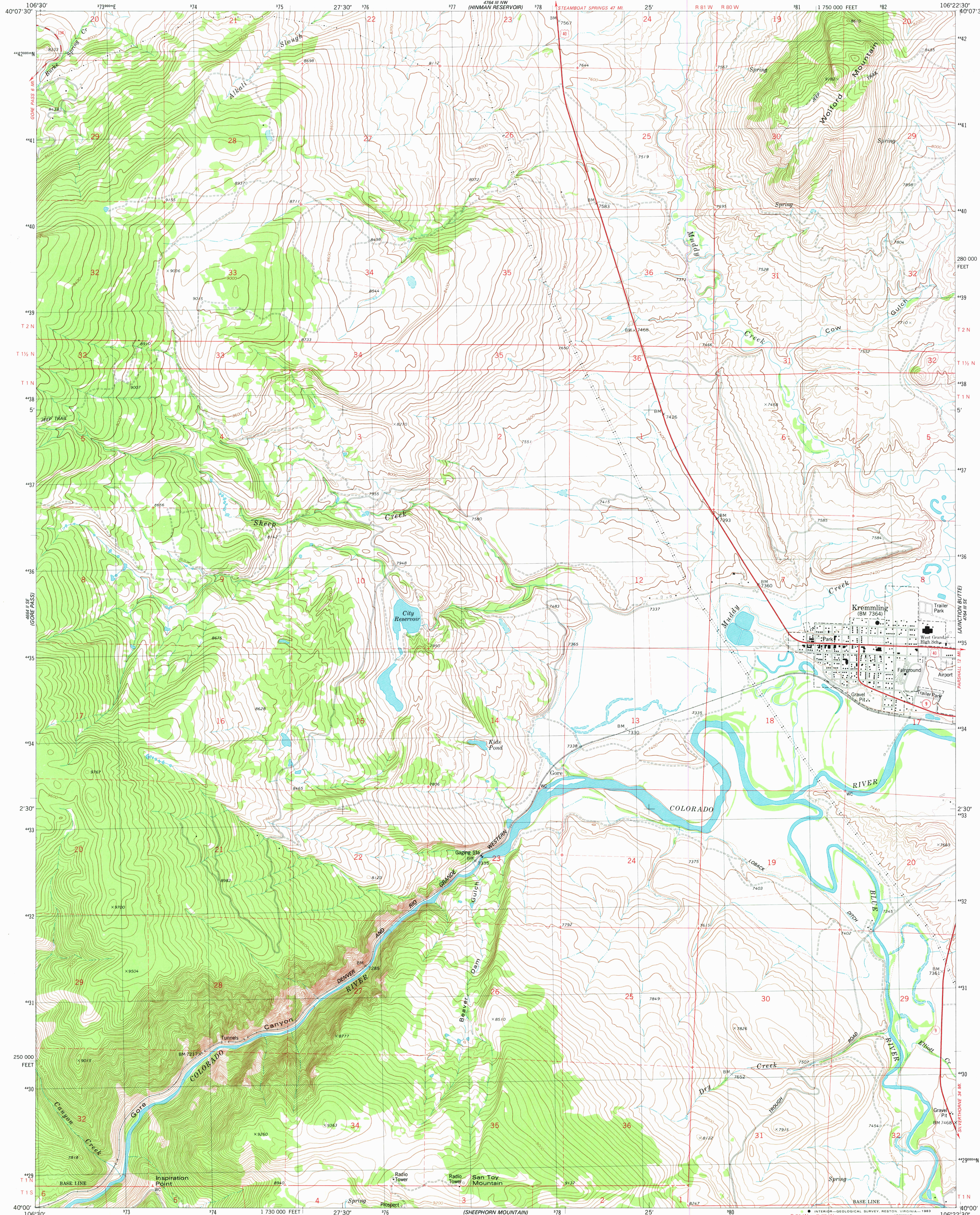


UNITED STATES
DEPARTMENT OF THE INTERIOR
GEOLOGICAL SURVEY

KREMMLING QUADRANGLE
COLORADO—GRAND CO.
7.5 MINUTE SERIES (TOPOGRAPHIC)
SW/4 KREMMLING 15' QUADRANGLE



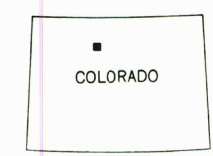
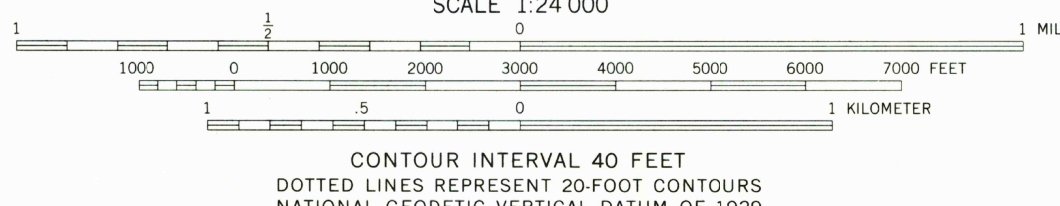
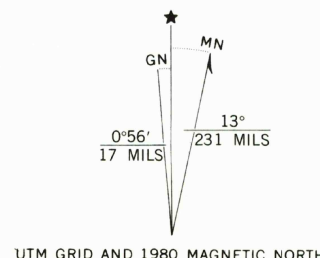
Mapped, edited, and published by the Geological Survey

Control by USGS and NOS/NOAA
Topography by photogrammetric methods from aerial photographs
taken 1975. Field checked 1976. Map edited 1981

Projection and 10,000-foot grid ticks: Colorado
coordinate system, north zone (Lambert conformal conic)
1000-meter Universal Transverse Mercator grid, zone 13
1927 North American datum

To place on the predicted North American Datum 1983
move the projection lines 6 meters north and
51 meters east as shown by dashed corner ticks

Fine red dashed lines indicate selected fence lines



ROAD CLASSIFICATION	
Primary highway, hard surface	Light-duty road, hard or improved surface
Secondary highway, hard surface	Unimproved road
Interstate Route	U.S. Route
	State Route

KREMMLING, COLO.
SW/4 KREMMLING 15' QUADRANGLE
N4000-W10622.5/7.5

1981

DMA 4764 III SW—SERIES V877

THIS MAP COMPLIES WITH NATIONAL MAP ACCURACY STANDARDS
FOR SALE BY U.S. GEOLOGICAL SURVEY, DENVER, COLORADO 80225, OR RESTON, VIRGINIA 22092
A FOLDER DESCRIBING TOPOGRAPHIC MAPS AND SYMBOLS IS AVAILABLE ON REQUEST