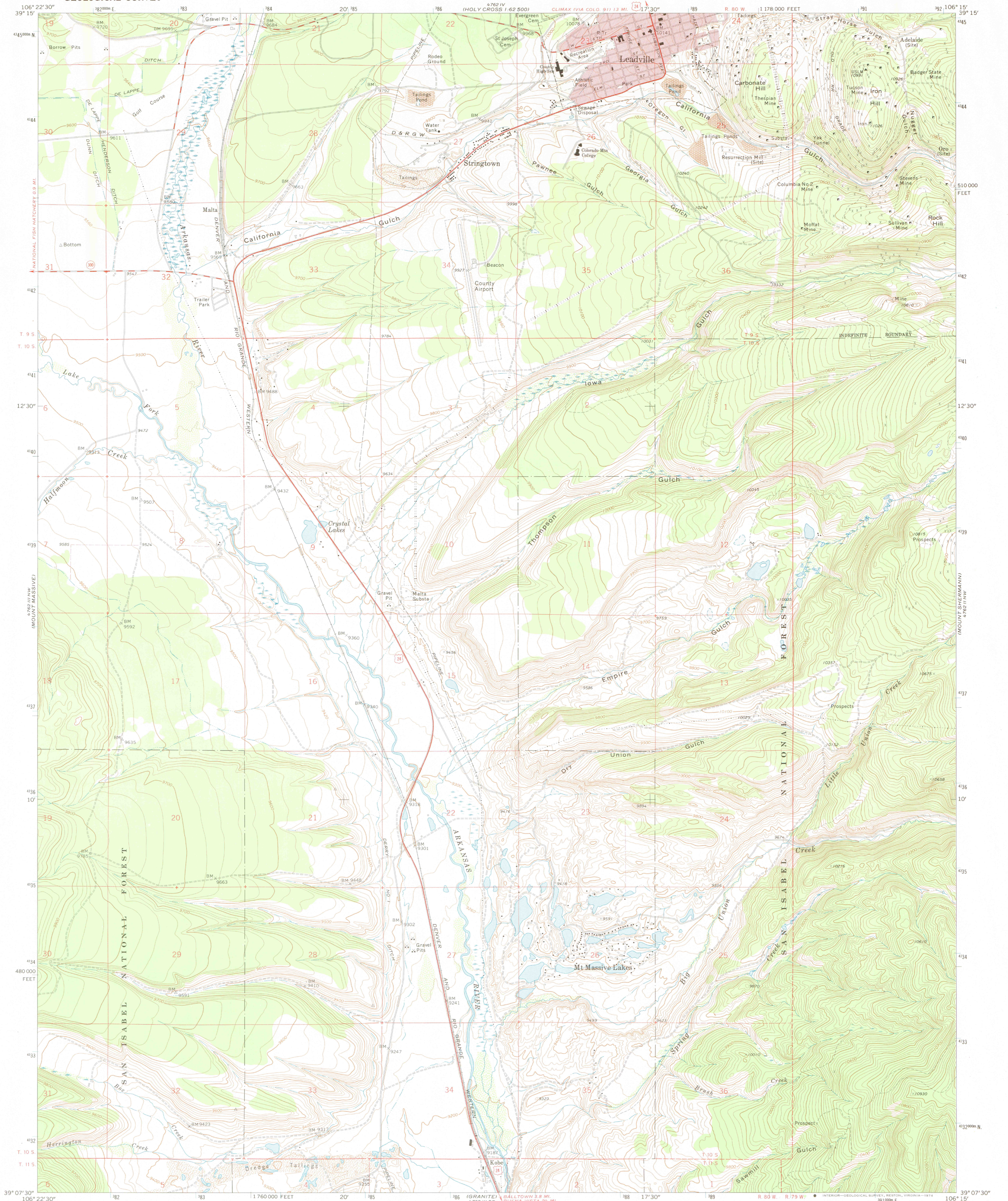


UNITED STATES
DEPARTMENT OF THE INTERIOR
GEOLOGICAL SURVEY

LEADVILLE SOUTH QUADRANGLE
COLORADO—LAKE CO.
7.5 MINUTE SERIES (TOPOGRAPHIC)



Mapped, edited, and published by the Geological Survey

Control by USGS, USC&GS, and Bureau of Reclamation

Topography by photogrammetric methods from aerial

photographs taken 1964. Field checked 1969

Polyconic projection. 1927 North American datum

10,000-foot grid based on Colorado coordinate system,

central zone 1000-meter Universal Transverse Mercator grid ticks,

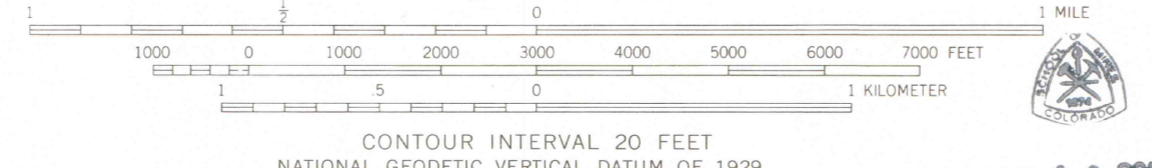
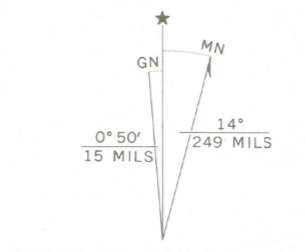
zone 13, shown in blue

Red tint indicates areas in which only landmark buildings are shown

Fine red dashed lines indicate selected fence lines

Where omitted, land lines have not been established or are

not shown because of insufficient data



JAN 19 2006

MAP ROOM
ARTHUR LAKES LIBRARY
COLORADO SCHOOL OF MINES

THIS MAP COMPLIES WITH NATIONAL MAP ACCURACY STANDARDS
FOR SALE BY U.S. GEOLOGICAL SURVEY, DENVER, COLORADO 80225, OR RESTON, VIRGINIA 22092

A FOLDER DESCRIBING TOPOGRAPHIC MAPS AND SYMBOLS IS AVAILABLE ON REQUEST

OFFICE COPY
LIBRARY USE ONLY

ROAD CLASSIFICATION
Heavy-duty ——— Light-duty ———
Medium-duty ——— Unimproved dirt ———
U.S. Route ——— State Route ———

LEADVILLE SOUTH, COLO.

N 3907.5—W 10615.7.5

1969

AMS 4762 III NE—SERIES V877

G 3700
s24
G4
MAP ROOM