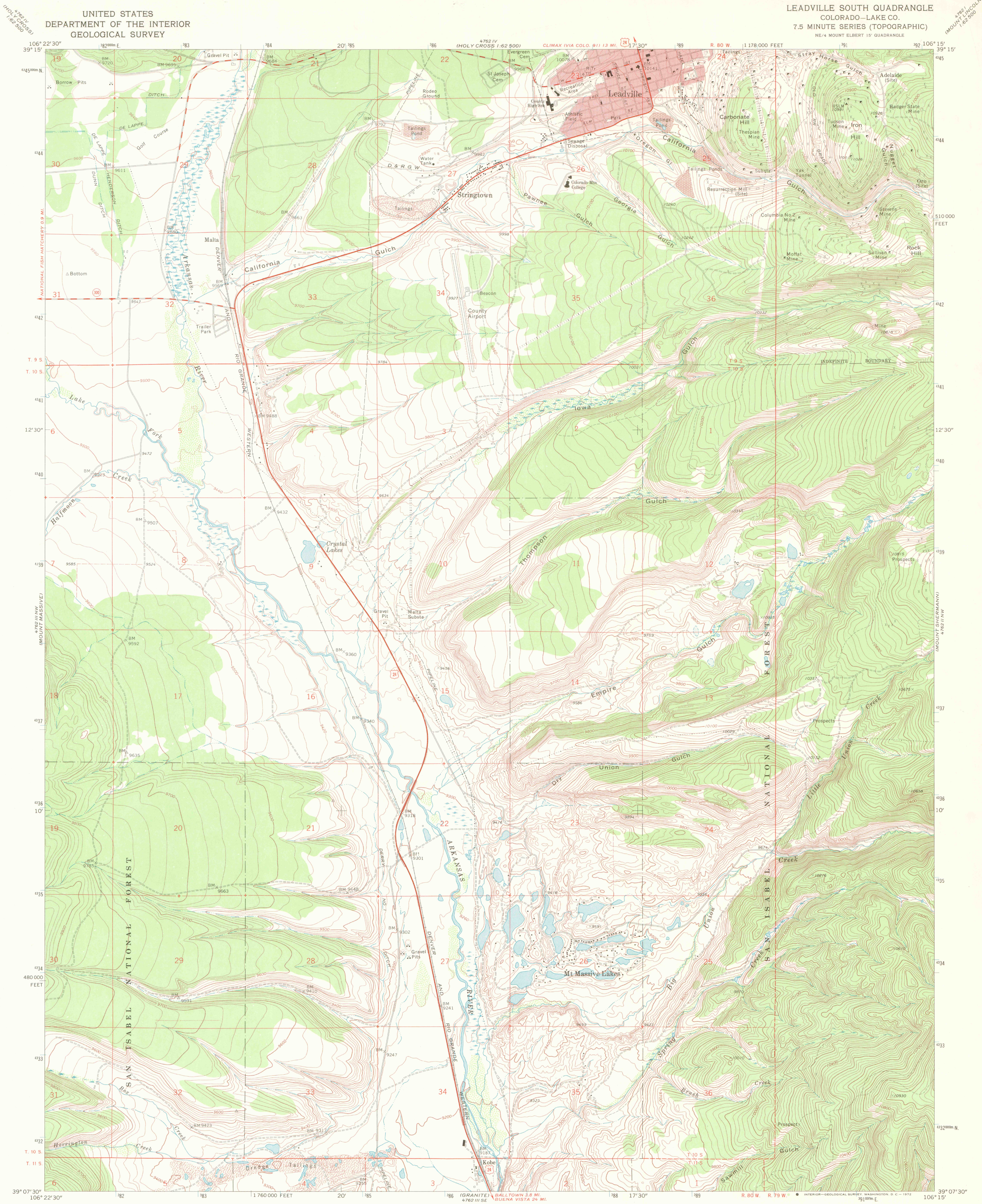


UNITED STATES
DEPARTMENT OF THE INTERIOR
GEOLOGICAL SURVEY

LEADVILLE SOUTH QUADRANGLE
COLORADO—LAKE CO.
7.5 MINUTE SERIES (TOPOGRAPHIC)



Mapped, edited, and published by the Geological Survey

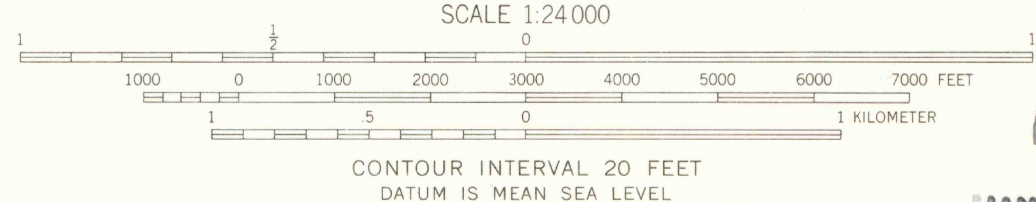
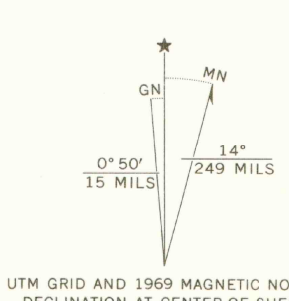
Control by USGS, USC&GS, and Bureau of Reclamation
Topography by photogrammetric methods from aerial
photographs taken 1964. Field checked 1969

Polyconic projection. 1927 North American datum
10,000-foot grid based on Colorado coordinate system,
central zone
1000-meter Universal Transverse Mercator grid ticks,
zone 13, shown in blue

Red tint indicates areas in which only landmark buildings are shown

Fine red dashed lines indicate selected fence lines

Where omitted, land lines have not been established or are
not shown because of insufficient data



JAN 1 9 2006

MAP ROOM
ARTHUR LAKES LIBRARY
COLORADO SCHOOL OF MINES
FOR SALE BY U.S. GEOLOGICAL SURVEY, DENVER, COLORADO 80225, OR WASHINGTON, D.C. 20242
A FOLDER DESCRIBING TOPOGRAPHIC MAPS AND SYMBOLS IS AVAILABLE ON REQUEST

QUADRANGLE LOCATION

ROAD CLASSIFICATION
Heavy-duty ——— Light-duty ———
Medium-duty ——— Unimproved dirt ———
U.S. Route ——— State Route ———

LEADVILLE SOUTH, COLO.
NE 1/4 MOUNT ELBERT 15' QUADRANGLE
N3907.5-W10615/7.5

1969

AMS 4762 III NE—SERIES 7877

OFFICE COPY
LIBRARY USE ONLY