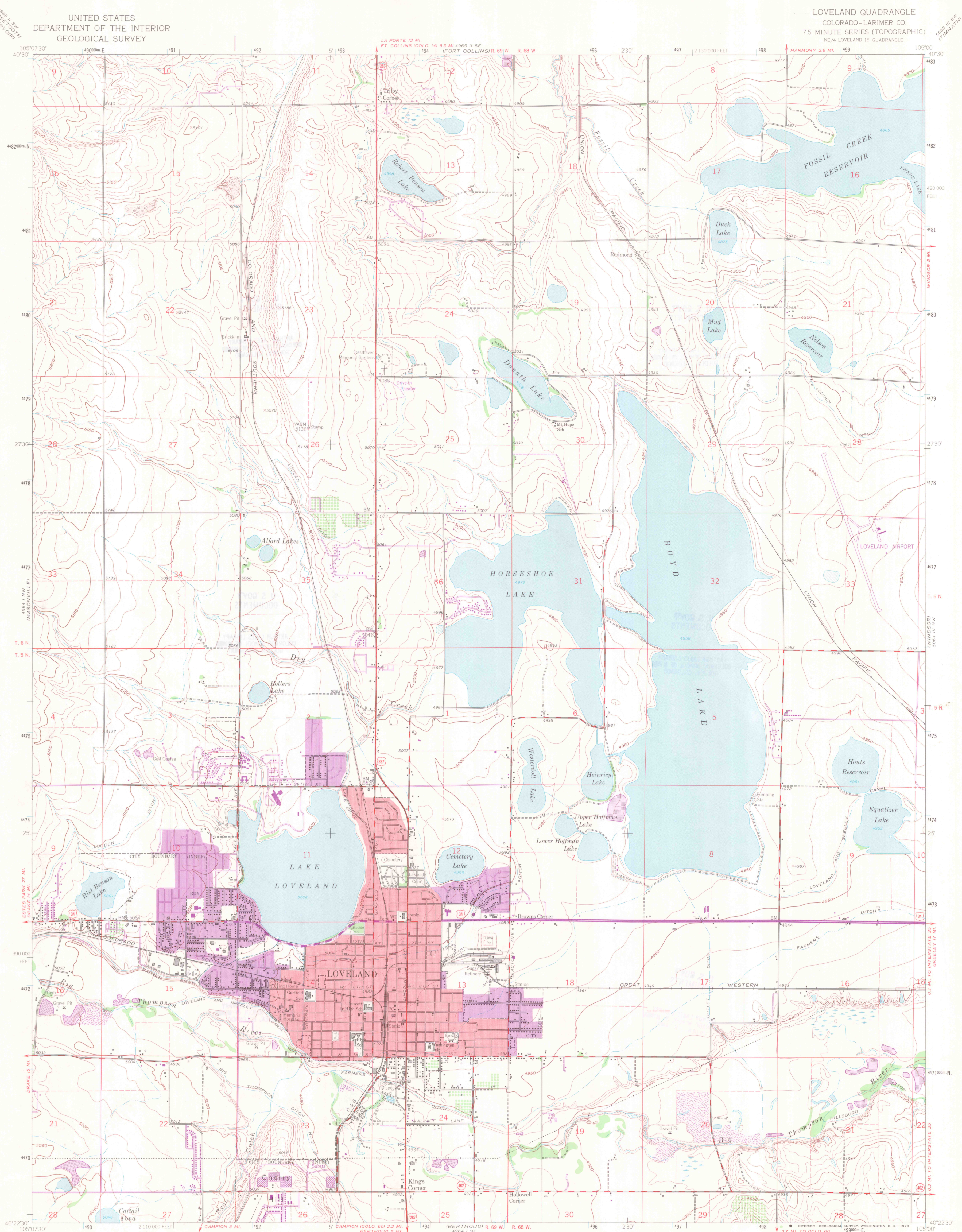


UNITED STATES  
DEPARTMENT OF THE INTERIOR  
GEOLOGICAL SURVEY

LOVELAND QUADRANGLE  
COLORADO-LARIMER CO.  
7.5 MINUTE SERIES (TOPOGRAPHIC)  
NE/4 LOVELAND 15' QUADRANGLE



Maped, edited, and published by the Geological Survey

Control by USGS and USC&GS

Topography by photogrammetric methods from aerial photographs taken 1956 and 1958. Field checked 1960

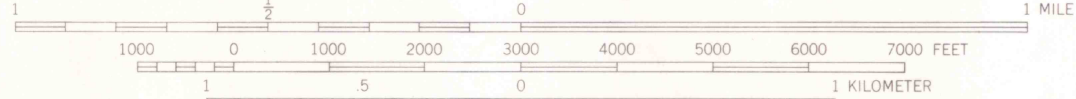
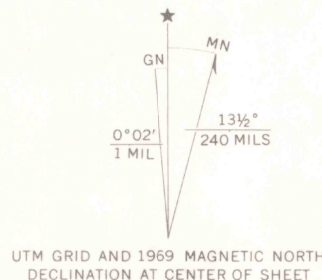
Polyconic projection. 1927 North American datum. 10,000-foot grid based on Colorado coordinate system, north zone 1000-meter Universal Transverse Mercator grid ticks, zone 13, shown in blue

Fine red dashed lines indicate selected fence and field lines where generally visible on aerial photographs. This information is unchecked

Red tint indicates area in which only landmark buildings are shown

Revisions shown in purple compiled from aerial photographs taken 1969. This information not field checked

Purple tint indicates extension of urban areas



CONTOUR INTERVAL 10 FEET  
DATUM IS MEAN SEA LEVEL

THIS MAP COMPLIES WITH NATIONAL MAP ACCURACY STANDARDS  
FOR SALE BY U. S. GEOLOGICAL SURVEY, DENVER, COLORADO 80225, OR WASHINGTON, D. C. 20242  
A FOLDER DESCRIBING TOPOGRAPHIC MAPS AND SYMBOLS IS AVAILABLE ON REQUEST

ROAD CLASSIFICATION  
Heavy-duty ——— Light-duty ———  
Medium-duty ——— Unimproved dirt ———  
U. S. Route ——— State Route ———

U. S. GOVT  
DOCUMENTS



LOVELAND, COLO.  
NE/4 LOVELAND 15' QUADRANGLE  
N4022-5-W10500/7-5

1962  
PHOTOREVISED 1969  
AMS 4964 I NE-SERIES V877

LIBRARY USE ONLY