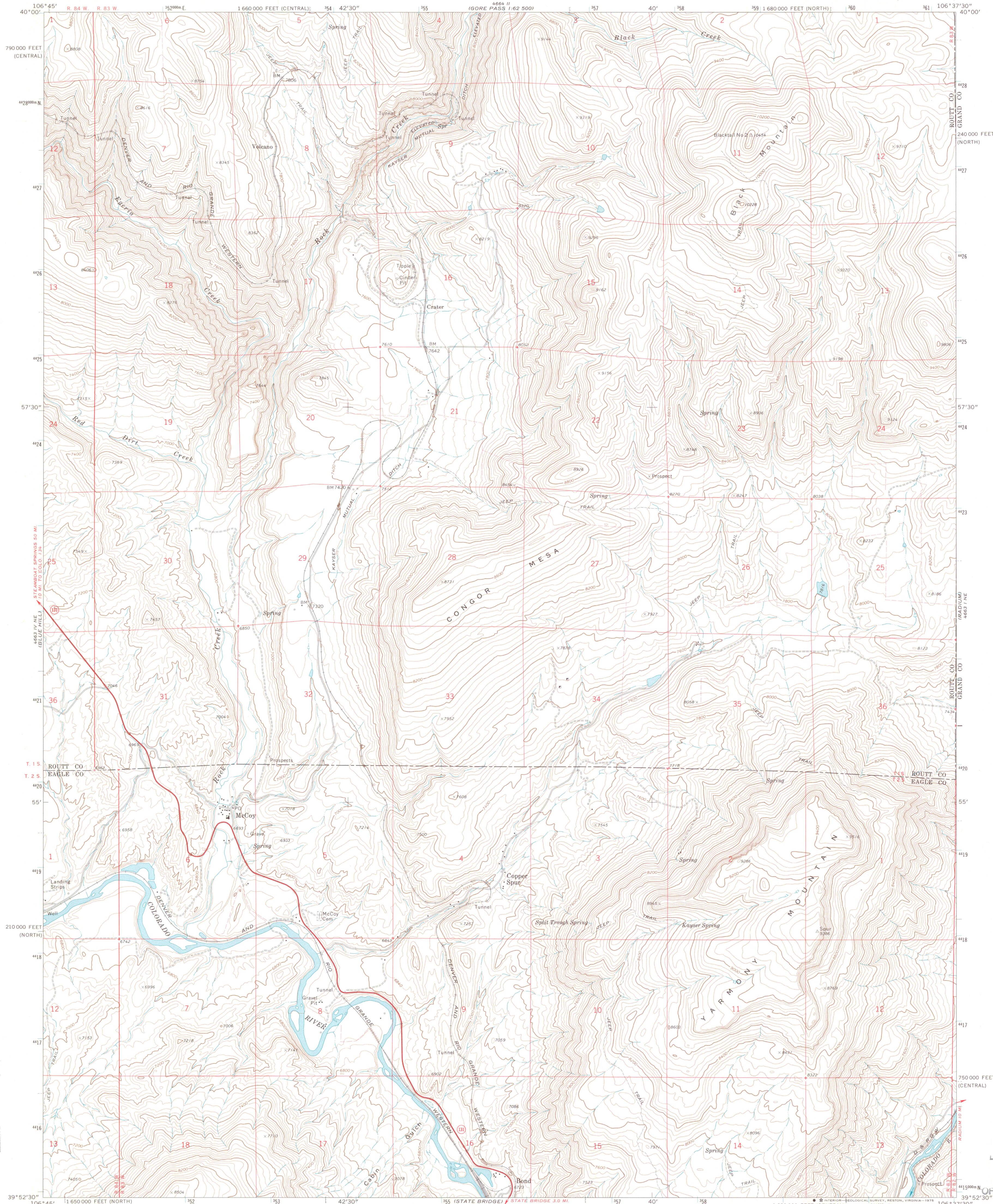


UNITED STATES  
DEPARTMENT OF THE INTERIOR  
GEOLOGICAL SURVEY

MC COY QUADRANGLE  
COLORADO  
7.5 MINUTE SERIES (TOPOGRAPHIC)



Mapped, edited, and published by the Geological Survey

Control by USGS, USC&GS, and U. S. Forest Service

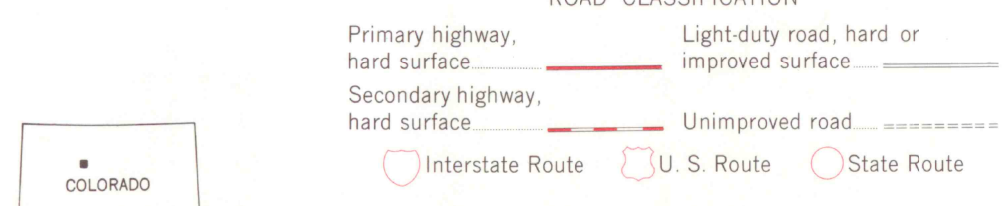
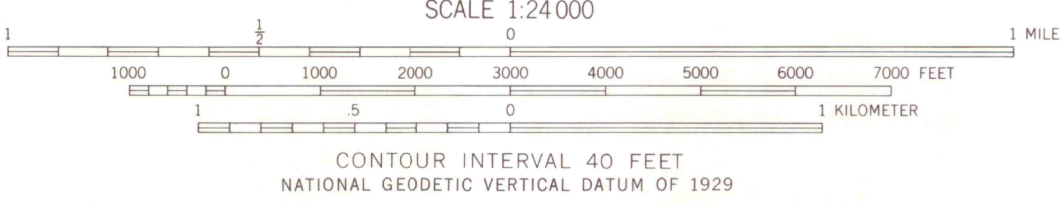
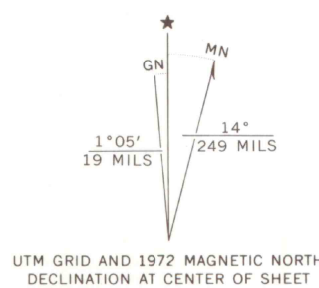
Topography by photogrammetric methods from aerial photographs taken 1971. Field checked 1972

Projection: Colorado coordinate system, north zone (Lambert conformal conic)

10,000-foot grid ticks based on Colorado coordinate system, north and central zones

1000-meter Universal Transverse Mercator grid ticks, zone 13, shown in blue. 1927 North American datum

Fine red dashed lines indicate selected fence lines



COLORADO SCHOOL OF MINES  
GOLDEN, COLORADO

MC COY, COLO.  
N3952.5-W10637.5/7.5

1972

AMS 4663 1 NW-SERIES V877

THIS MAP COMPLIES WITH NATIONAL MAP ACCURACY STANDARDS  
FOR SALE BY U.S. GEOLOGICAL SURVEY, DENVER, COLORADO 80225, OR RESTON, VIRGINIA 22092  
A FOLDER DESCRIBING TOPOGRAPHIC MAPS AND SYMBOLS IS AVAILABLE ON REQUEST



G 3701  
C222  
S24  
U5  
C-7-11