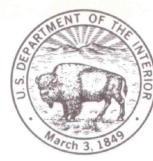
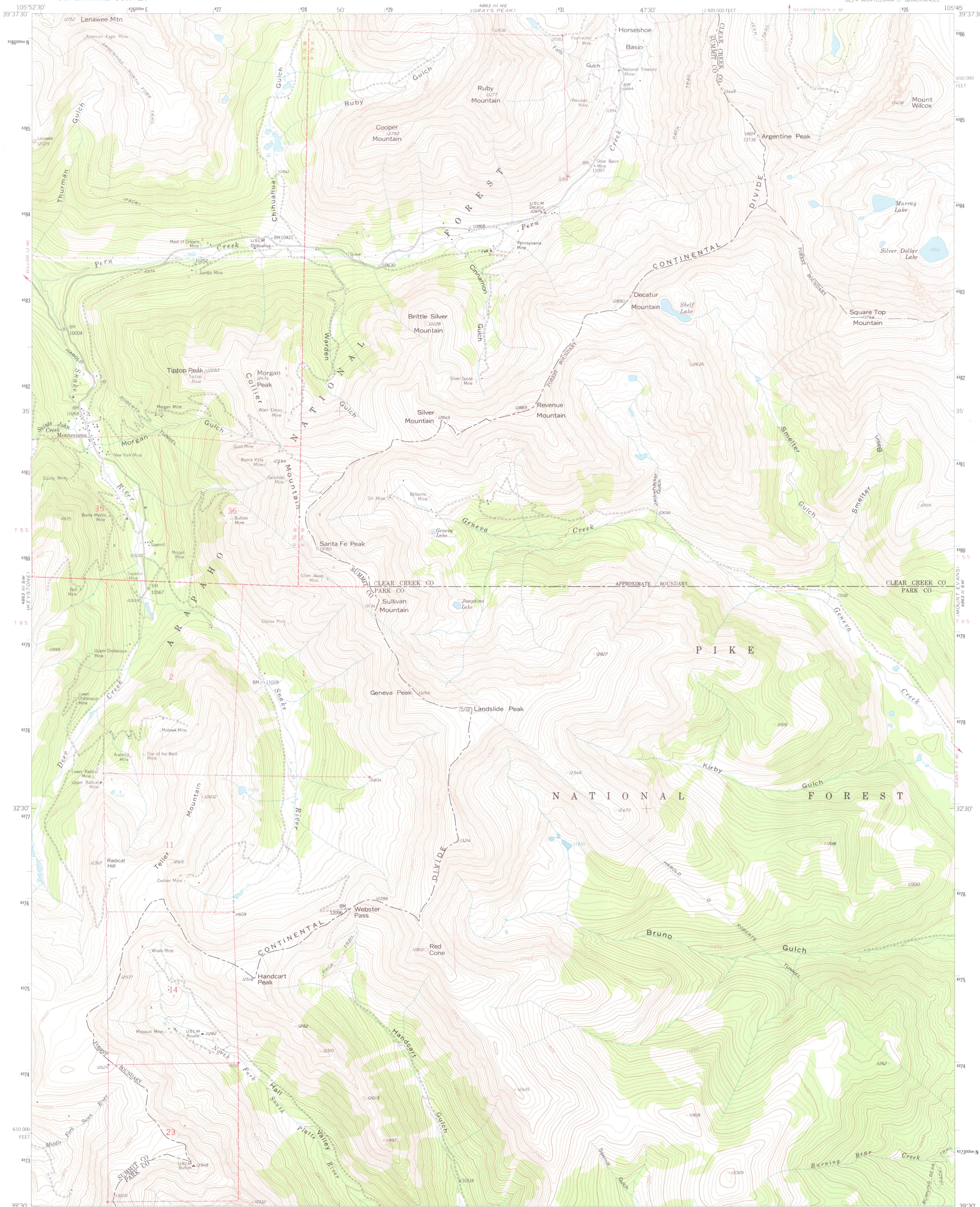


UNITED STATES
DEPARTMENT OF THE INTERIOR
GEOLOGICAL SURVEY



MONTEZUMA QUADRANGLE
COLORADO
7.5 MINUTE SERIES (TOPOGRAPHIC)
SE/4 MONTEZUMA 15' QUADRANGLE



Maped, edited, and published by the Geological Survey
as part of the Department of the Interior program
for the development of the Missouri River Basin
Control by USGS, USC&GS, USBR, and Denver Municipal Waterworks
Topography from aerial photographs by photogrammetric methods
Aerial photographs taken 1953. Field check 1958
Polyconic projection. 1927 North American datum
10,000-foot grid based on Colorado coordinate system,
central zone
1000 meter Universal Transverse Mercator grid ticks,
zone 13, shown in blue
Dashed land lines indicate approximate locations
Land lines omitted in T. 5 S and 6 S. R. 75 W., and in parts of
T. 5 S and 6 S. R. 76 W. because of insufficient data
There may be private inholdings within the boundaries of
the National or State reservations shown on this map

Map photoinspected 1974
No major culture or drainage changes observed

THIS MAP COMPLIES WITH NATIONAL MAP ACCURACY STANDARDS
FOR SALE BY U. S. GEOLOGICAL SURVEY, DENVER, COLORADO 80225, OR RESTON, VIRGINIA 22092
A FOLDER DESCRIBING TOPOGRAPHIC MAPS AND SYMBOLS IS AVAILABLE ON REQUEST

ROAD CLASSIFICATION
Light-duty..... Unimproved dirt

MONTEZUMA, COLO.
SE/4 MONTEZUMA 15' QUADRANGLE
N3930-W10545/7.5

1958
PHOTOINSPECTED 1974
DMA 4863 III SE-SERIES V877

LIBRARY USE ONLY

3701
C222
\$24
U.S.
LIBRARY USE ONLY