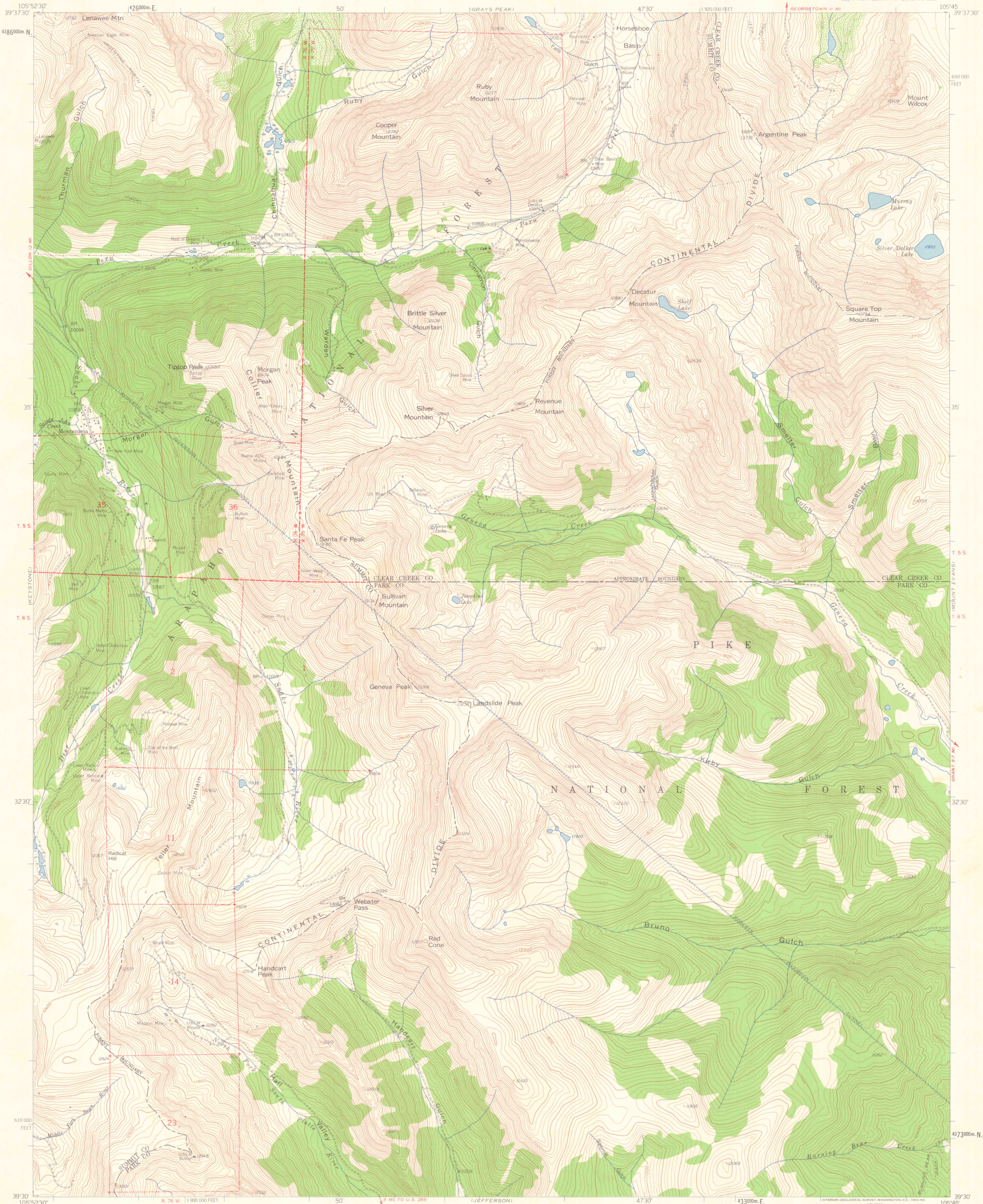


UNITED STATES  
DEPARTMENT OF THE INTERIOR  
GEOLOGICAL SURVEY

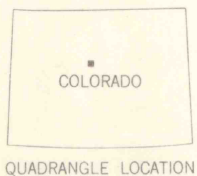
MONTEZUMA QUADRANGLE  
COLORADO  
7.5 MINUTE SERIES (TOPOGRAPHIC)  
SE 1/4 MONTEZUMA 15' QUADRANGLE



Mapped, edited, and published by the Geological Survey as part of the Department of the Interior program for the development of the Missouri River Basin. Control by USGS, USC&GS, USBR, and Denver Municipal Waterworks. Topography from aerial photographs by photogrammetric methods. Aerial photographs taken 1953. Field check 1958. Polyconic projection. 1927 North American datum. 10,000-foot grid based on Colorado coordinate system, central zone. 1000-meter Universal Transverse Mercator grid ticks, zone 13, shown in blue. Dashed land lines indicate approximate locations. Land lines omitted in T. 5 and 6 S., R. 75 W., and in parts of T. 5 and 6 S., R. 76 W. because of insufficient data.

SCALE 1:24,000  
1 0 1000 2000 3000 4000 5000 6000 7000 FEET  
1 0 5 10 KILOMETER  
CONTOUR INTERVAL 40 FEET  
DATUM IS MEAN SEA LEVEL  
THIS MAP COMPLIES WITH NATIONAL MAP ACCURACY STANDARDS  
FOR SALE BY U.S. GEOLOGICAL SURVEY, DENVER 25, COLORADO OR WASHINGTON 25, D. C.  
A FOLDER DESCRIBING TOPOGRAPHIC MAPS AND SYMBOLS IS AVAILABLE ON REQUEST

ROAD CLASSIFICATION  
Light-duty ——— Unimproved dirt ———



MONTEZUMA, COLO.  
SE 1/4 MONTEZUMA 15' QUADRANGLE  
N3930-W10545/7.5

1958

LIBRARY USE ONLY