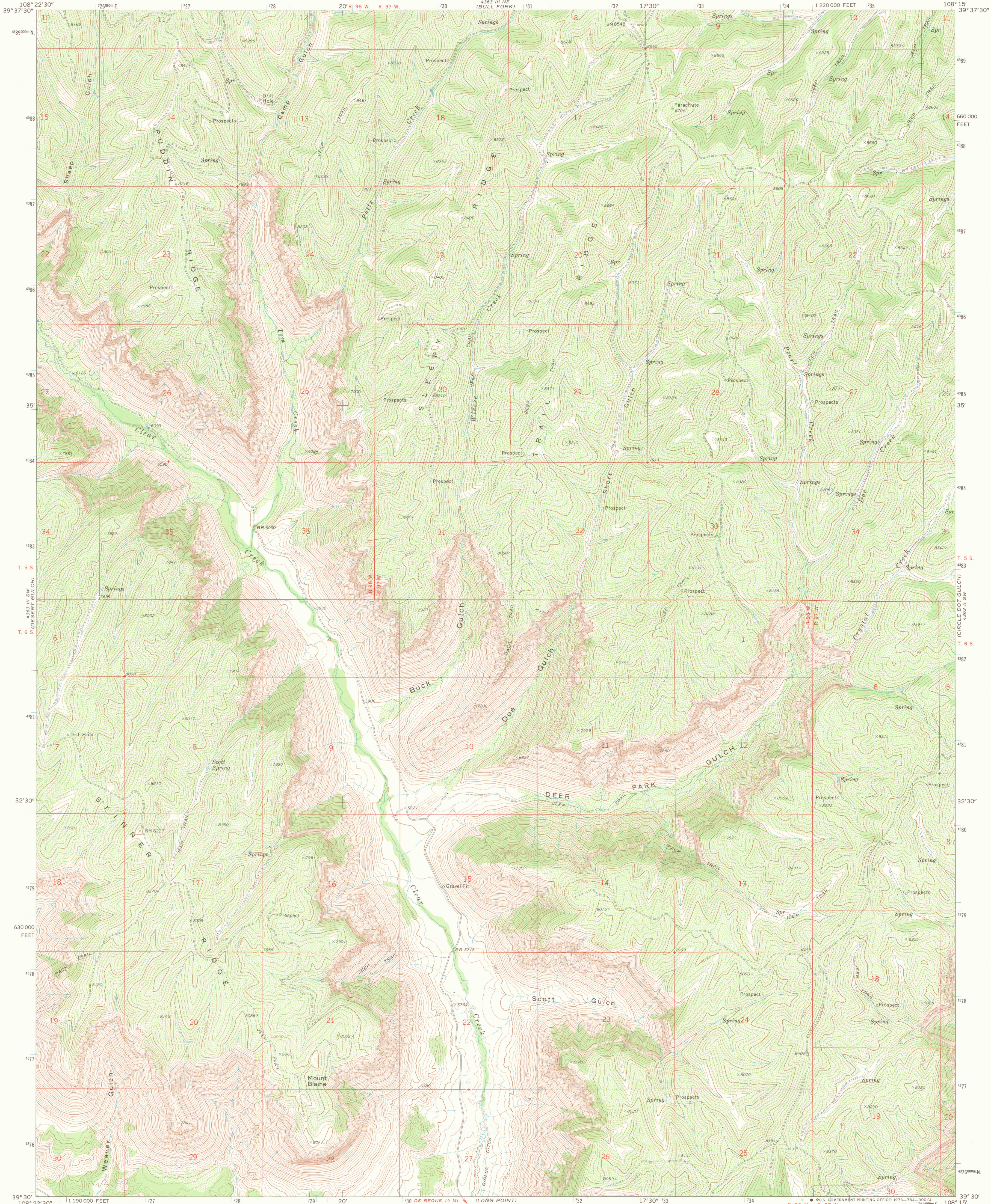
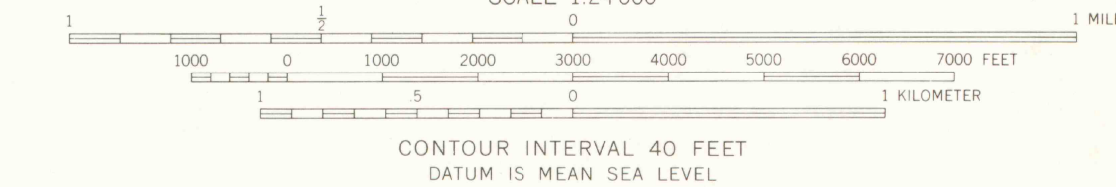
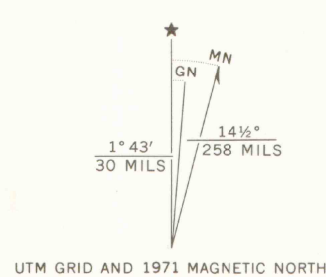


UNITED STATES
DEPARTMENT OF THE INTERIOR
GEOLOGICAL SURVEY

MOUNT BLAINE QUADRANGLE
COLORADO—GARFIELD CO.
7.5 MINUTE SERIES (TOPOGRAPHIC)
8E/4 HIGHMORE 15' QUADRANGLE



Mapped, edited, and published by the Geological Survey
Control by USGS and USC&GS
Topography by photogrammetric methods from aerial
photographs taken 1970. Field checked 1971
Projection and 10,000-foot grid ticks: Colorado
coordinate system, central zone (Lambert conformal conic)
1000-meter Universal Transverse Mercator grid ticks,
zone 12, shown in blue. 1927 North American datum
Fine red dashed lines indicate selected fence lines



ROAD CLASSIFICATION
Primary highway, hard surface
Secondary highway, hard surface
Light-duty road, hard or improved surface
Unimproved road

Interstate Route U. S. Route State Route

MOUNT BLAINE, COLO.
8E/4 HIGHMORE 15' QUADRANGLE
N 3930-W 10815/7.5

1971

AMS 4363 III SE—SERIES V877

THIS MAP COMPLIES WITH NATIONAL MAP ACCURACY STANDARDS
FOR SALE BY U.S. GEOLOGICAL SURVEY, DENVER, COLORADO 80225, OR WASHINGTON, D. C. 20242
A FOLDER DESCRIBING TOPOGRAPHIC MAPS AND SYMBOLS IS AVAILABLE ON REQUEST

OFFICE COPY

LIBRARY USE ONLY