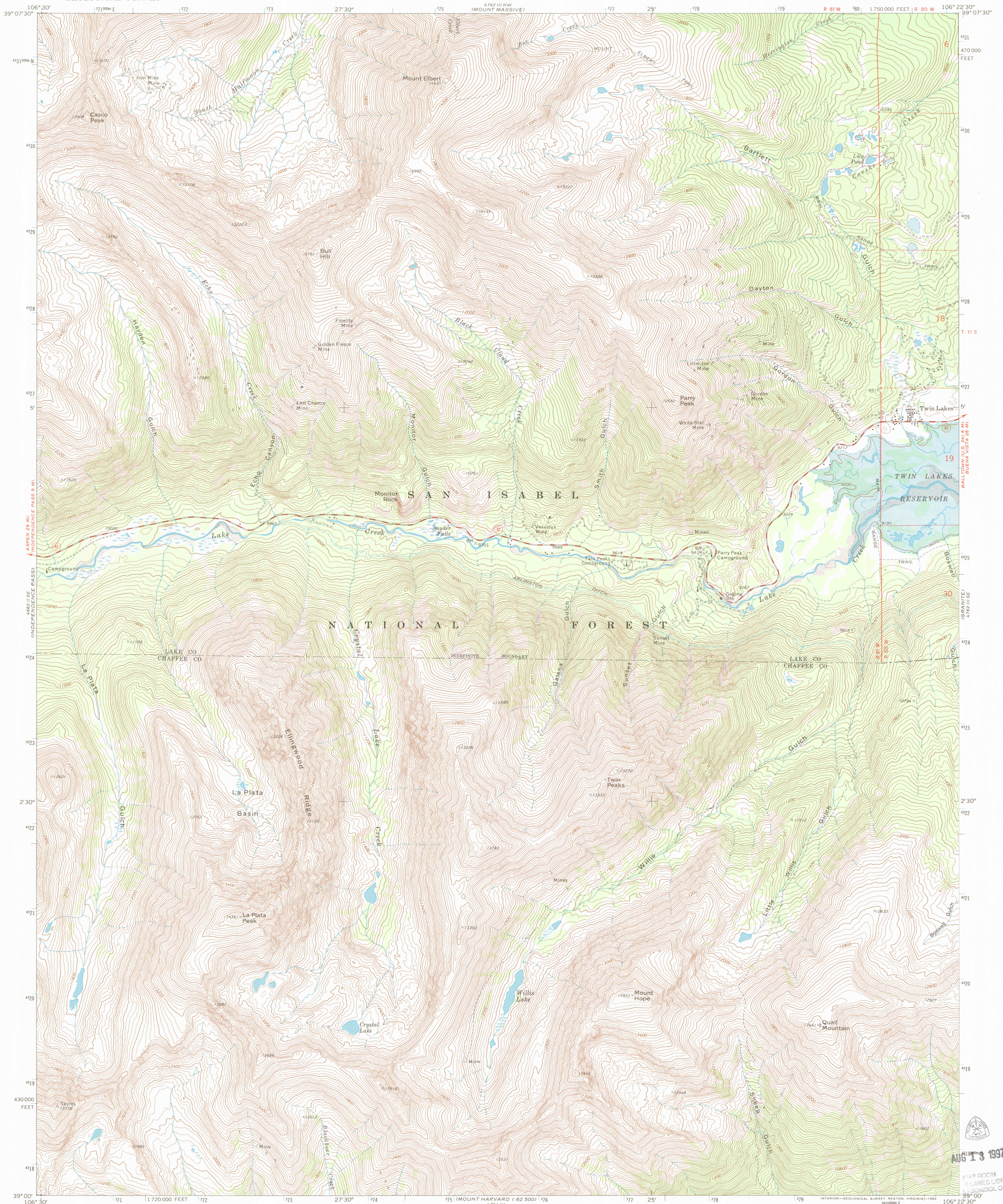


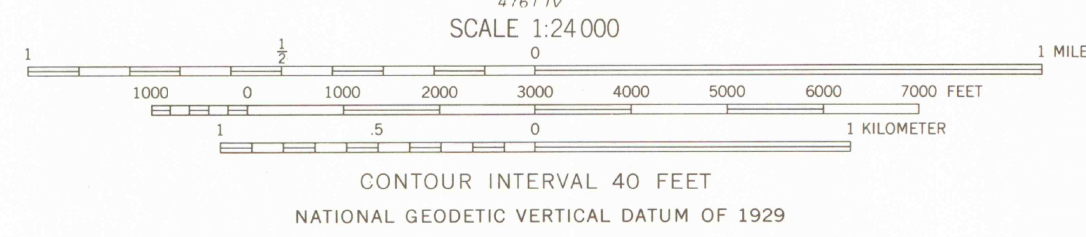
UNITED STATES  
DEPARTMENT OF THE INTERIOR  
GEOLOGICAL SURVEY

MOUNT ELBERT QUADRANGLE  
COLORADO  
7.5 MINUTE SERIES (TOPOGRAPHIC)



Mapped, edited, and published by the Geological Survey  
Control by USGS and USC&GS  
Topography by photogrammetric methods from aerial  
photographs taken 1964. Field checked 1967  
Polyconic projection. 1927 North American datum  
10,000-foot grid based on Colorado coordinate system,  
central zone  
1000-meter Universal Transverse Mercator grid ticks,  
zone 13, shown in blue  
Fine red dashed lines indicate selected fence lines  
Certain land lines are omitted because of insufficient data  
Blue hatching indicates areas to be submerged by  
Twin Lakes Reservoir at elevation 9208 feet

To place on the predicted North American Datum 1983  
move the projection lines 5 meters north and  
51 meters east as shown by dashed corner ticks



THIS MAP COMPLIES WITH NATIONAL MAP ACCURACY STANDARDS  
FOR SALE BY U. S. GEOLOGICAL SURVEY, DENVER, COLORADO 80225, OR RESTON, VIRGINIA 22092  
A FOLDER DESCRIBING TOPOGRAPHIC MAPS AND SYMBOLS IS AVAILABLE ON REQUEST

There may be private inholdings within the boundaries of  
the National or State reservations shown on this map  
Map photoinspected 1979  
No major culture or drainage changes observed

ROAD CLASSIFICATION  
Medium-duty ——— Light-duty ———  
Unimproved dirt ———  
○ State Route

MOUNT ELBERT, COLO.  
SW 1/4 MOUNT ELBERT 15' QUADRANGLE  
N3900—W10622.5/7.5

1967  
PHOTOINSPECTED 1979  
DMA 4762 III SW-SERIES VI



AUG 13 1997

ROOM  
TWIN LAKES LIBRARY  
SCHOOL OF MINES

OFFICE COPY  
LIBRARY USE ONLY

