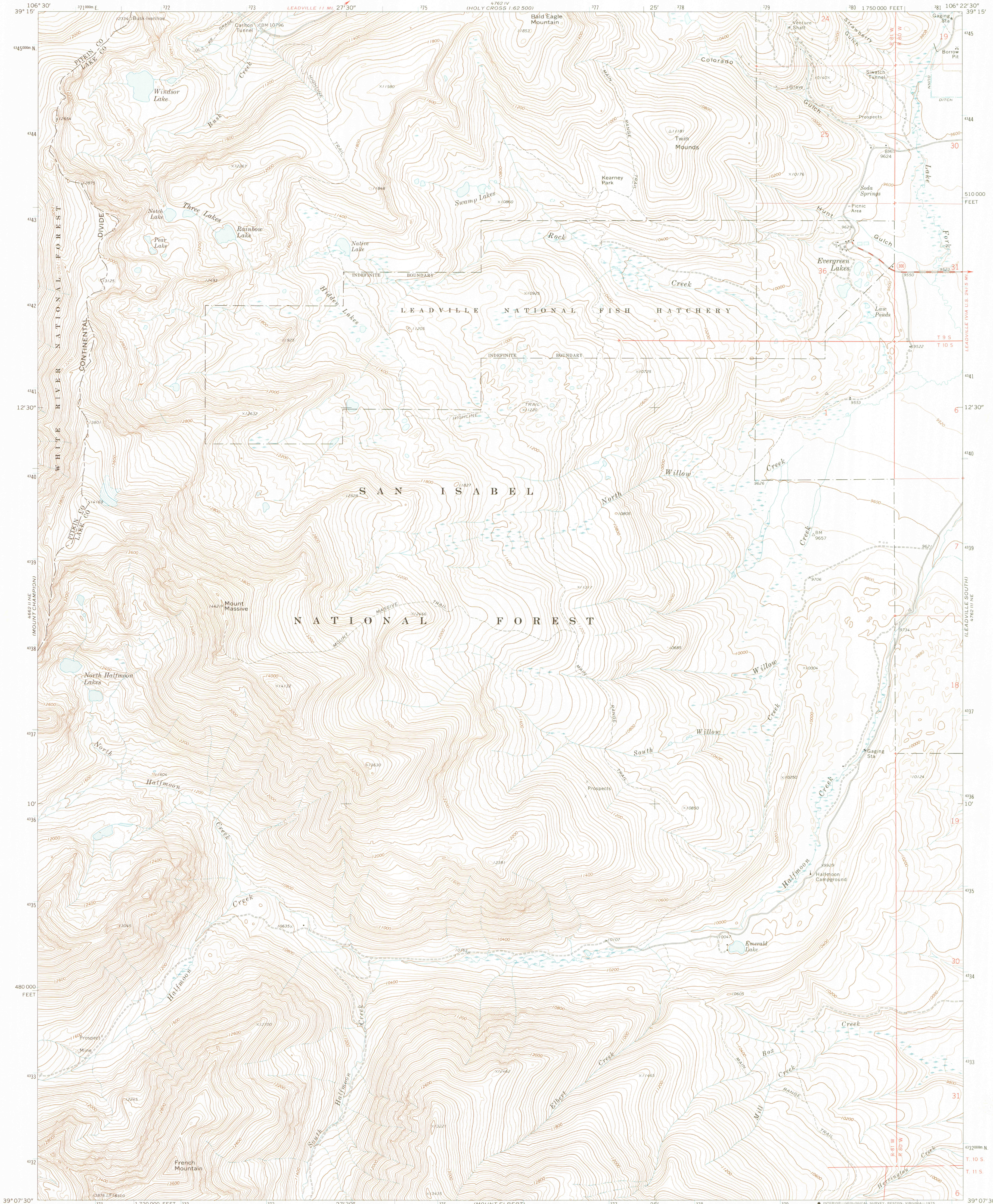
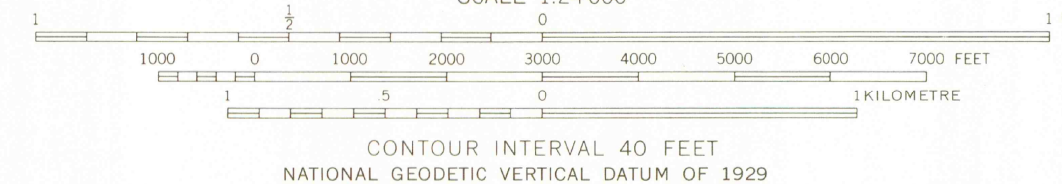
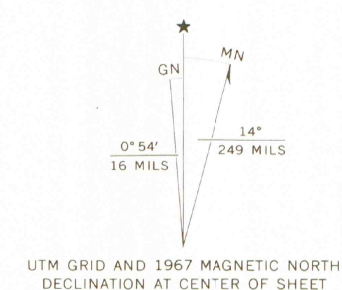


UNITED STATES
DEPARTMENT OF THE INTERIOR
GEOLOGICAL SURVEY

MOUNT MASSIVE QUADRANGLE
COLORADO
7.5 MINUTE SERIES (TOPOGRAPHIC)



Mapped, edited, and published by the Geological Survey
Control by USGS and USC&GS, and Bureau of Reclamation
Topography by photogrammetric methods from aerial
photographs taken 1964. Field checked 1967
Polyconic projection, 1927 North American datum
10,000-foot grid based on Colorado coordinate system,
central zone
1000 metre Universal Transverse Mercator grid ticks,
zone 13, shown in blue
Certain land lines are omitted because of insufficient data



ROAD CLASSIFICATION
Medium-duty ——— Light-duty ———
Unimproved dirt ———
State Route ———

MOUNT MASSIVE, COLO.
N3907.5-W10622.5/7.5
1967
AMS 4762 III NW—SERIES V877

THIS MAP COMPLIES WITH NATIONAL MAP ACCURACY STANDARDS
FOR SALE BY U. S. GEOLOGICAL SURVEY, DENVER, COLORADO 80225, OR RESTON, VIRGINIA 22092
A FOLDER DESCRIBING TOPOGRAPHIC MAPS AND SYMBOLS IS AVAILABLE ON REQUEST