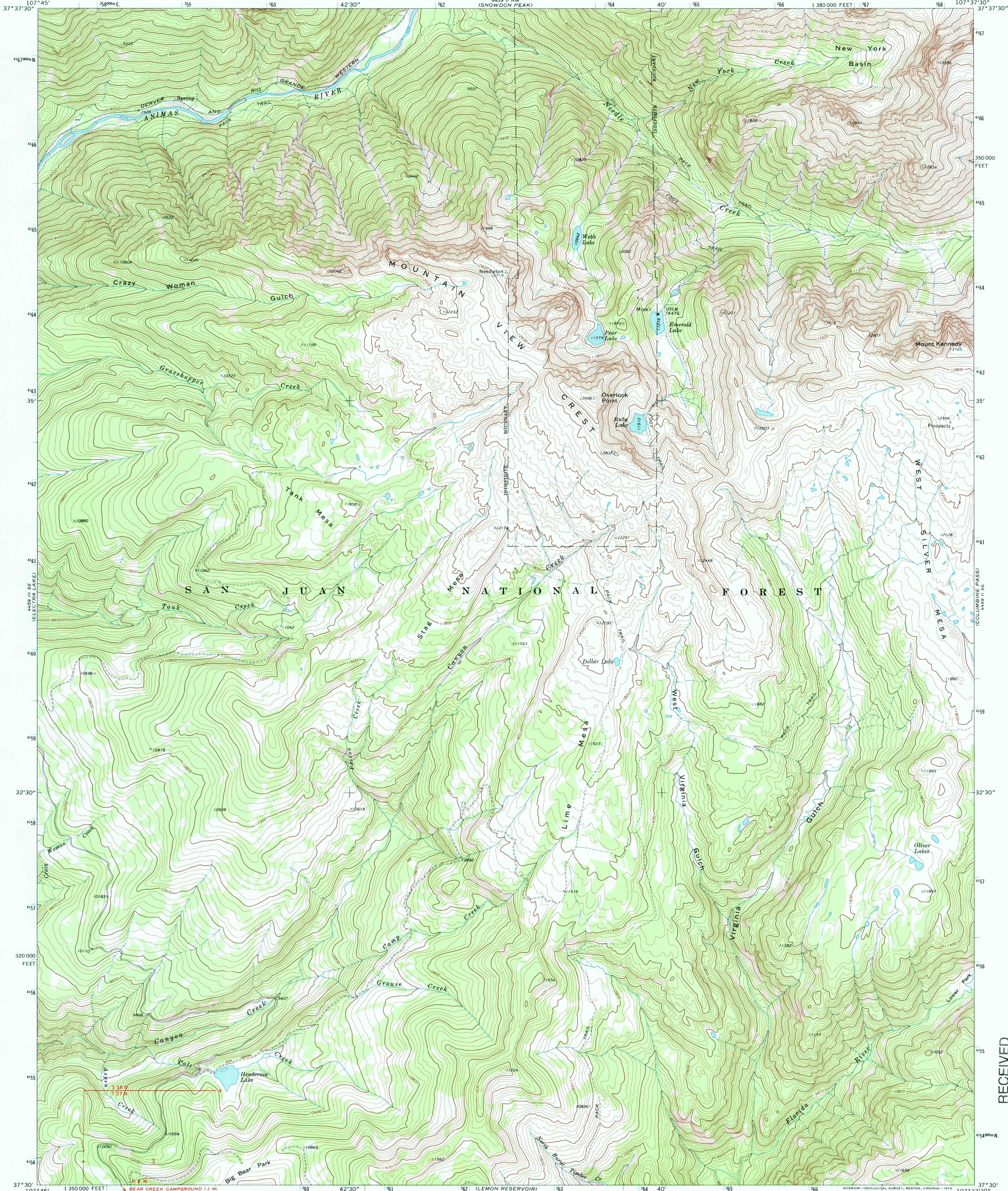


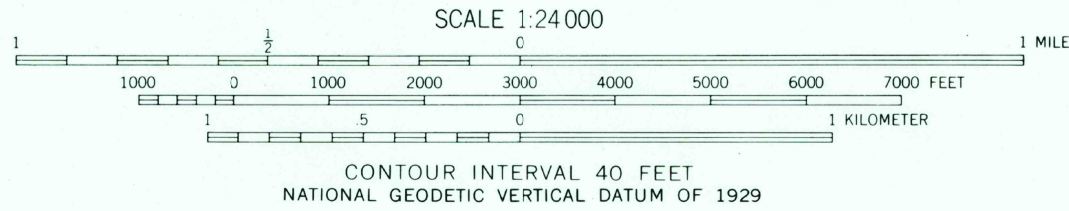
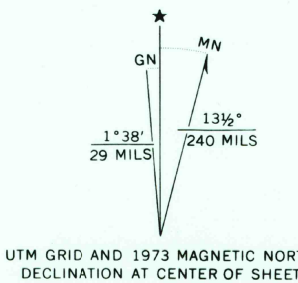


U.S. DEPARTMENT OF THE INTERIOR  
U.S. GEOLOGICAL SURVEY

MOUNTAIN VIEW CREST QUADRANGLE  
COLORADO—LA PLATA CO.  
7.5 MINUTE SERIES (TOPOGRAPHIC)  
SW/4 NEEDLE MOUNTAINS 15' QUADRANGLE



Mapped, edited, and published by the Geological Survey  
Control by USGS and USC&GS  
Topography by photogrammetric methods from aerial  
photographs taken 1972. Field checked 1973  
Projection and 10,000-foot grid ticks: Colorado  
coordinate system, south zone (Lambert conformal conic)  
1000-meter Universal Transverse Mercator grid ticks,  
zone 13, shown in blue. 1927 North American datum  
Where omitted, land lines have not been established  
or are not shown because of insufficient data



ROAD CLASSIFICATION  
Primary highway, hard surface ——— Light-duty road, hard or improved surface ———  
Secondary highway, hard surface ——— Unimproved road ———  
○ Interstate Route ○ U.S. Route ○ State Route

MOUNTAIN VIEW CREST, COLO.  
SW/4 NEEDLE MOUNTAINS 15' QUADRANGLE  
N 3730—W 10737.5/7.5

1973

AMS 4459 II SW—SERIES V877

RECEIVED  
APR 30 2001

USGS NWJ  
HISTORICAL MAP ARCHIVES

