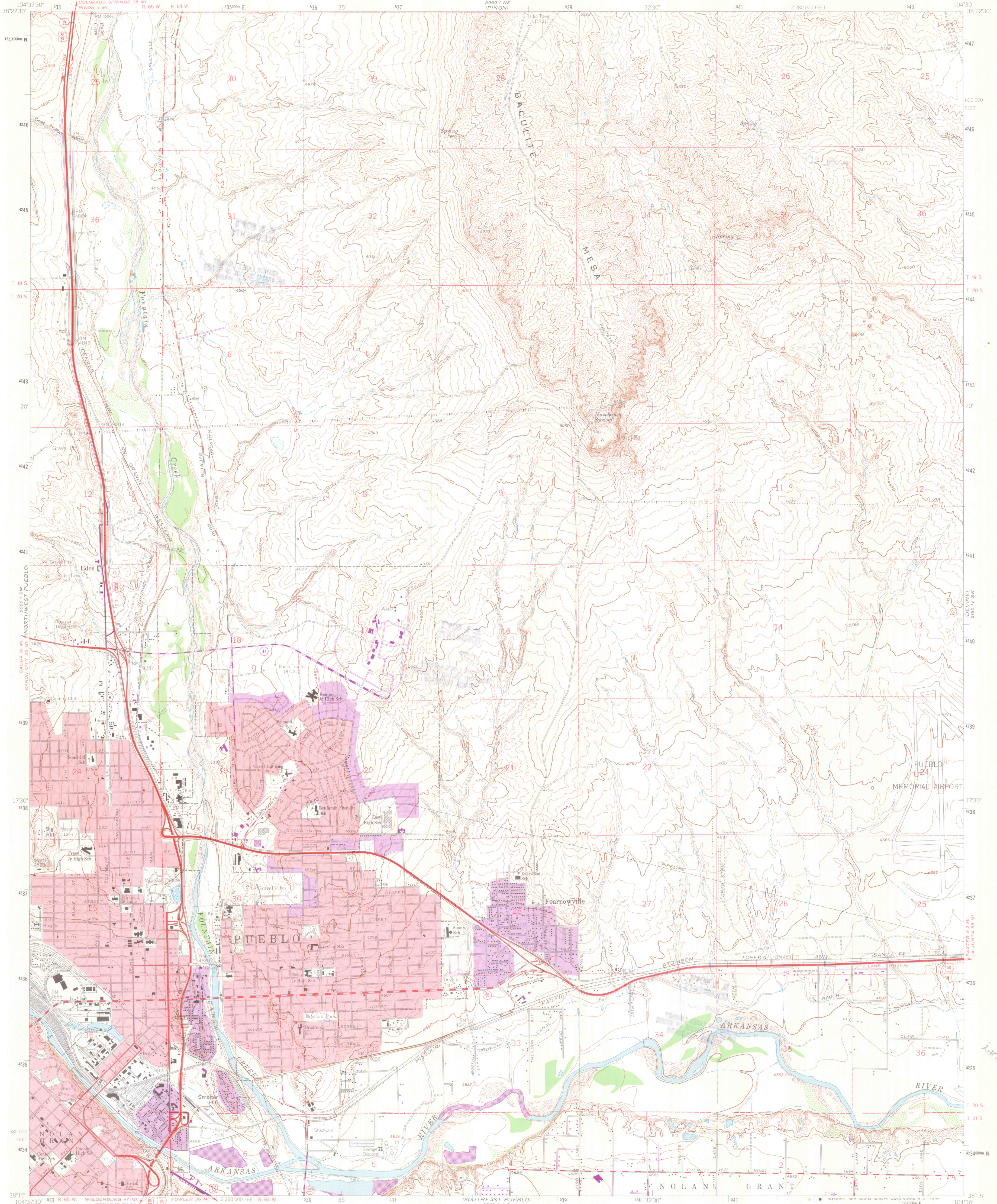


UNITED STATES  
DEPARTMENT OF THE INTERIOR  
GEOLOGICAL SURVEY

NORTHEAST PUEBLO QUADRANGLE  
COLORADO-PUEBLO CO.  
7.5 MINUTE SERIES (TOPOGRAPHIC)



Maped, edited, and published by the Geological Survey

Control by USGS and USC&GS

Topography by photogrammetric methods from aerial photographs taken 1954 and 1957. Field checked 1961

Polyconic projection, 1927 North American datum

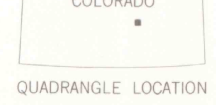
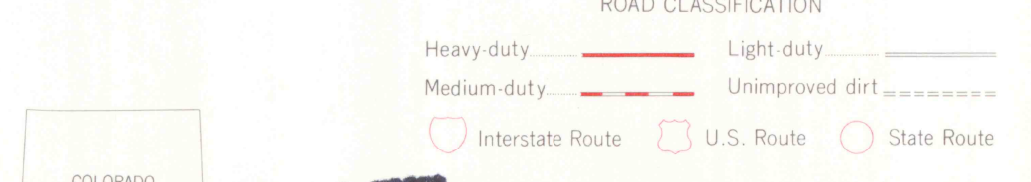
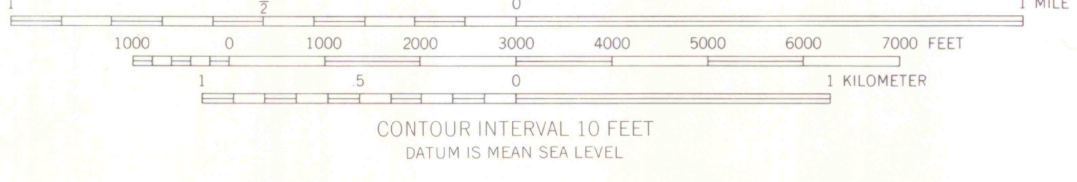
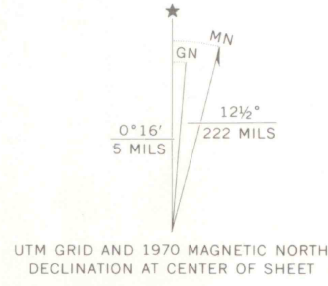
10,000-foot grid based on Colorado coordinate system, south zone 1000 meter Universal Transverse Mercator grid ticks, zone 13, shown in blue

Red tint indicates areas in which only landmark buildings are shown

Fine red dashed lines indicate selected fence and field lines generally visible on aerial photographs. This information is unchecked

Revisions shown in purple compiled from aerial photographs taken 1970. This information not field checked

Purple tint indicates extension of urban areas



U.S. GOVERNMENT  
PRINTING OFFICE  
WASHINGTON, D.C. 20540  
1961  
PHOTOREVISED 1970  
AMS 5060 1 SE-SERIES V877

NORTHEAST PUEBLO, COLO.  
N3815-W10430/7.5

THIS MAP COMPLIES WITH NATIONAL MAP ACCURACY STANDARDS  
FOR SALE BY U.S. GEOLOGICAL SURVEY, DENVER, COLORADO 80225, OR WASHINGTON, D.C. 20242  
A FOLDER DESCRIBING TOPOGRAPHIC MAPS AND SYMBOLS IS AVAILABLE ON REQUEST