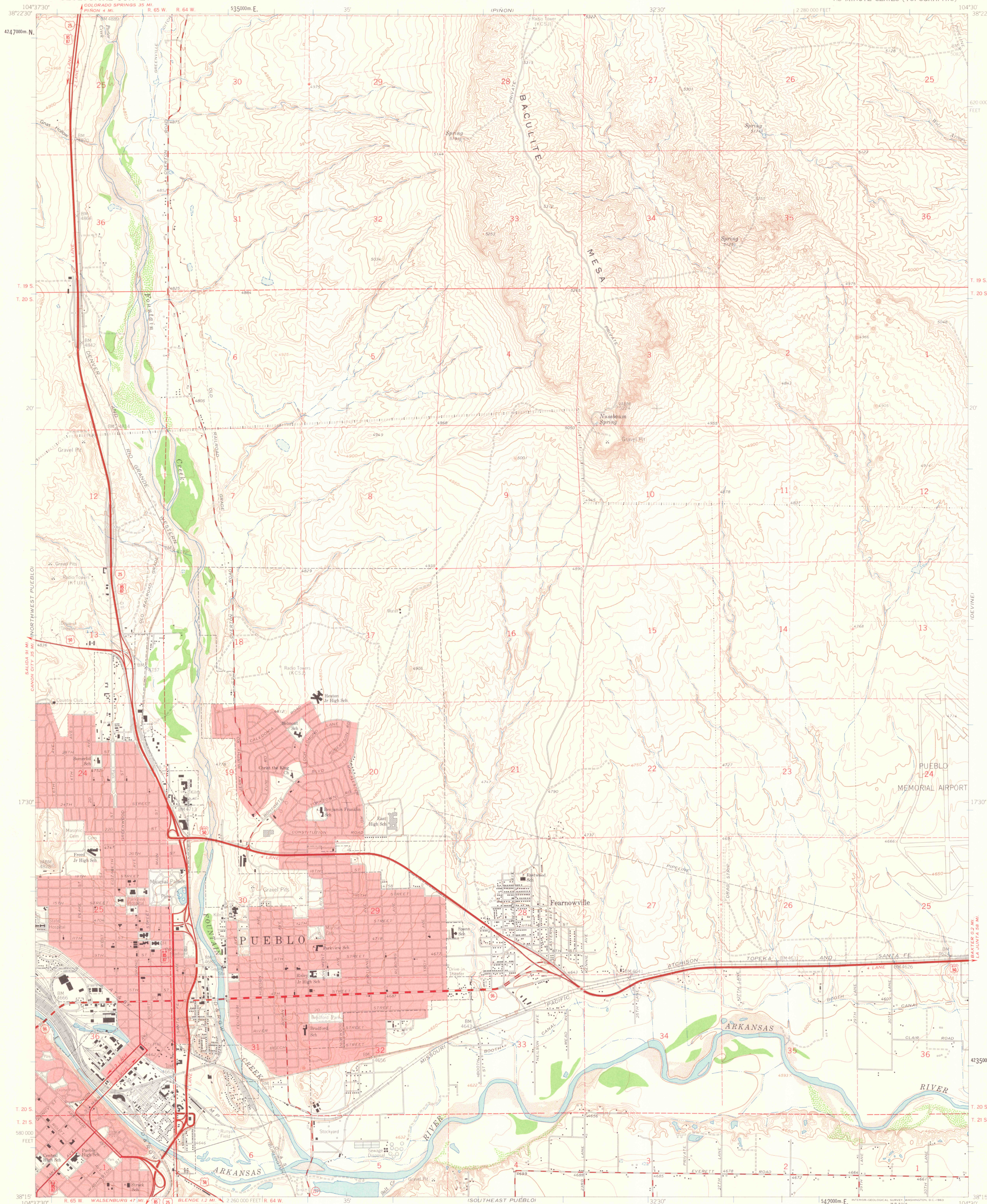


UNITED STATES
DEPARTMENT OF THE INTERIOR
GEOLOGICAL SURVEY

NORTHEAST PUEBLO QUADRANGLE
COLORADO-PUEBLO CO.
7.5 MINUTE SERIES (TOPOGRAPHIC)



Mapped, edited, and published by the Geological Survey

Control by USGS and USC&GS

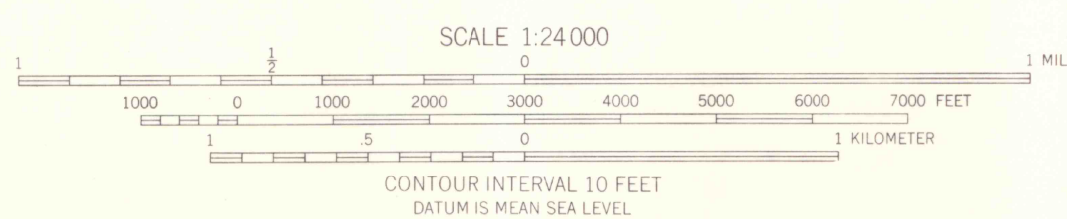
Topography by photogrammetric methods from aerial photographs taken 1954 and 1957. Field checked 1961

Polyconic projection. 1927 North American datum. 10,000-foot grid based on Colorado coordinate system, south zone. 1000-meter Universal Transverse Mercator grid ticks, zone 13, shown in blue.

Red tint indicates areas in which only landmark buildings are shown.

Fine red dashed lines indicate selected fence and field lines where generally visible on aerial photographs. This information is unchecked.

TRUE NORTH
MAGNETIC NORTH
APPROXIMATE MEAN DECLINATION, 1961



LIBRARY USE ONLY

ROAD CLASSIFICATION	
Heavy-duty	Light-duty
Medium-duty	Unimproved dirt
Interstate Route	U.S. Route
	State Route

NORTHEAST PUEBLO, COLO.
N3815-W10430/7.5

1961