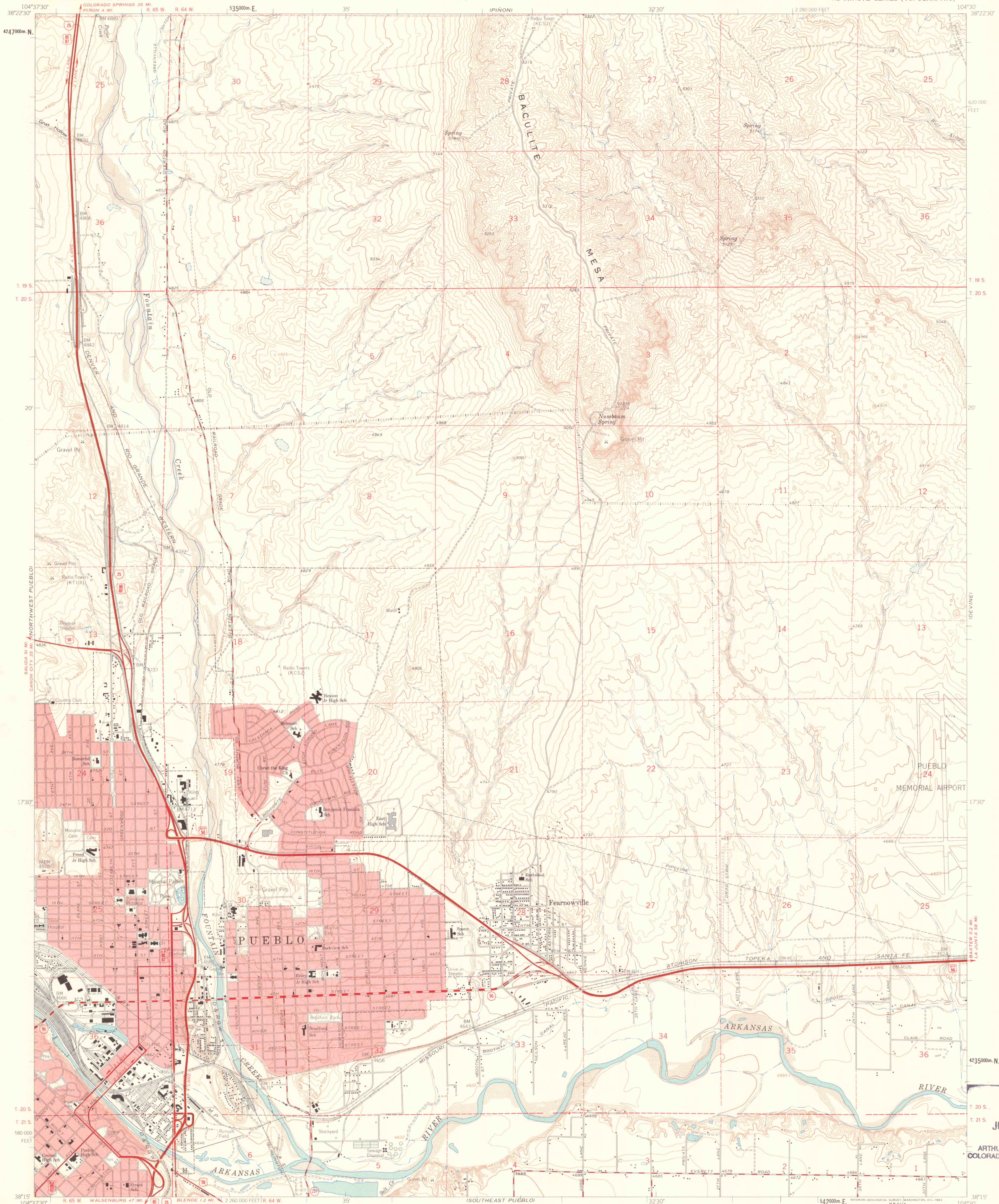


UNITED STATES  
DEPARTMENT OF THE INTERIOR  
GEOLOGICAL SURVEY

NORTHEAST PUEBLO QUADRANGLE  
COLORADO—PUEBLO CO.  
7.5 MINUTE SERIES (TOPOGRAPHIC)



Mapped, edited, and published by the Geological Survey

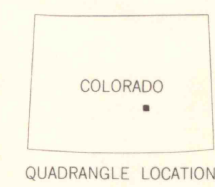
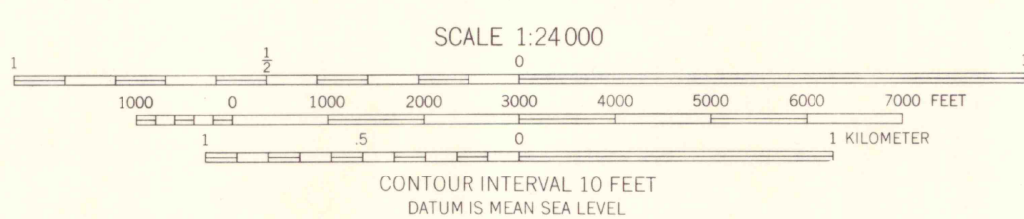
Control by USGS and USC&GS

Topography by photogrammetric methods from aerial photographs taken 1954 and 1957. Field checked 1961

Polynomial projection. 1927 North American datum. 10,000 foot grid based on Colorado coordinate system, south zone. 1000-meter Universal Transverse Mercator grid ticks, zone 13, shown in blue.

Red tint indicates areas in which only landmark buildings are shown. Fine red dashed lines indicate selected fence and field lines where generally visible on aerial photographs. This information is unchecked.

APPROXIMATE MEAN  
DECLINATION, 1961



ROAD CLASSIFICATION  
Heavy-duty ——— Light-duty ———  
Medium-duty ——— Unimproved dirt ———  
Interstate Route — U.S. Route — State Route

NORTHEAST PUEBLO, COLO.  
N3815—W10430/7.5

1961

OFFICE COPY  
LIBRARY USE ONLY

JUN 1995  
MAP ROOM  
ARTHUR LAKES LIBRARY  
COLORADO SCHOOL OF MINES

G  
3701  
C222  
S24  
US

