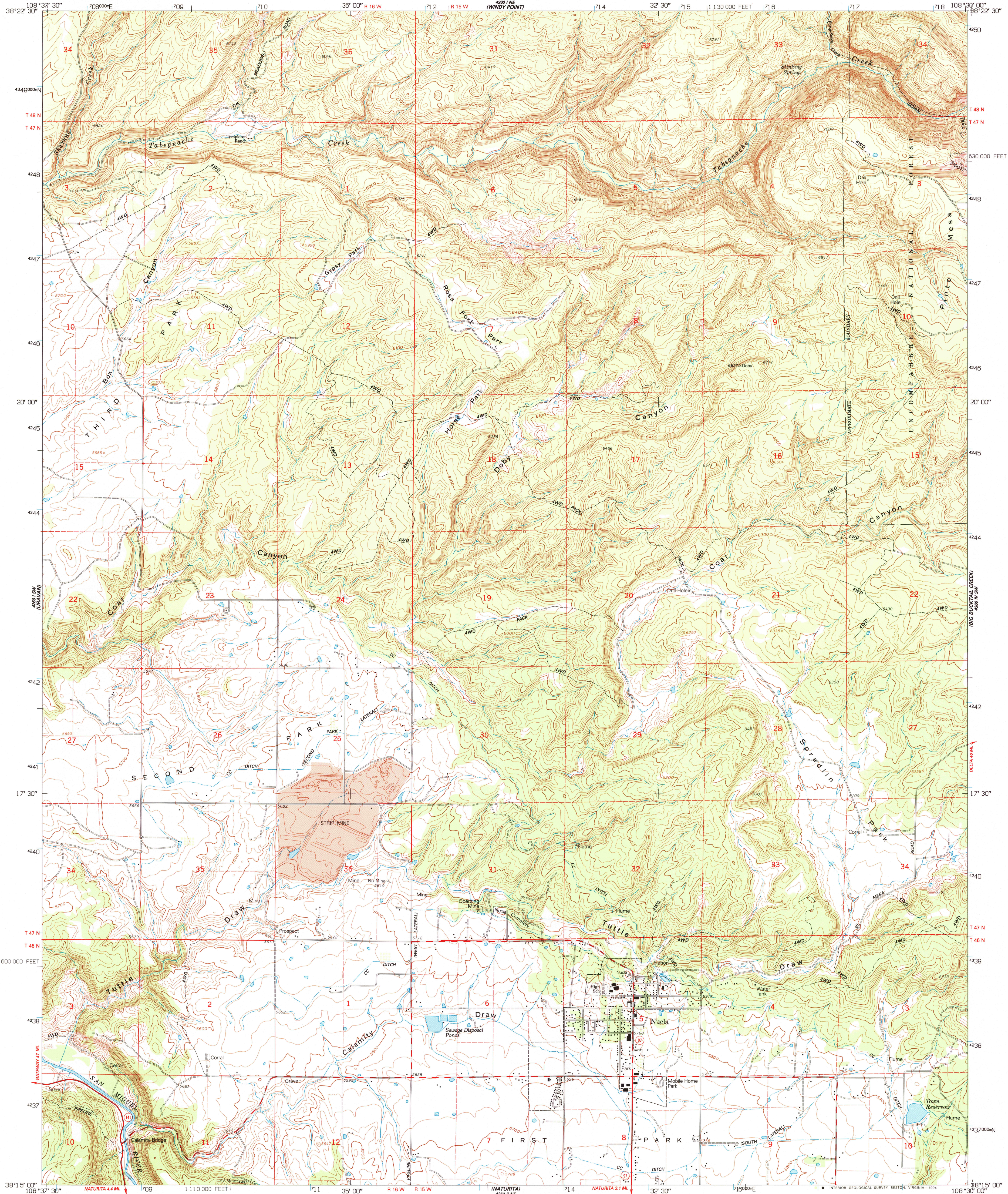


UNITED STATES  
DEPARTMENT OF THE INTERIOR  
GEOLOGICAL SURVEY

NUCLA QUADRANGLE  
COLORADO-MONTROSE CO.  
7.5 MINUTE SERIES (TOPOGRAPHIC)



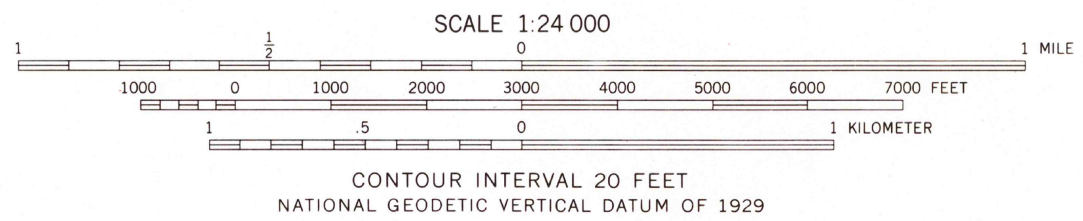
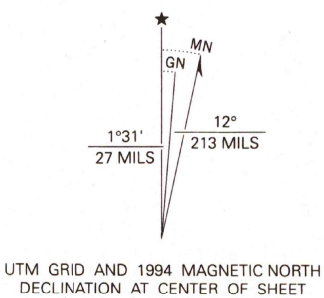
Produced by the United States Geological Survey

Control by USGS

Compiled from aerial photographs taken 1956. Revised from aerial photographs taken 1988 and other sources. Field checked 1990. Map edited 1994.

North American Datum of 1927 (NAD 27). Projection and 10000-foot ticks: Colorado Coordinate System, south zone (Lambert Conformal Conic). Blue 1000-meter Universal Transverse Mercator ticks, zone 12. North American Datum of 1983 (NAD 83) is shown by dashed corner ticks. The values of the shift between NAD 27 and NAD 83 for 7.5-minute intersections are obtainable from National Geodetic Survey NADCON software.

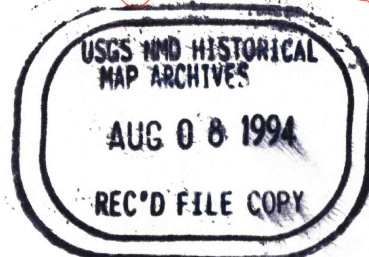
There may be private inholdings within the boundaries of the National or State reservations shown on this map. Fine red dashed lines indicate selected fence and field lines where generally visible on aerial photographs. This information is unchecked.



THIS MAP COMPLIES WITH NATIONAL MAP ACCURACY STANDARDS  
FOR SALE BY U. S. GEOLOGICAL SURVEY, DENVER, COLORADO 80225, OR RESTON, VIRGINIA 22092  
A FOLDER DESCRIBING TOPOGRAPHIC MAPS AND SYMBOLS IS AVAILABLE ON REQUEST

ROAD CLASSIFICATION

Primary highway, hard surface  
Secondary highway, hard surface  
Unimproved road  
Light-duty road, hard or improved surface  
U. S. Route  
State Route



NUCLA, CO  
38108-C5-TF-024

1994

DMA 4260 1 SE-SERIES V877