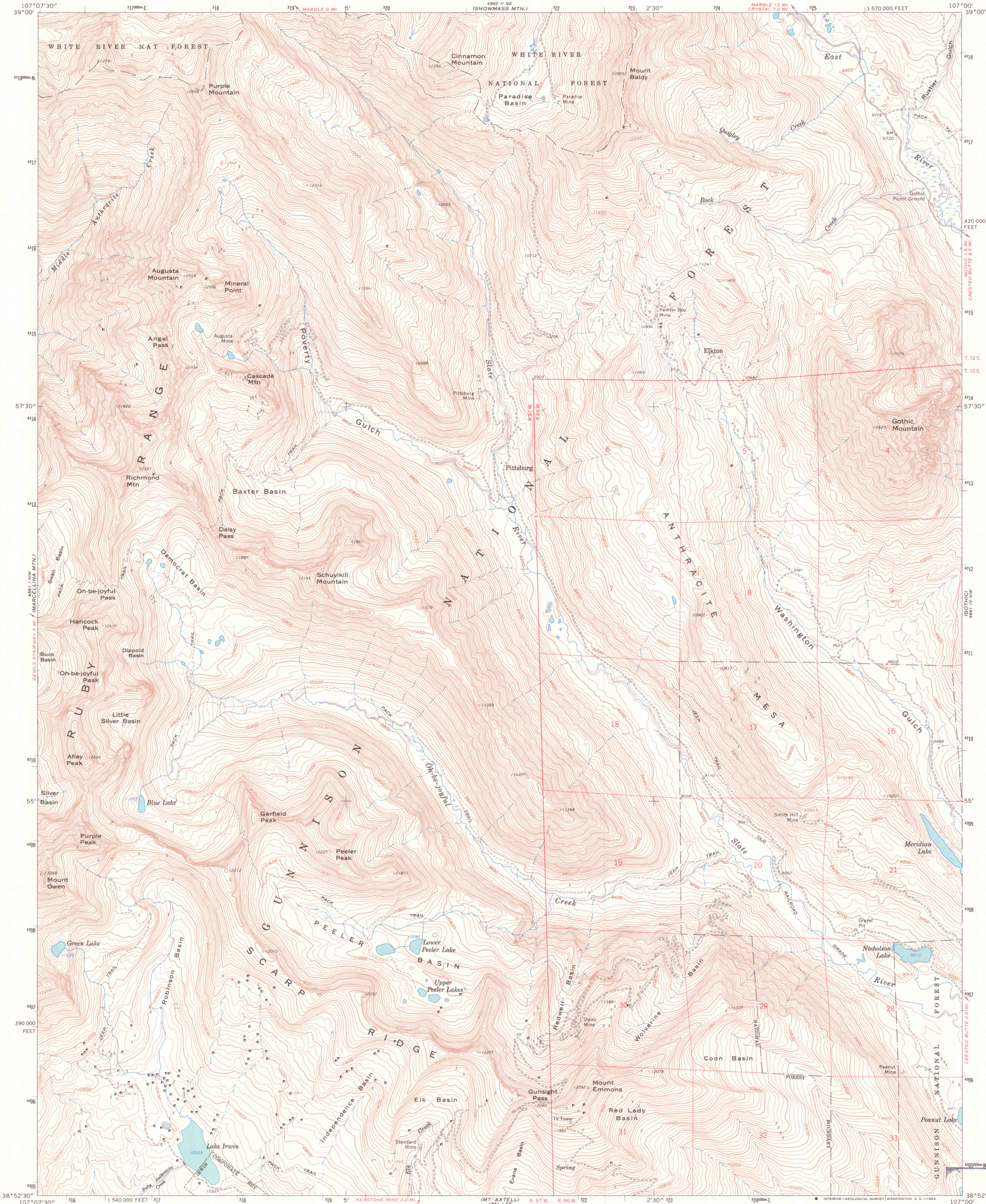


UNITED STATES
DEPARTMENT OF THE INTERIOR
GEOLOGICAL SURVEY

OH-BE-JOYFUL QUADRANGLE
COLORADO—GUNNISON CO.
7.5 MINUTE SERIES (TOPOGRAPHIC)
NE/4 ANTHRACITE 15' QUADRANGLE



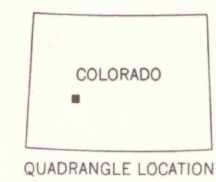
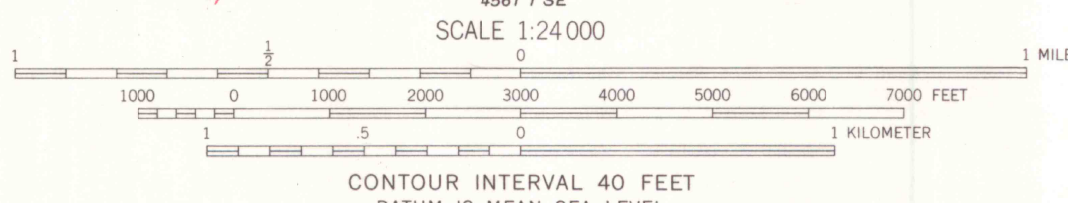
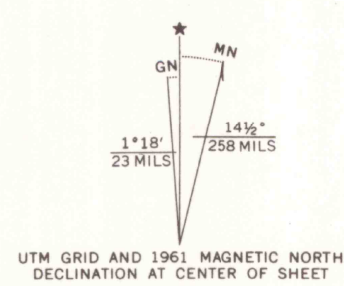
Mapped, edited, and published by the Geological Survey

Control by USGS and USC&GS

Topography by photogrammetric methods from aerial photographs taken 1958. Field checked 1961

Polyconic projection. 1927 North American datum
10,000-foot grid based on Colorado coordinate system, central zone
1000-meter Universal Transverse Mercator grid ticks, zone 13, shown in blue

Where omitted, land lines have not been established or are not shown because of insufficient data



ROAD CLASSIFICATION
Light duty ————— Unimproved dirt —————

OH-BE-JOYFUL, COLO.
NE/4 ANTHRACITE 15' QUADRANGLE
N3852.5—W10700/7.5

1961
AMS 4561 I NE—SERIES V877



LIBRARY USE ONLY
OFFICE COPY