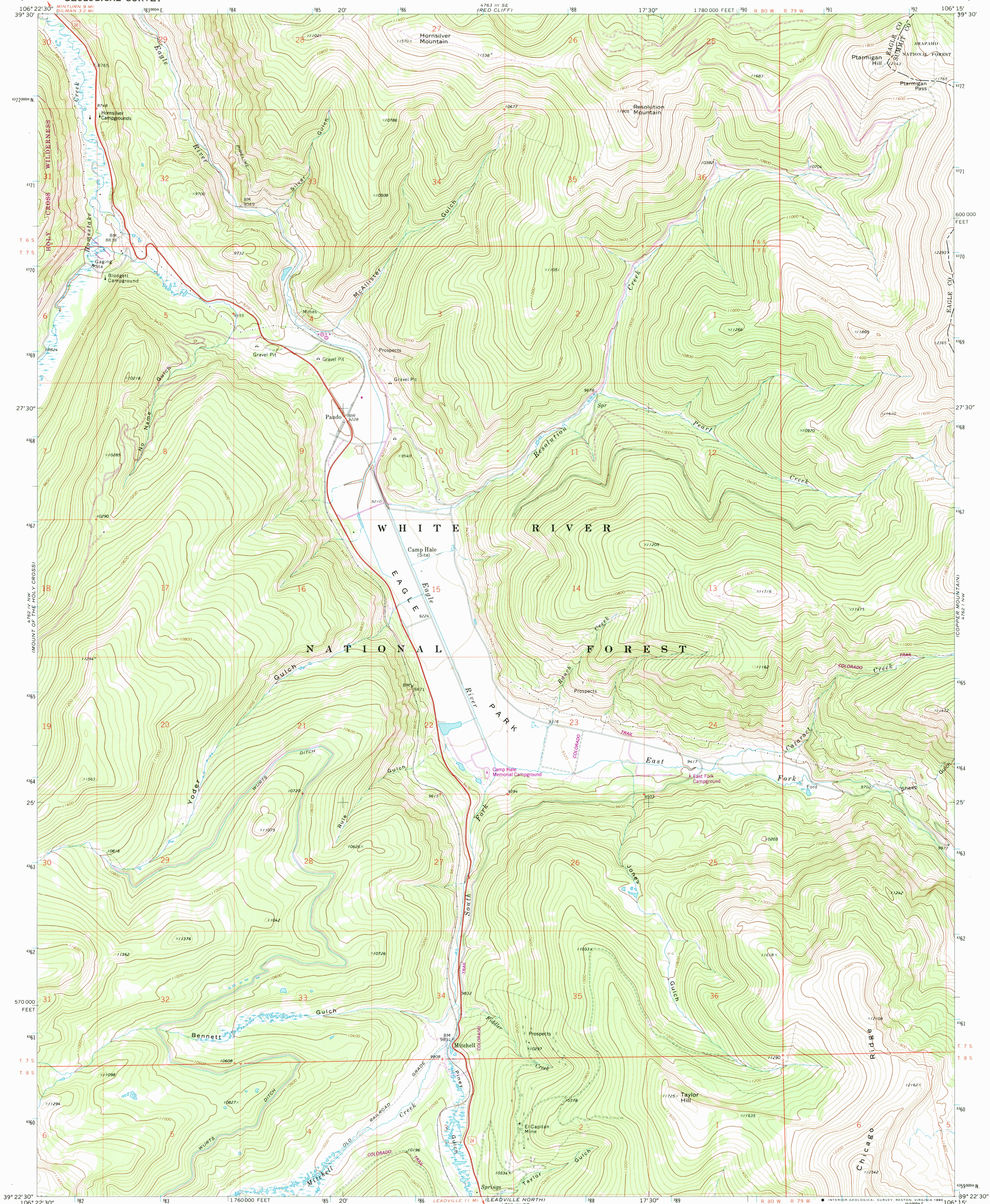


UNITED STATES  
DEPARTMENT OF THE INTERIOR  
GEOLOGICAL SURVEY

PANDO QUADRANGLE  
COLORADO  
7.5 MINUTE SERIES (TOPOGRAPHIC)



Mapped, edited, and published by the Geological Survey  
Control by USGS and NOS/NOAA

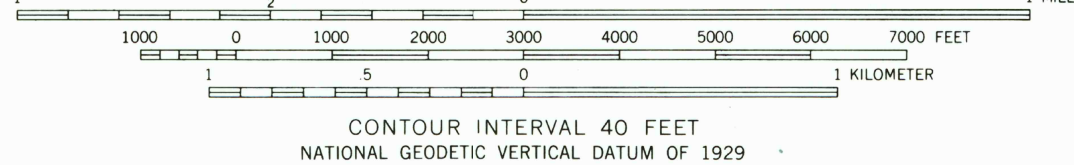
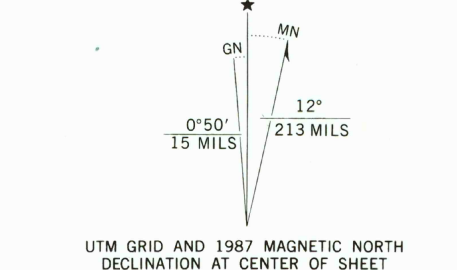
Topography by photogrammetric methods from aerial  
photographs taken 1968. Field checked 1970

Polyconic projection. 1927 North American Datum  
10,000-foot grid based on Colorado coordinate system,  
central zone  
1000-meter Universal Transverse Mercator grid ticks,  
zone 13, shown in blue

Where omitted, land lines have not been established  
or are not shown because of insufficient data

To place on the predicted North American Datum 1983  
move the projection lines 5 meters north and  
51 meters east as shown by dashed corner ticks

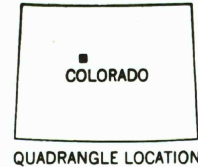
There may be private inholdings within the boundaries  
of the National or State reservations shown on this map



THIS MAP COMPLIES WITH NATIONAL MAP ACCURACY STANDARDS  
FOR SALE BY U. S. GEOLOGICAL SURVEY  
DENVER, COLORADO 80225, OR RESTON, VIRGINIA 22092  
A FOLDER DESCRIBING TOPOGRAPHIC MAPS AND SYMBOLS IS AVAILABLE ON REQUEST

Map photoinspected 1979  
No major culture or drainage changes observed

ROAD CLASSIFICATION  
Primary highway, hard surface  
Secondary highway, hard surface  
Unimproved road  
Interstate Route  
U. S. Route  
State Route



Revisions shown in purple compiled from aerial photographs  
taken 1983 and other source data. Partial field check  
by U. S. Forest Service. Map edited 1987

PANDO, COLO.  
39106-D3-TF-024  
PHOTOINSPECTED 1979  
1970  
PHOTOREVISED 1987  
DMA 4762 IV NE-SERIES V877

CLIMATE  
4762 IV SE  
VALLEY PASS  
MAR 15 1991  
REC'D FILE COPY